

Exhibit B: Plat of Subject

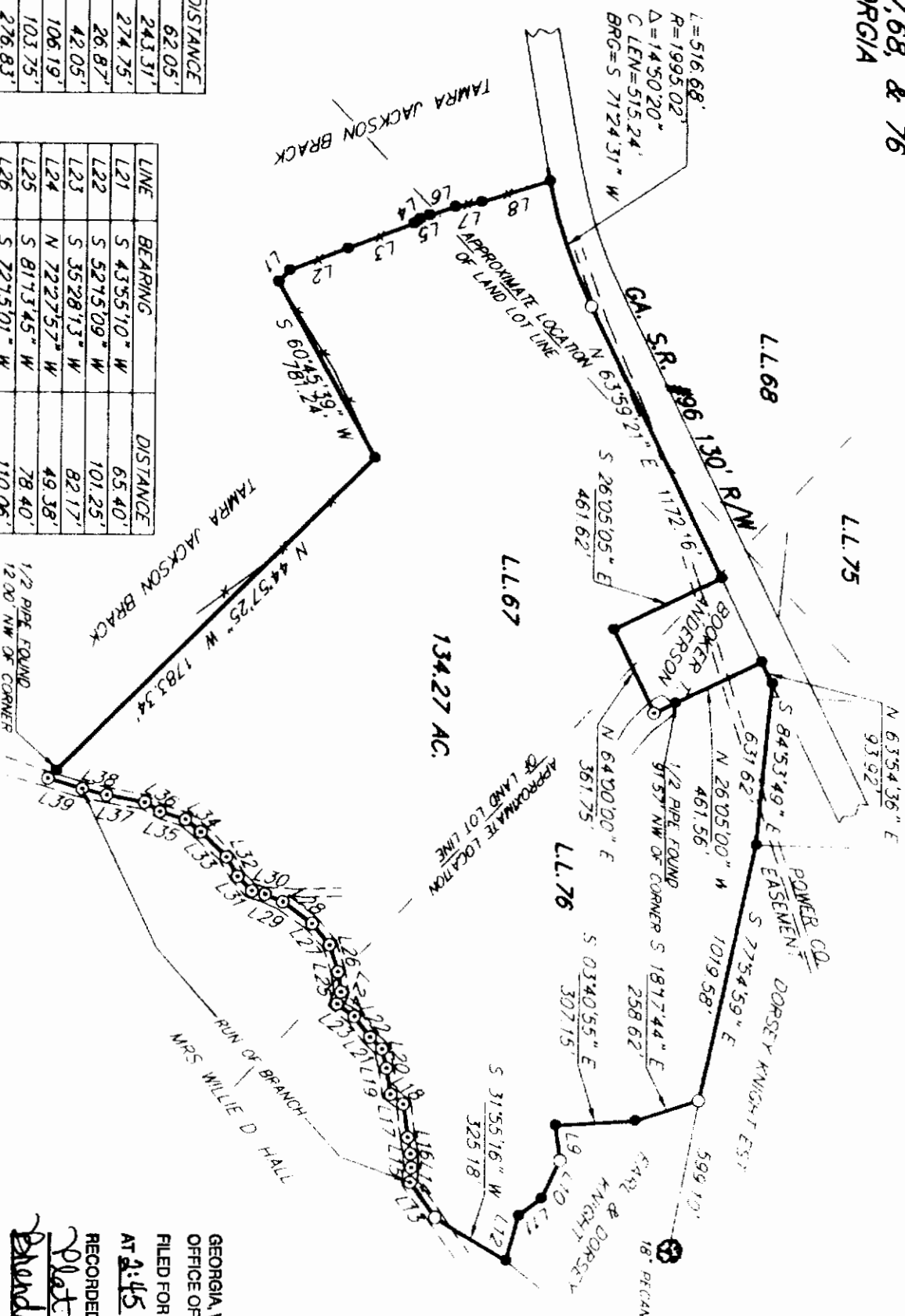
SURVEY FOR:
MICHAEL D. BELOTE
 LOCATED IN IN THE 352nd (HIGH HILL) G.M.D.
 BEING PART OF LAND LOTS 67,68, & 76
 WILKINSON COUNTY, GEORGIA
 SCALE: 1"=800'
 DATE: 07/30/10



LEGEND:
 ● REBAR FOUND
 ○ 1/2 PIPE SET
 ⊙ NO CORNER SET

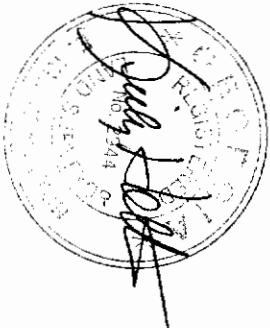
LINE	BEARING	DISTANCE
L1	N 46°25'04" W	62.05'
L2	N 21°53'36" W	243.31'
L3	N 21°25'07" W	274.75'
L4	N 38°44'13" W	26.87'
L5	N 22°34'53" W	42.05'
L6	N 18°47'20" W	106.19'
L7	N 11°09'38" W	103.75'
L8	N 17°29'26" W	276.83'
L9	N 82°29'07" E	138.72'
L10	S 64°42'45" E	163.81'
L11	S 37°39'56" E	111.98'
L12	S 75°10'42" E	186.99'
L13	S 53°49'35" W	167.36'
L14	N 85°38'39" W	57.38'
L15	S 87°7'06" W	53.41'
L16	S 79°29'03" W	65.04'
L17	S 82°08'34" W	131.77'
L18	S 36°52'03" W	62.77'
L19	S 80°23'43" W	103.34'
L20	S 76°28'16" W	77.34'

LINE	BEARING	DISTANCE
L21	S 43°55'10" W	65.40'
L22	S 52°15'09" W	101.25'
L23	S 35°28'13" W	82.17'
L24	N 72°27'57" W	49.38'
L25	S 81°13'45" W	78.40'
L26	S 72°15'01" W	110.06'
L27	S 49°46'07" W	107.78'
L28	S 35°55'24" W	141.35'
L29	S 22°31'23" W	75.23'
L30	S 13°37'06" W	53.01'
L31	S 45°12'28" W	78.87'
L32	S 59°34'43" W	87.84'
L33	S 43°51'17" W	140.03'
L34	S 38°44'10" W	76.41'
L35	S 16°37'37" W	104.83'
L36	S 30°58'12" W	69.38'
L37	S 10°12'49" W	151.17'
L38	S 13°31'42" W	99.76'
L39	S 16°25'17" W	139.34'



I CERTIFY THAT IN MY OPINION THE PROVISIONS IN G.S. GA SECTION 15-66-67(d) DOES NOT REQUIRE APPROVAL OF THIS PLAT BY THE PLANNING COMMISSION

I CERTIFY THIS PLAT TO BE A TRUE AND CORRECT REPRESENTATION OF THE LAND PLATTED AND THAT IT CONFORMS TO THE MINIMUM STANDARDS AND REQUIREMENTS OF LAW, GEORGIA LAWS 1978 AND IS SUITABLE FOR RECORDING.



GEORGIA WILKINSON COUNTY
 OFFICE OF CLERK OF SUPERIOR COURT
 FILED FOR RECORD Aug 5 2010
 AT 2:45 O'CLOCK P M
 RECORDED Aug 5 2010 IN
 Plat 19 BOOK 19 PAGE 695B
Shanda M. Stone DEPUTY CLERK

STATEWIDE SURVEYING COMPANY
 621 E THEL STREET
 DORSEY, GEORGIA 31533
 706-244-1927

ERROR OF CLOSURE: GREATER THAN 1" IN 10,000
 ANGULAR ERROR: LESS THAN 6" PER ANGLE
 ADJUSTED CLOSURE: 1" = 100,000'
 COMPASS RULE ADJUSTMENT
 FIELD SURVEYOR: ADAM EVANS
 EQUIP. USED: TOPCON GTS 3B TOTAL STATION - TRIMBLE GPS
 PLAT BY: LARRY EVANS
 COMP FILE: WDELOTE-073010