

# Rutledge Mini Farm

0 Greenville Highway, Luverne, Alabama 36049

---

Kent McNaughton  
334-437-1774  
kent@saundersrealestate.com

## PROPERTY OVERVIEW



### Sale Price

\$47,786

### Offering Summary

Acreage:	6.38 Acres
Price / Acre:	\$7,490
State:	Alabama
City:	Luverne
County:	Crenshaw
Property Type:	Acreage and Estates, Farms and Cropland, Ranches and Pastureland

### Property Overview

This mini farm is located outside of Rutledge in Crenshaw County, Alabama. It offers the perfect setting for country living with plenty of options for use and enjoyment. The open land is well-suited for a few cows, goats, or other livestock, and the potential to be set up for boarding horses. With multiple potential homesites, you can choose the ideal spot for your residence, barn, and other improvements.

Located a short distance from Luverne and only 18 miles from Greenville, this tract combines quiet rural living with easy access to shopping, schools, and town conveniences.

Whether you are looking for a homesite or hobby farm this acreage offers excellent potential in a great location.

## PROPERTY DESCRIPTION



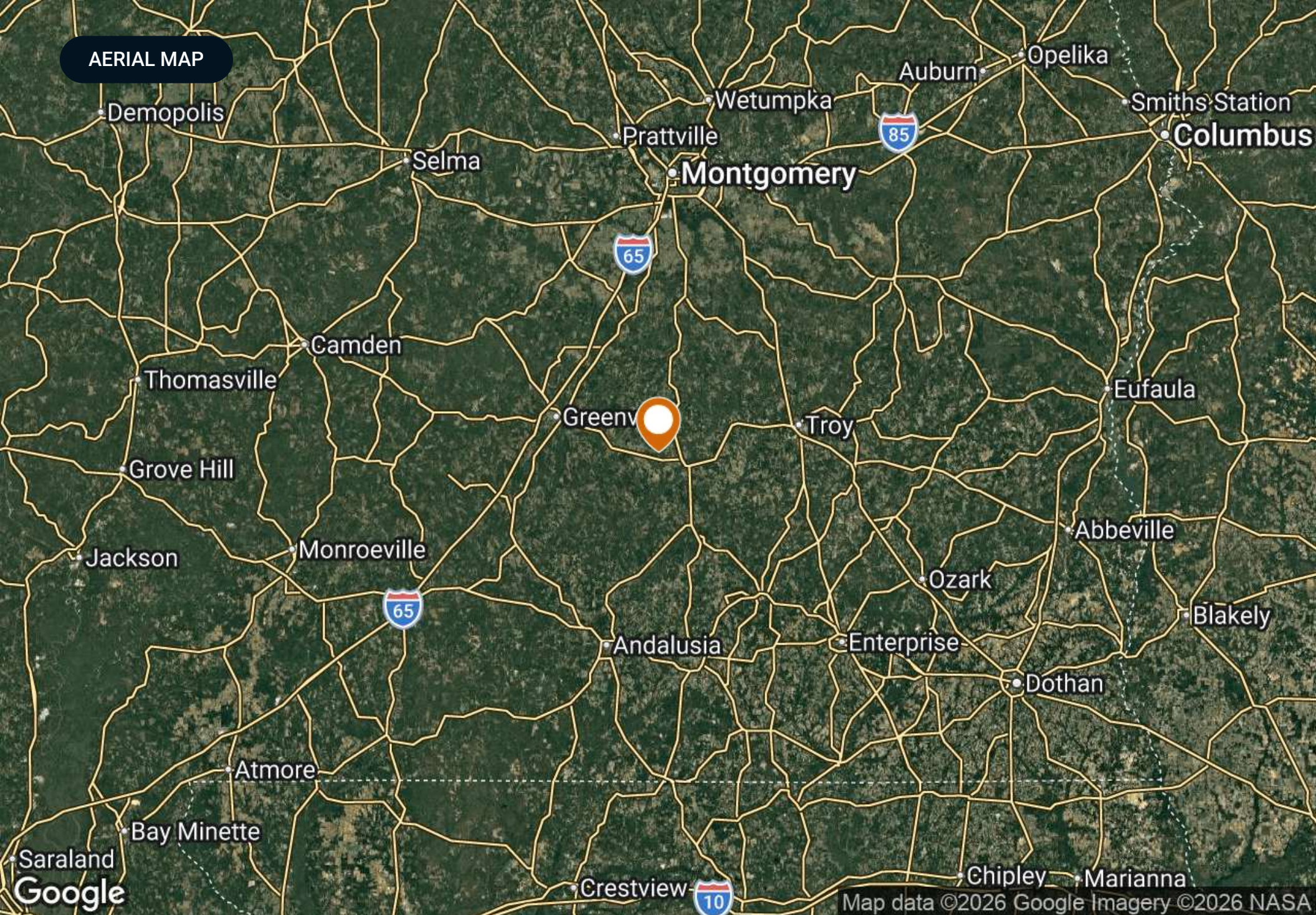
## Location Description

6.38-acre parcel along Greenville Highway (AL State Route 10) in Luverne, Alabama, within Crenshaw County.

## Property Highlights

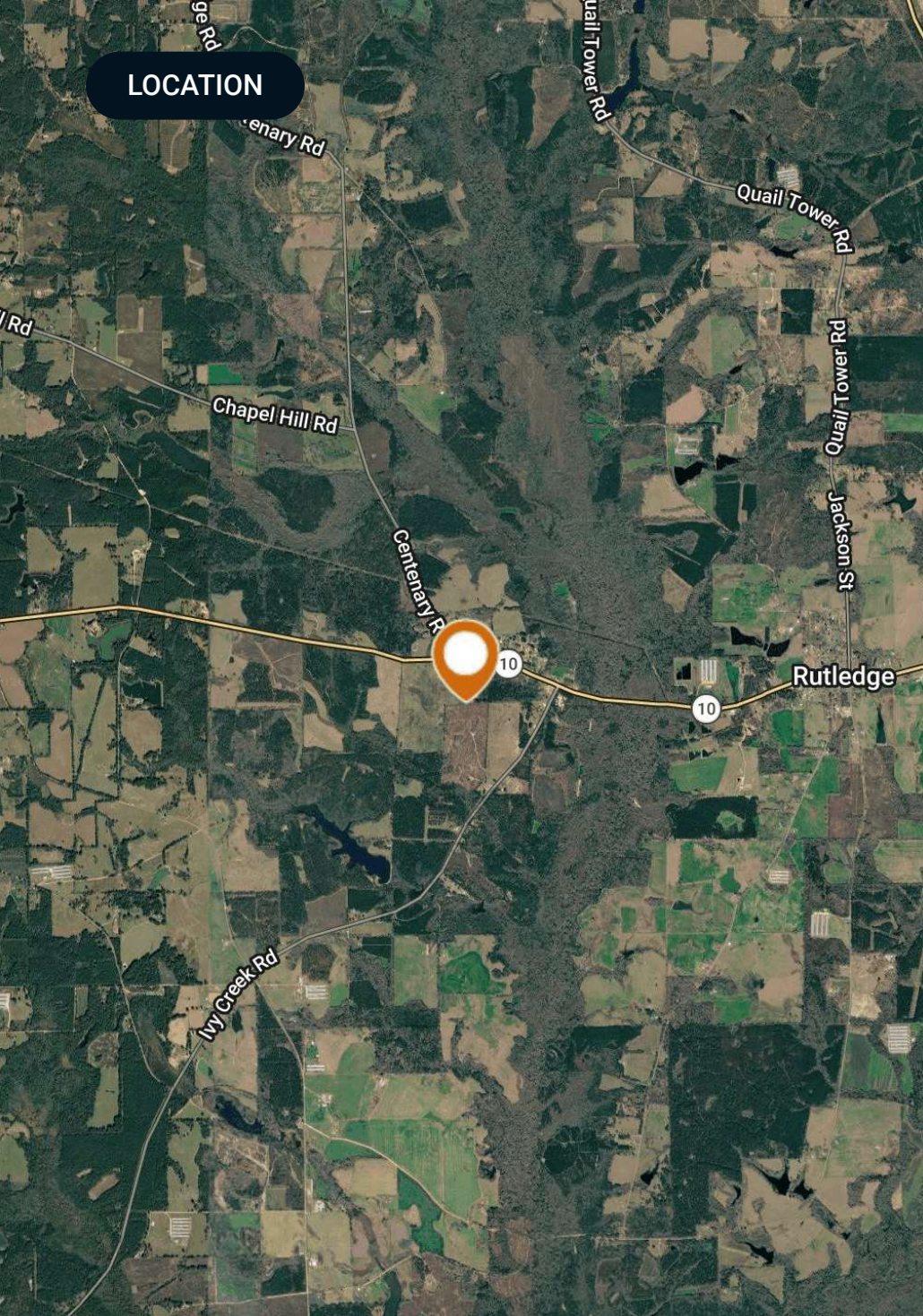
- Located in the Luverne area
- Convenient access to Greenville Highway
- Potential for development
- Close proximity to amenities
- Flexible usage options

AERIAL MAP



Google

Map data ©2026 Google Imagery ©2026 NASA



## Location & Driving Directions

- Parcel: Portion of 24 11 08 27 0 000 021.00 0
- GPS: 31.7316612, -86.3451516
- Driving Directions: Contact advisor
- Showing Instructions: Contact advisor

# PROPERTY OUTLINE



Rutledge Mini Farm

■ Polygon



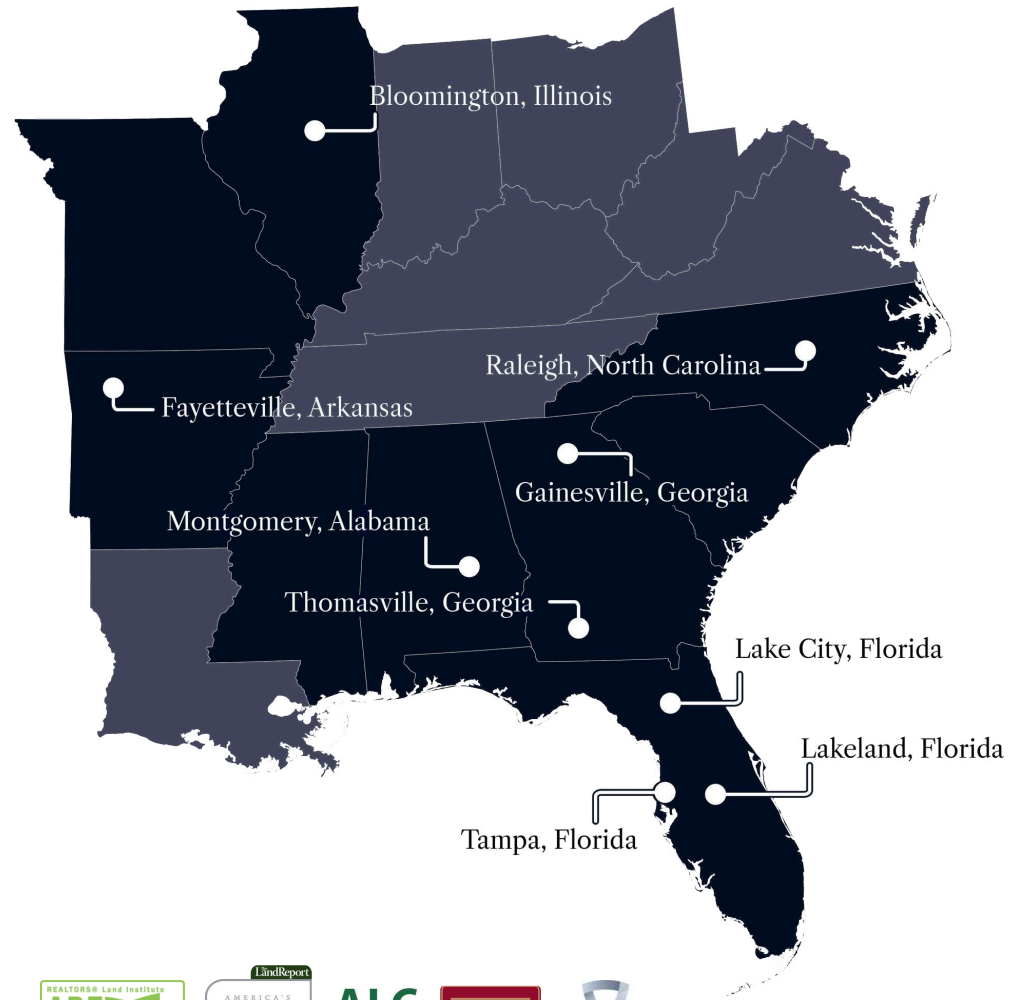
©2026 Saunders Real Estate® Any information displayed should be verified and is not guaranteed to be accurate by Saunders Real Estate. You may not copy or use this material without written consent from Saunders Real Estate.

ADDITIONAL PHOTOS





At Saunders Real Estate, we deliver full-service real estate solutions, built on more than 30 years of trusted experience. Our dedicated teams offer tailored guidance backed by deep regional insight and a proven track record. We believe that successful outcomes start with strong relationships built on trust and a shared commitment to your goals.



877-518-5263 • [info@saundersrealestate.com](mailto:info@saundersrealestate.com)



©2026 Saunders Real Estate, LLC. All rights reserved. The information contained in this communication is strictly confidential. This information has been obtained from sources believed to be reliable but has not been verified. NO WARRANTY OR REPRESENTATION, EXPRESS OR IMPLIED, IS MADE AS TO THE CONDITION OF THE PROPERTY (OR PROPERTIES) REFERENCED HEREIN OR AS TO THE ACCURACY OR COMPLETENESS OF THE INFORMATION CONTAINED HEREIN, AND SAME IS SUBMITTED SUBJECT TO ERRORS, OMISSIONS, CHANGE OF PRICE, RENTAL OR OTHER CONDITIONS, WITHDRAWAL WITHOUT NOTICE, AND TO ANY SPECIAL LISTING CONDITIONS IMPOSED BY THE PROPERTY OWNER(S). ANY PROJECTIONS, OPINIONS OR ESTIMATES ARE SUBJECT TO UNCERTAINTY AND DO NOT SIGNIFY CURRENT OR FUTURE PROPERTY PERFORMANCE.