

0.2 - 4.23 Acre Outparcels Available!

54 - 66 Highway 22 W and 261 Blandy Way
Milledgeville, GA 31061



Summary

Area Info

Aerial

Site Map



SALE PRICE: \$200,000.00/Acre

Trip Wilhoit, CCIM, ALC
478-746-9421 Office
478-960-4080 Cell
trip@fickling.com
www.georgiacommercialrealestate.net

Patty Burns, CCIM, ALC
478-746-9421 Office
478-951-5100 Cell
patty@fickling.com

Jonathan Schuemann
478-746-9421 Office
561-676-4633 Cell
jonathan@fickling.com

Jim Fain
478-997-6400 Office
478-363-2145 Cell
jfain@fickling.com



577 Mulberry St, Suite 1100
Macon, GA 31201
478.746.9421 Office
<https://commercial.fickling.com>

This information is from resources deemed to be reliable and is subject to change without notice. No warranties or guarantees for accuracy are made by Fickling and Company.

0.2 - 4.23 Acre Outparcels Available!
54 - 66 Highway 22 W and 261 Blandy Way
Milledgeville, GA 31061



Summary

Area Info

Aerial

Site Map

PROPERTY INFORMATION

PROPERTY

Property Addresses: 54, 56, 58, 64, 66 Highway 22 W, & 261 Blandy Way Milledgeville, GA 31061

County: Baldwin

Utilities: All available

Topography: Level

Traffic Count: Highway 22 W - 9,540 VPD
 Roberson Mill Road - 21,900 VPD

SITE

Site Sizes: 0.2 - 4.23 Acres

Parcel IDs: 068 001T, 068 001S, 068 001Q, 068 001W, 068 001C, 068 001R

Zoning: Community Commercial

Demographics 2025	1 Mile	3 Miles	5 Miles
Population	458	14,527	26,868
Avg HH Income	\$109,932	\$68,549	\$91,469
Median Age	39.5	29.6	33.8

SALE PRICE: \$200,000.00/Acre

Trip Wilhoit, CCIM, ALC
 478-746-9421 Office
 478-960-4080 Cell
 trip@fickling.com
 www.georgiacommercialrealestate.net

Patty Burns, CCIM, ALC
 478-746-9421 Office
 478-951-5100 Cell
 patty@fickling.com

Jonathan Schuemann
 478-746-9421 Office
 561-676-4633 Cell
 jonathan@fickling.com

Jim Fain
 478-997-6400 Office
 478-363-2145 Cell
 jfain@fickling.com



577 Mulberry St, Suite 1100
 Macon, GA 31201
 478.746.9421 Office
 https://commercial.fickling.com

This information is from resources deemed to be reliable and is subject to change without notice. No warranties or guarantees for accuracy are made by Fickling and Company.

0.2 - 4.23 Acre Outparcels Available!

54 - 66 Highway 22 W and 261 Blandy Way
Milledgeville, GA 31061



Summary

Area Info

Aerial

Site Map

AREA INFORMATION

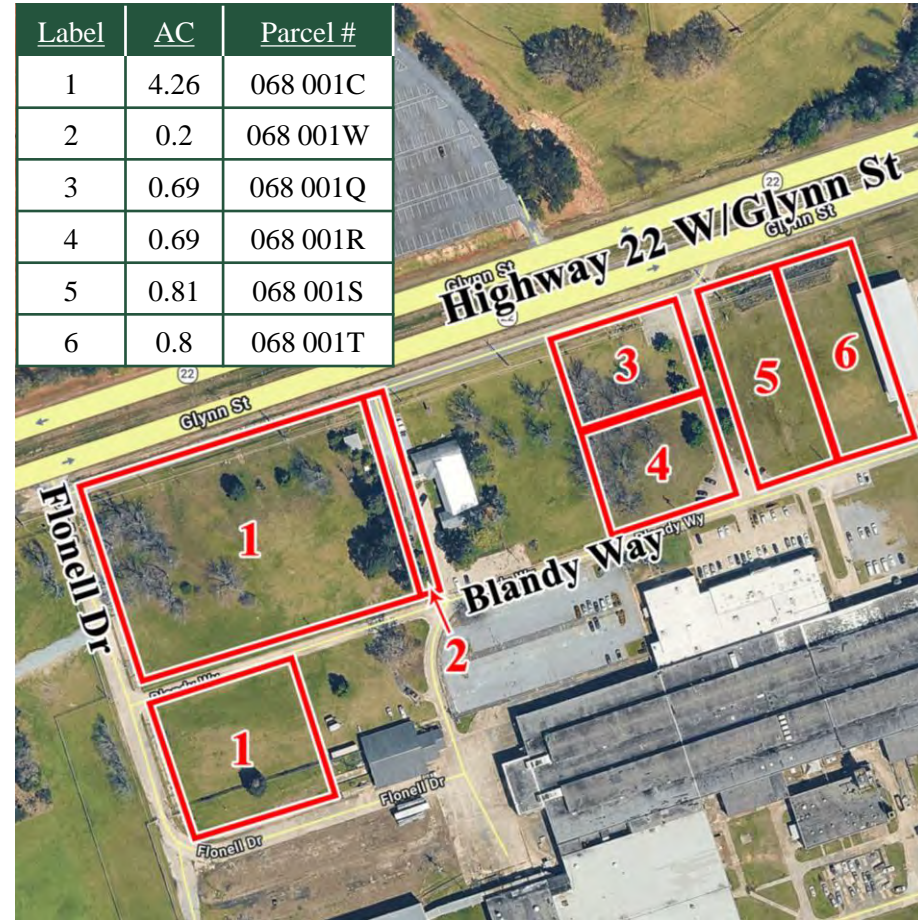
PROPERTY

Prime outparcel opportunity along Highway 22 offering excellent visibility, access, and flexibility for a variety of retail and commercial users. Positioned at the entrance to an existing development with internal connectivity, these sites are ideal for national and regional tenants seeking presence in a growing trade area.

PROPERTY HIGHLIGHTS

- Prime frontage along Highway 22 with strong visibility
- Multiple outparcels available with flexible sizing options
- Frontage and rear access via Blandy Way for easy circulation
- Located at the entrance to an established development
- High daily traffic counts along a busy commuter connector
- Flat, developable sites - minimal site work required
- All utilities available
- Shared access and cross-circulation with existing improvements
- Suitable for drive-thru and pad development
- Ability to sell or ground lease individually

Label	AC	Parcel #
1	4.26	068 001C
2	0.2	068 001W
3	0.69	068 001Q
4	0.69	068 001R
5	0.81	068 001S
6	0.8	068 001T



Trip Wilhoit, CCIM, ALC
478-746-9421 Office
478-960-4080 Cell
trip@fickling.com

Patty Burns, CCIM, ALC
478-746-9421 Office
478-951-5100 Cell
patty@fickling.com

Jonathan Schuemann
478-746-9421 Office
561-676-4633 Cell
jonathan@fickling.com

Jim Fain
478-997-6400 Office
478-363-2145 Cell
jfain@fickling.com



577 Mulberry St, Suite 1100
Macon, GA 31201
478.746.9421 Office
<https://commercial.fickling.com>

0.2 - 4.23 Acre Outparcels Available!

54 - 66 Highway 22 W and 261 Blandy Way
Milledgeville, GA 31061



Summary

Area Info

Aerial

Site Map

AREA INFORMATION

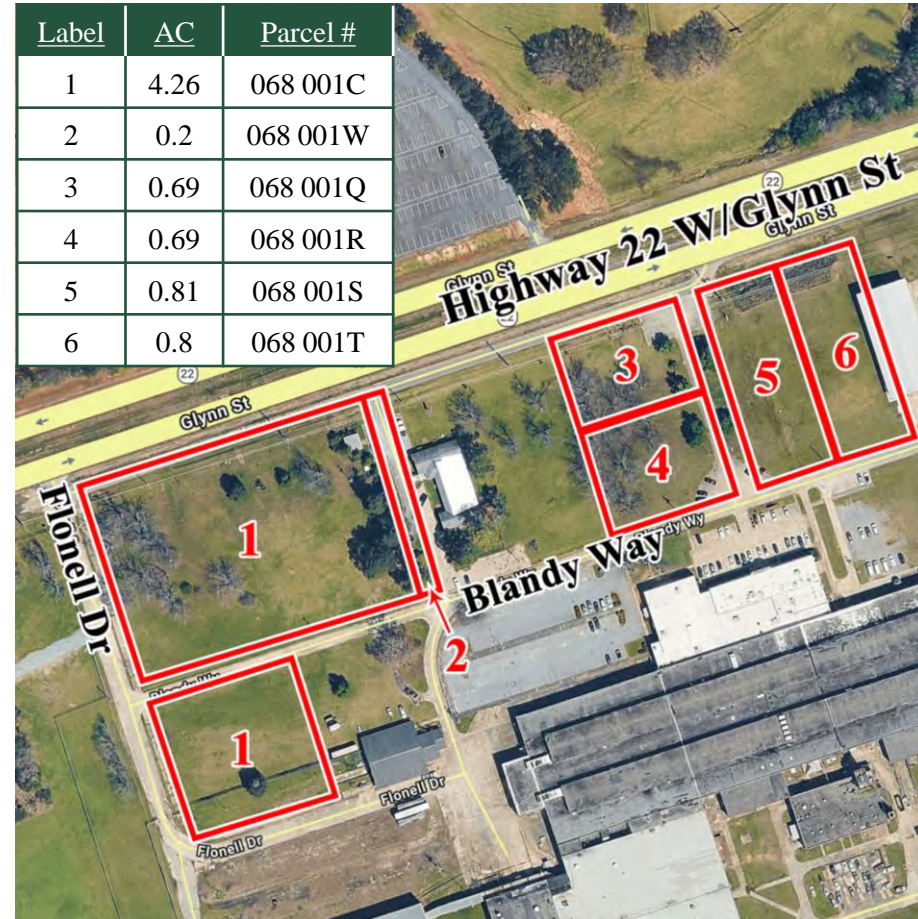
LOCATION HIGHLIGHTS

- Located in Milledgeville, GA- retail hub for Baldwin County
- Close proximity to Georgia College & State University
- Near major employment centers and industrial uses
- Surrounded by growing residential development
- Strong mix of local and regional traffic drivers
- Limited competing new retail development in the immediate area

IDEAL USES

- Quick Service Restaurants (QSR)
- Coffee / Drive-Thru Concepts
- Urgent Care / Medical
- Banks / Financial Institutions
- Auto Service / Oil Change
- Neighborhood Retail / Service

Label	AC	Parcel #
1	4.26	068 001C
2	0.2	
3	0.69	068 001Q
4	0.69	068 001R
5	0.81	068 001S
6	0.8	068 001T



Trip Wilhoit, CCIM, ALC
478-746-9421 Office
478-960-4080 Cell
trip@fickling.com

Patty Burns, CCIM, ALC
478-746-9421 Office
478-951-5100 Cell
patty@fickling.com

Jonathan Schuemann
478-746-9421 Office
561-676-4633 Cell
jonathan@fickling.com

Jim Fain
478-997-6400 Office
478-363-2145 Cell
jfain@fickling.com



577 Mulberry St, Suite 1100
Macon, GA 31201
478.746.9421 Office
<https://commercial.fickling.com>

0.2 - 4.23 Acre Outparcels Available!

54 - 66 Highway 22 W and 261 Blandy Way
Milledgeville, GA 31061



Summary

Area Info

Aerial

Site Map



SUBJECT PROPERTIES

Trip Wilhoit, CCIM, ALC
478-746-9421 Office
478-960-4080 Cell
trip@fickling.com
www.georgiacommercialrealestate.net

Patty Burns, CCIM, ALC
478-746-9421 Office
478-951-5100 Cell
patty@fickling.com

Jonathan Schuemann
478-746-9421 Office
561-676-4633 Cell
jonathan@fickling.com

Jim Fain
478-997-6400 Office
478-363-2145 Cell
jfain@fickling.com



577 Mulberry St, Suite 1100
Macon, GA 31201
478.746.9421 Office
<https://commercial.fickling.com>

0.2 - 4.23 Acre Outparcels Available!

54 - 66 Highway 22 W and 261 Blandy Way
Milledgeville, GA 31061

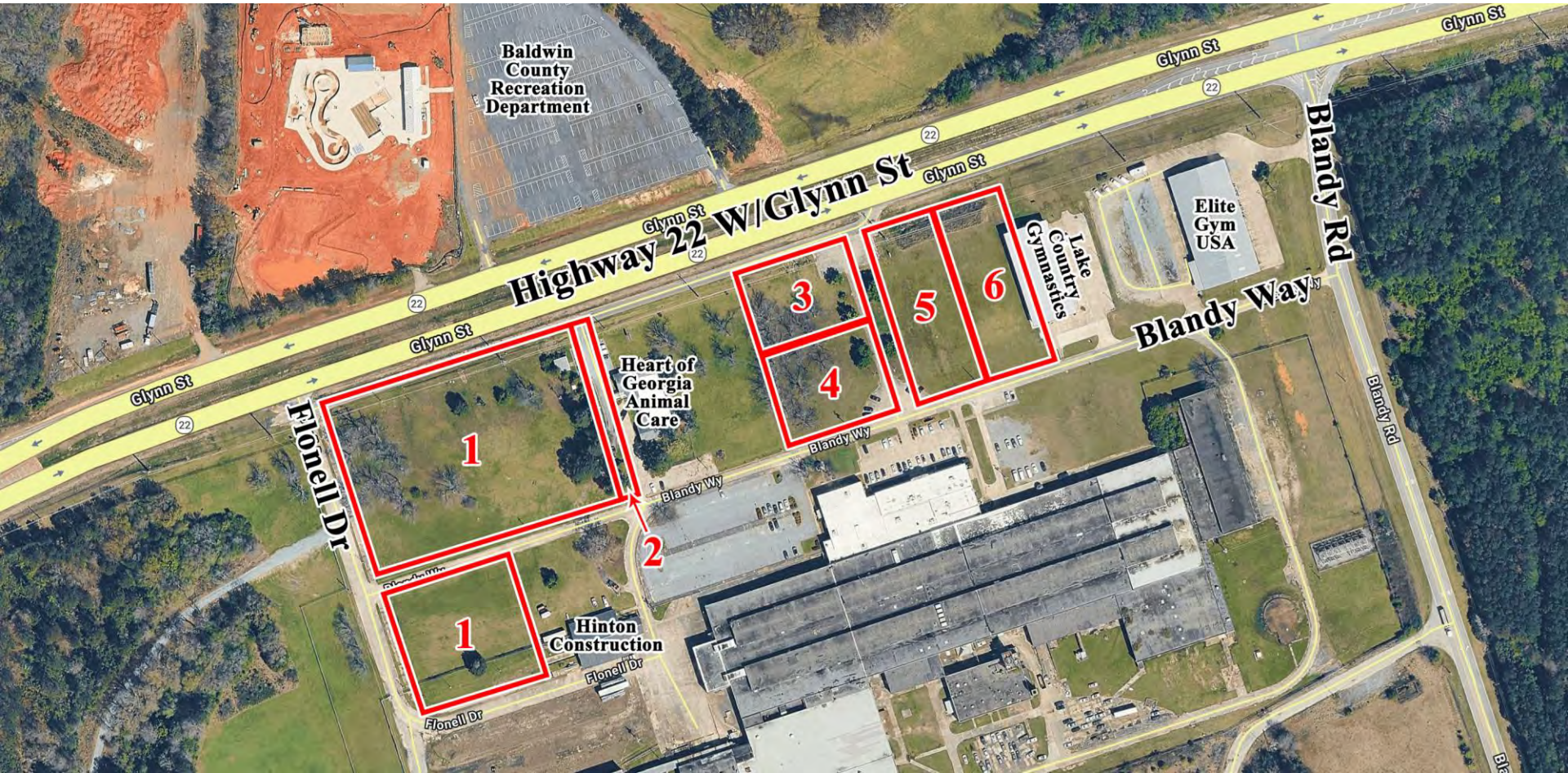


Summary

Area Info

Aerial

Site Map



Trip Wilhoit, CCIM, ALC
478-746-9421 Office
478-960-4080 Cell
trip@fickling.com
www.georgiacommercialrealestate.net

Patty Burns, CCIM, ALC
478-746-9421 Office
478-951-5100 Cell
patty@fickling.com

Jonathan Schuemann
478-746-9421 Office
561-676-4633 Cell
jonathan@fickling.com

Jim Fain
478-997-6400 Office
478-363-2145 Cell
jfain@fickling.com



577 Mulberry St, Suite 1100
Macon, GA 31201
478.746.9421 Office
<https://commercial.fickling.com>