



# The Barrett Place

County Road 56, Marbury, Alabama 36051

---

Eric Leisy, ALC, GRI  
334-657-6707  
ericleisy@saundersrealestate.com

Fletcher Majors, ALC, JD  
334-328-9278  
fletcher@saundersrealestate.com

## PROPERTY OVERVIEW



### Sale Price

\$295,000

### Offering Summary

Acreage:	87 ± Acres
Price / Acre:	\$3,391
State:	Alabama
City:	Marbury
County:	Autauga
Property Type:	Hunting and Recreational Land

### Property Overview

What if your “getaway” didn’t come with rules, restrictions, or someone telling you what you can build?

Picture this: You turn off the highway, roll a few miles into the quiet, and suddenly everything slows down. The noise fades. The air feels different. And just 2 miles east of Marbury, you find a piece of land that doesn’t just sit there...it pulls you in.

This 87-acre property in Autauga County gives you something rare: space, privacy, and real freedom. Walk it once, and you’ll see what makes it special.

There’s a natural rise... a hill that opens up to a wide, breathtaking view. The kind of place where you can picture a cabin catching the morning light. Or a porch where evenings stretch a little longer because you don’t want to go inside. And here’s the part most properties can’t offer anymore: No HOA. No restrictions. No one is telling you what this land has to be. Want a cabin? You can build it. Prefer a camper setup for weekends? Go for it. Dreaming of a full-time home tucked away in the trees? It’s yours to create. This is your land, your vision, your rules. There are multiple spots ready for a homesite, a weekend cabin, or even a full-time residence.



## Property Overview Continued

And then there's the land itself. If you hunt, you'll understand right away. The terrain, the cover, the movement... it all lines up. This is the kind of property people hold onto for generations because the hunting is that good. But here's what really makes it work. You feel like you're miles away from everything...yet you're only minutes from it. About 5-10 minutes to I-65 for an easy commute, a short drive to Lake Jordan and the Coosa River for fishing and water days, and close enough to grocery stores, schools, and everyday needs. So you're not choosing between convenience and peace; you get both.

This isn't just land. It's a place where weekends turn into traditions... and where you finally get to build life your way... without compromise.

If you've been waiting for a property that checks the boxes and feels right when you walk it... this might be it.

Come see it for yourself. Take in the view. Picture what you'd build if no one could tell you no. Reach out today to schedule a private showing or get the details: Please call me, Eric Leisy, at 334-657-6707.

Here's to your legacy — and every acre of it.

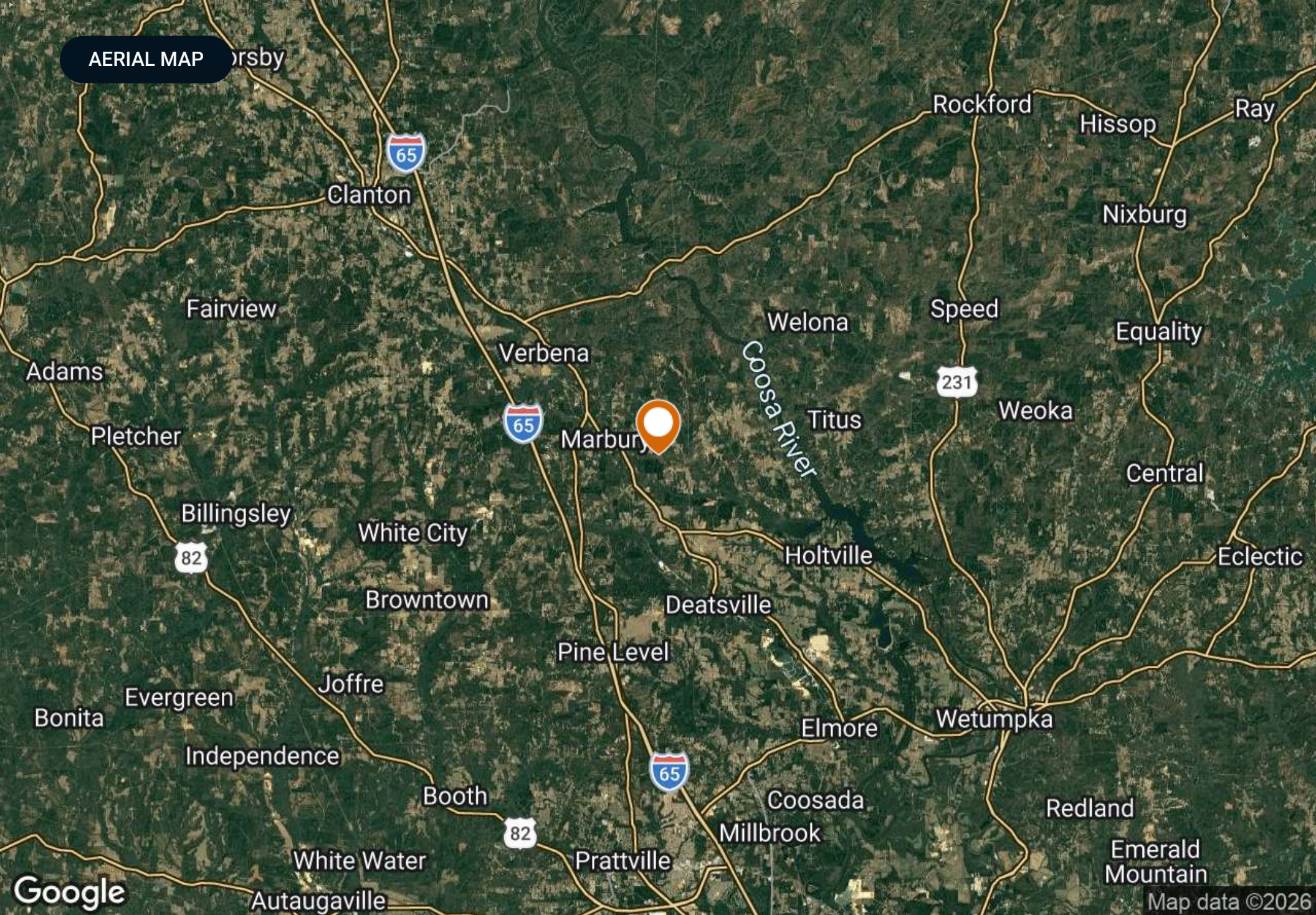
## SPECIFICATIONS & FEATURES



## Specifications & Features

<b>Taxes &amp; Tax Year:</b>	\$121.56 for 2025
<b>Road Frontage:</b>	Road Frontage on Autauga County Road 56
<b>Nearest Point of Interest:</b>	Lake Jordan Coosa River Marbury, Alabama
<b>Current Use:</b>	Outstanding hunting/recreational property with a couple of beautiful home or cabin sites
<b>Land Cover:</b>	A mix of mature hardwoods and pines, food plots, and younger natural regeneration

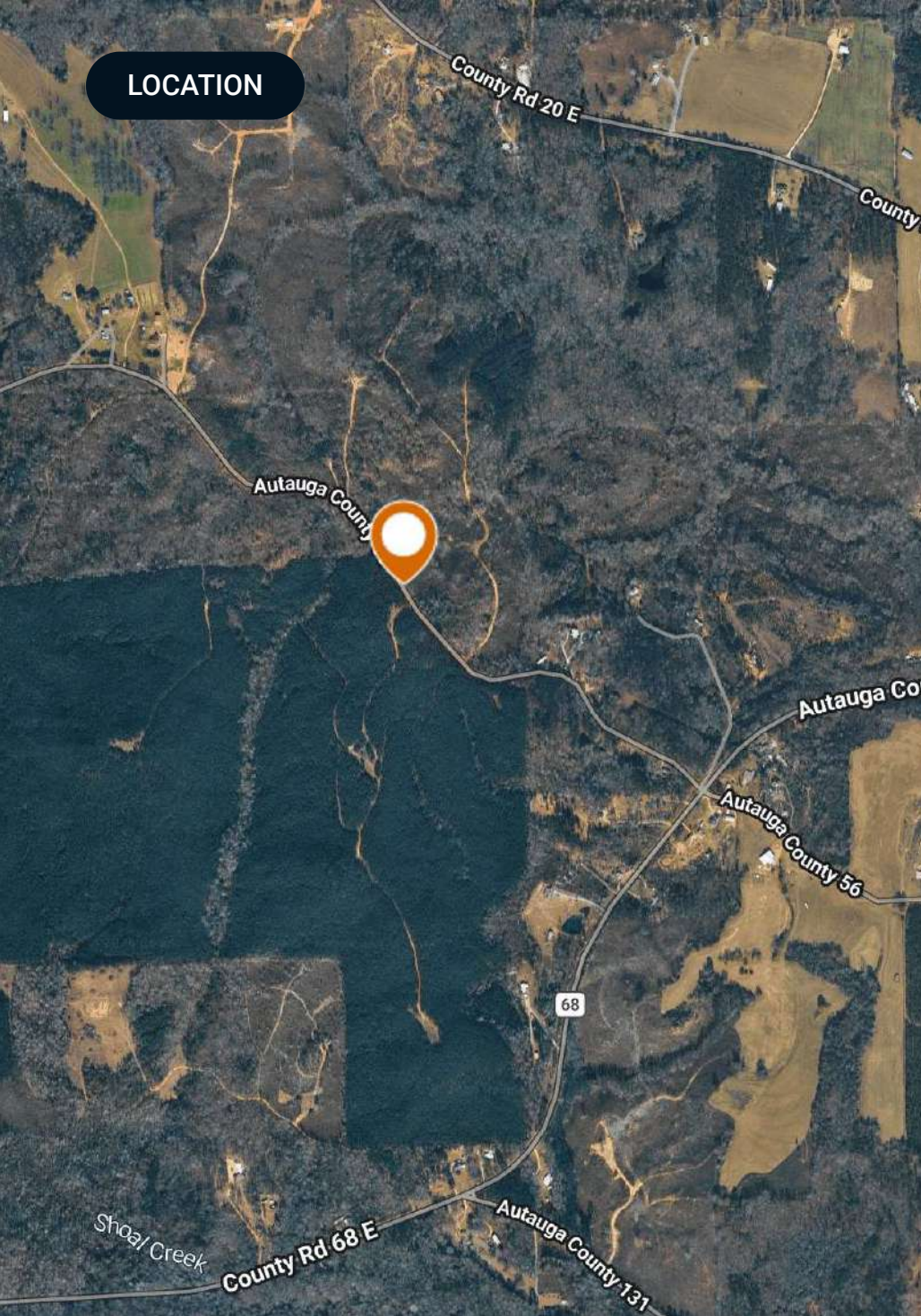
AERIAL MAP



Google

Map data ©2026

## LOCATION



## Location & Driving Directions

Parcel: 0107260000005000  
0106230000012000

GPS: 32.6901911, -86.4354897

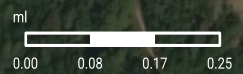
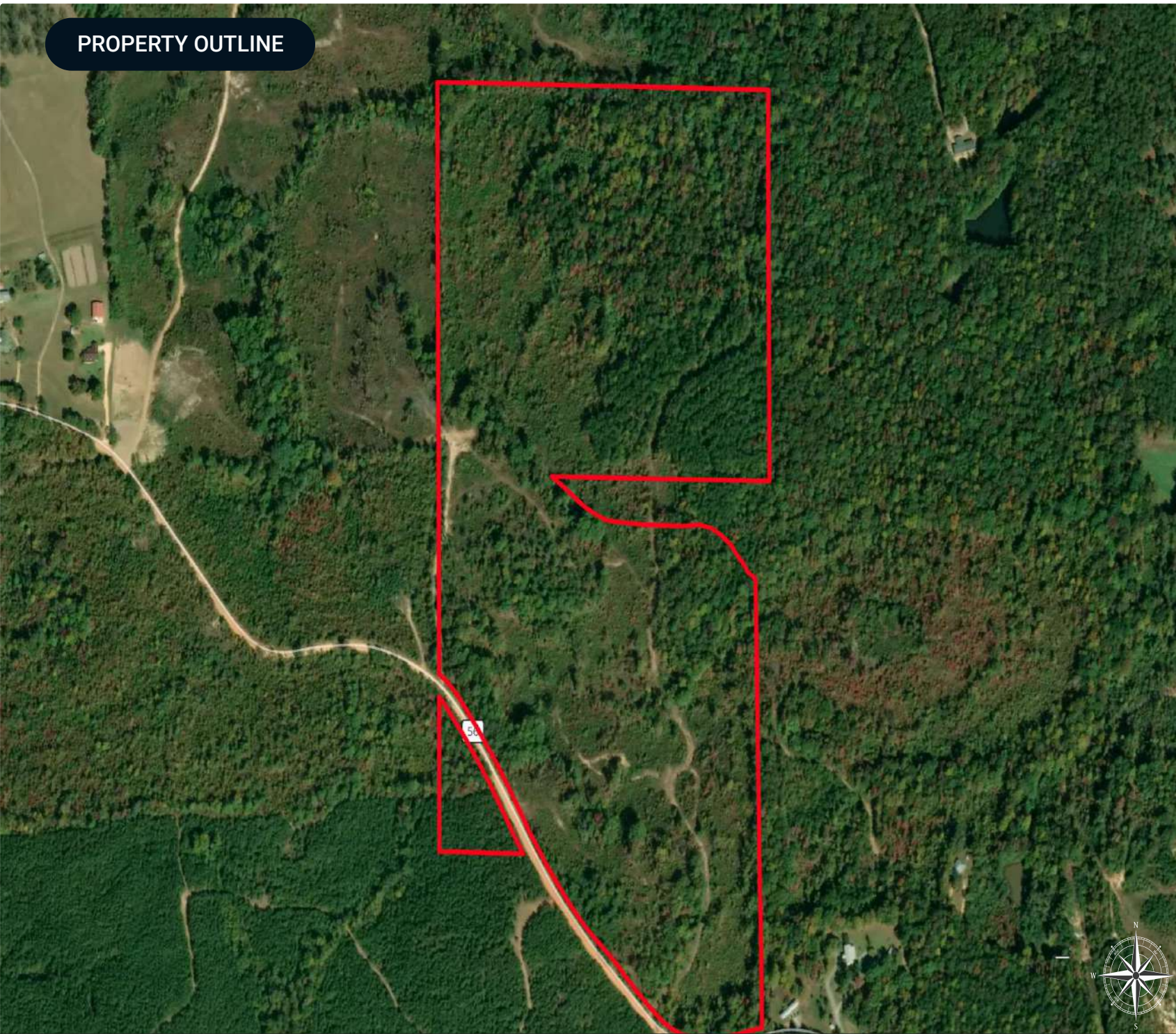
Driving Directions: Please call Eric Leisy for directions

Showing Instructions: Please call Eric Leisy for showing instructions.

# PROPERTY OUTLINE

## Barrett 87

- Polygon
- Census Roadways TIGER
- County Roads
- Interstates
- State Roads
- Highways



ADDITIONAL PHOTOS



ADDITIONAL PHOTOS



ADDITIONAL PHOTOS



## ADVISOR BIOGRAPHY



### Eric Leisy, ALC, GRI

Senior Advisor

[ericleisy@saundersrealestate.com](mailto:ericleisy@saundersrealestate.com)

Cell: **334-657-6707**

## Professional Background

Eric Leisy, ALC, GRI is a Senior Advisor at Saunders Real Estate, helping clients navigate the complex process of buying and selling land. With Eric, clients receive trusted guidance, market expertise, and proven results throughout every stage of a land transaction.

With more than 30 years of experience, including land brokerage, commercial lending, appraisal, development, and investment analysis, Eric brings a comprehensive perspective to each property. He brings a strong understanding of the factors that influence land value and potential, such as timber characteristics, soil types, wildlife habitat, agricultural use, access, and overall feasibility, helping clients better understand their options and make confident decisions. Eric's experience developing lifestyle centers, power centers, and retail sites like Walgreens also provides insight into commercial and residential development potential.

Eric is a graduate of the University of Alabama with a degree in Corporate Finance and Investments, giving him a strong foundation in financial analysis and investment evaluation. He has earned recognition as a seven-time national APEX Award recipient through the REALTORS® Land Institute (RLI) and holds the Accredited Land Consultant (ALC) and Graduate, REALTOR® Institute (GRI) designations. These honors reflect his ability to close complex transactions and deliver measurable results. In 2025, he was named Land Realtor of the Year for the RLI Alabama Chapter.

He has served in national and state leadership roles with the REALTORS® Land Institute and remains active with the Alabama Forestry Association, Alabama Wildlife Federation, and National Association of REALTORS®. These networks provide access to potential buyers, off-market opportunities, and market insights that help his clients.

Eric works with families of legacy farms and estates, heirs managing inherited property, farmers and timber investors, developers and planners, conservation-focused landowners, and recreational property buyers and sellers. Through acquisitions or dispositions, he combines financial insight, transactional expertise, and practical experience to guide clients through each decision, helping them achieve their goals.

Eric has been married to Melissa for 40 years. His hobbies, which include vegetable gardening, fly fishing, and turkey hunting, keep him outdoors and closely connected to the land. Playing rugby at the University of Alabama and later coaching youth sports taught him teamwork, discipline, and strategy: skills he applies to complex negotiations and multi-party transactions to reach successful outcomes.



### Fletcher Majors, ALC, JD

Senior Advisor

fletcher@saundersrealestate.com

Direct: **877-518-5263 x388** | Cell: **334-328-9278**

## Professional Background

Fletcher Majors, ALC, JD is a Senior Advisor at Saunders Real Estate.

For over 50 years, Fletcher served as the Founder, President, and Owner of Great Southern Land, where he built a solid reputation for providing personalized assistance and in-depth professional real estate services across the Alabama land market.

A licensed real estate broker since 1974, Fletcher holds a Bachelor of Civil Engineering Degree from Auburn University and a Juris Doctor Degree from Jones Law Institute. He is a non-practicing member of the Alabama Bar. While his real estate experience began in timberland sales, Fletcher later extended to transitional land sales as well. He acts as a consultant to attorneys and CPAs with respect to real estate values.

Fletcher also provides specialized advisory services in the division of jointly owned property, in which he works closely with landowners, attorneys, CPAs, and courts of equity to equitably partition land into individually owned parcels. This work requires a comprehensive understanding of physical land characteristics, title and legal constraints, tax considerations, and the personal priorities of each owner. These assignments reflect Fletcher's ability to guide complex land decisions with both technical expertise and practical insight.

Fletcher holds the Accredited Land Consultant (ALC) designation of the REALTORS® Land Institute (RLI) and is a nationally known instructor who has taught in 24 states, Canada, and Washington, DC. Fletcher is a senior instructor for RLI, an affiliate of the National Association of REALTORS® (NAR). He teaches the two-day RLI course, Land 101, as well as two ALC courses: "Land Investment Analysis" and "Transitional Land". The Land Investment Analysis course is required for a REALTOR® to receive their ALC designation.

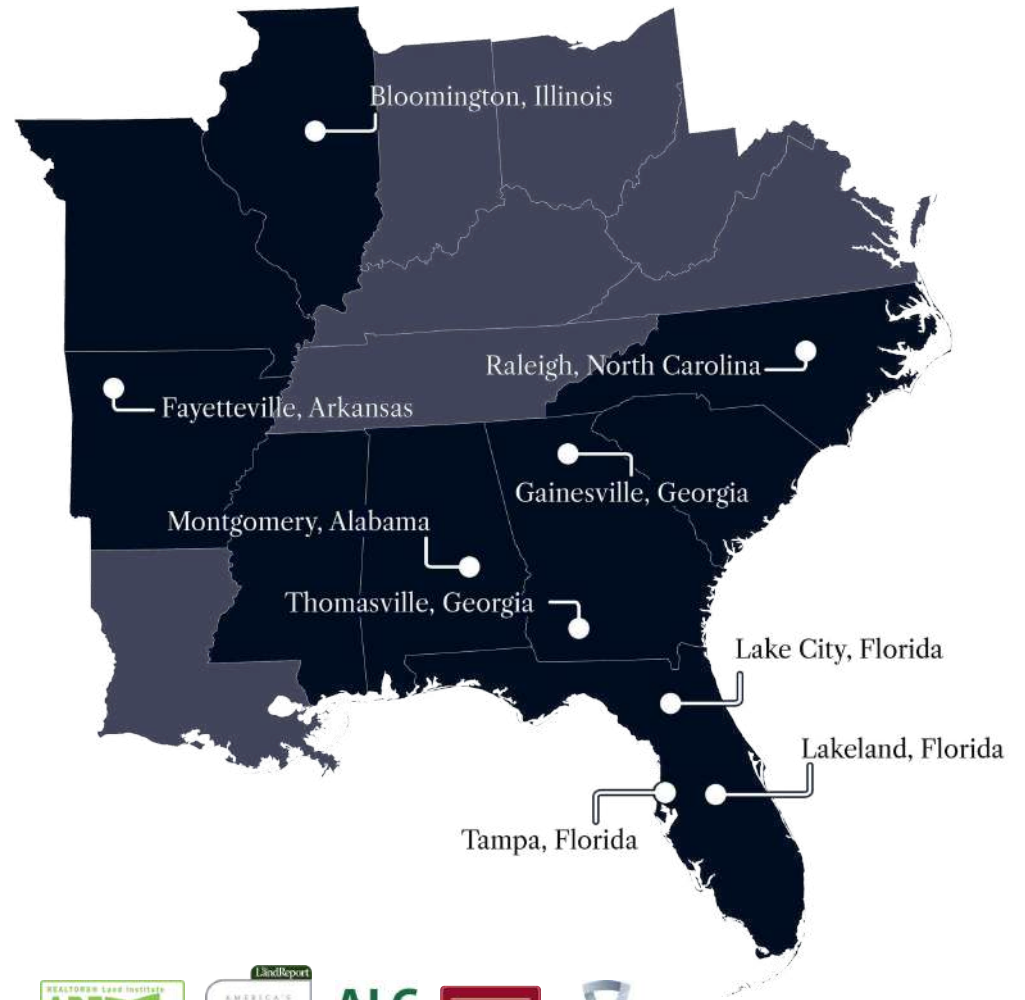
Fletcher is a top-selling real estate broker and widely respected leader in the land industry. He has received national recognition for his professional accomplishments, including one of RLI's highest honors as Land REALTOR® of America (1996), as well as, the RLI Alabama Land Broker of the Year (1991, 1995, 2016), RLI's Excellence in Instruction national award (2017), the NAR National Commercial Award (2018), the RLI National Robert C. Meeks Distinguished Service Award, and the Alabama REALTORS® David D. Robbins award.

Fletcher specializes in:

- Acreage and Estates
- Hunting and Recreational Land
- Timberland
- Waterfront
- Transitional Land



At Saunders Real Estate, we deliver full-service real estate solutions, built on more than 30 years of trusted experience. Our dedicated teams offer tailored guidance backed by deep regional insight and a proven track record. We believe that successful outcomes start with strong relationships built on trust and a shared commitment to your goals.



877-518-5263 • [info@saundersrealestate.com](mailto:info@saundersrealestate.com)



©2026 Saunders Real Estate, LLC. All rights reserved. The information contained in this communication is strictly confidential. This information has been obtained from sources believed to be reliable but has not been verified. NO WARRANTY OR REPRESENTATION, EXPRESS OR IMPLIED, IS MADE AS TO THE CONDITION OF THE PROPERTY (OR PROPERTIES) REFERENCED HEREIN OR AS TO THE ACCURACY OR COMPLETENESS OF THE INFORMATION CONTAINED HEREIN, AND SAME IS SUBMITTED SUBJECT TO ERRORS, OMISSIONS, CHANGE OF PRICE, RENTAL OR OTHER CONDITIONS, WITHDRAWAL WITHOUT NOTICE, AND TO ANY SPECIAL LISTING CONDITIONS IMPOSED BY THE PROPERTY OWNER(S). ANY PROJECTIONS, OPINIONS OR ESTIMATES ARE SUBJECT TO UNCERTAINTY AND DO NOT SIGNIFY CURRENT OR FUTURE PROPERTY PERFORMANCE.