

5925 ELLISON RIDGE ROAD
LOUISVILLE | WINSTON COUNTY, MS
A HOME ON 4.2± ACRES | \$245,000



SMALLTOWN
HUNTING PROPERTIES
& REAL ESTATE™

OFFICE (769) 760-0005 | WWW.SMALLTOWNPROPERTIES.COM

THE WINSTON 4.2

PROPERTY PROFILE

LOCATION:

- 5925 Ellison Ridge Road
Louisville, MS 39339
- Winston County
- 12.7± Miles SE of Louisville
- 39.5± Miles S of Starkville

COORDINATES:

- 33.06975, -88.8833

PROPERTY USE:

- Residential

TAX INFORMATION:

- Parcel 141440017-0000600
- 2025 Taxes: \$477.07

PROPERTY INFORMATION:

- 4.2± Total Acres
- 2.7± Acres of Mixed Timber
- 1,671± SqFt Brick Home
 - 3 Bedrooms/2 Bath
 - Large Living Room
 - Additional Room
 - 2 Additional Half Baths
 - Tile Floors & Carpet
 - 2-Car Garage
- 19'x21' Covered Patio
- 12'x24' Storage Building
- 10'x15' Open Storage Building
- 850'± Ellison Ridge
Road Frontage



SMALLTOWN
HUNTING PROPERTIES
& REAL ESTATESM

DEREK EAVES

LAND SPECIALIST

C: 662-803-2001

O: 769-760-0005

derek@smalltownproperties.com

2121 5th St., Suite 206 - Meridian, MS 39301

smalltownproperties.com

Information is believed to be accurate but not guaranteed.

WELCOME TO THE WINSTON 4.2

WELCOME TO THE WINSTON 4.2! Located in the quiet countryside of Winston County, Mississippi, this 4.2± acre residential property offers a comfortable brick home with room to enjoy both indoor and outdoor living. Conveniently situated 12.7± miles southeast of Louisville and 39.5± miles south of Starkville, the Winston 4.2 fronts Ellison Ridge Road with approximately 850 feet of road frontage.

The centerpiece of the property is a well-maintained 1,671± square foot brick home featuring three bedrooms and two full baths, along with an additional room ideal for a home office, or an extra bedroom. Inside, you'll find a spacious living room, tile flooring and carpet throughout, plus two additional half baths for added convenience. The home also includes a two-car garage and a large 19'x21' covered patio, perfect for entertaining or relaxing outdoors.



SMALLTOWN
HUNTING PROPERTIES
& REAL ESTATESM

DEREK EAVES

LAND SPECIALIST

C: 662-803-2001

O: 769-760-0005

derek@smalltownproperties.com

2121 5th St., Suite 206 - Meridian, MS 39301

smalltownproperties.com

Information is believed to be accurate but not guaranteed.

MORE ABOUT THE WINSTON 4.2

Additional improvements include a 12'x24' storage building and a 10'x15' open storage building, providing plenty of room for tools, equipment, or recreational storage. The land consists of approximately 2.7± acres of pine and mixed hardwood timber, offering privacy, shade, and an attractive natural setting around the home.

Whether you're looking for a full-time residence or a quiet country retreat, the Winston 4.2 offers space, convenience, and comfortable rural living.

**Contact Derek Eaves today to schedule a private showing
and make 5925 Ellison Ridge Road your new address.**



SMALLTOWN
HUNTING PROPERTIES
& REAL ESTATESM

DEREK EAVES

LAND SPECIALIST

C: 662-803-2001

O: 769-760-0005

derek@smalltownproperties.com

2121 5th St., Suite 206 - Meridian, MS 39301

smalltownproperties.com

Information is believed to be accurate but not guaranteed.



SMALLTOWN

HUNTING PROPERTIES
& REAL ESTATESM

DEREK EAVES

LAND SPECIALIST

C: 662-803-2001

O: 769-760-0005

derek@smalltownproperties.com

2121 5th St., Suite 206 - Meridian, MS 39301

smalltownproperties.com

Information is believed to be accurate but not guaranteed.

A HOME ON 4.2± ACRES 5925 ELLISON RIDGE ROAD LOUISVILLE WINSTON COUNTY, MISSISSIPPI



SMALLTOWN
HUNTING PROPERTIES
& REAL ESTATESM

DEREK EAVES

LAND SPECIALIST

C: 662-803-2001

O: 769-760-0005

derek@smalltownproperties.com

2121 5th St., Suite 206 - Meridian, MS 39301

smalltownproperties.com

Information is believed to be accurate but not guaranteed.



SMALLTOWN

**HUNTING PROPERTIES
& REAL ESTATESM**

DEREK EAVES

LAND SPECIALIST

C: 662-803-2001

O: 769-760-0005

derek@smalltownproperties.com

2121 5th St., Suite 206 - Meridian, MS 39301

smalltownproperties.com

Information is believed to be accurate but not guaranteed.



SMALLTOWN

HUNTING PROPERTIES
& REAL ESTATESM

DEREK EAVES

LAND SPECIALIST

C: 662-803-2001

O: 769-760-0005

derek@smalltownproperties.com

2121 5th St., Suite 206 - Meridian, MS 39301

smalltownproperties.com

Information is believed to be accurate but not guaranteed.

A HOME ON 4.2± ACRES | **5925 ELLISON RIDGE ROAD** | **LOUISVILLE** | **WINSTON COUNTY, MISSISSIPPI**



SMALLTOWN
HUNTING PROPERTIES
& REAL ESTATESM

DEREK EAVES

LAND SPECIALIST

C: 662-803-2001

O: 769-760-0005

derek@smalltownproperties.com

2121 5th St., Suite 206 - Meridian, MS 39301

smalltownproperties.com

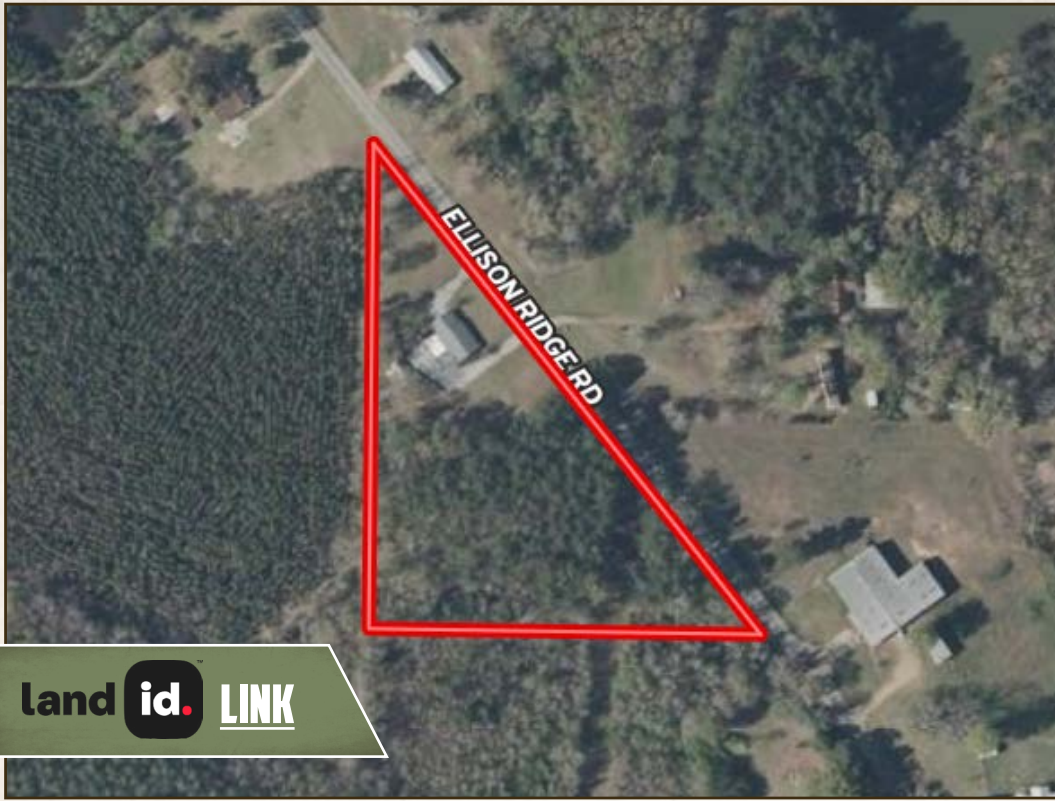
Information is believed to be accurate but not guaranteed.

A HOME ON 4.2± ACRES

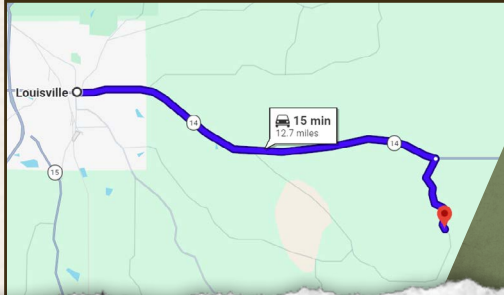
5925 ELLISON RIDGE ROAD

LOUISVILLE

WINSTON COUNTY, MISSISSIPPI



land id. LINK



Directions From Louisville, MS:
Travel on Highway 14 East for 10.4 miles. Turn right onto Ellison Ridge Road and continue 2.3 miles to the home and sign on your right.

[LINK TO GOOGLE MAP DIRECTIONS](#)



SMALLTOWN
HUNTING PROPERTIES
& REAL ESTATESM

DEREK EAVES

LAND SPECIALIST

C: 662-803-2001

O: 769-760-0005

derek@smalltownproperties.com

2121 5th St., Suite 206 - Meridian, MS 39301

smalltownproperties.com

Information is believed to be accurate but not guaranteed.