

Johnston County 50 ± Acres on Hwy 301

NC Hwy 301, Micro, North Carolina 27555

Kenneth Chesson
252-809-3896
kenneth@saundersrealestate.com

Robin Fleming
919-215-5621
rfleming@flemingproinc.com

PROPERTY OVERVIEW



Sale Price

\$900,000

Offering Summary

Acreage:	50 Acres
Price / Acre:	\$18,000
State:	North Carolina
City:	Micro
County:	Johnston
Property Type:	Development Land

Property Overview

This premier 50-acre property represents a high-value opportunity for strategic land investment or large-scale development. Boasting significant road frontage along NC Hwy 301, the location offers exceptional visibility and ease of access for a variety of future uses. The site's logistical advantage is unmatched, situated just minutes from the I-95 and I-40 corridors, providing a direct link to major regional markets. Positioned perfectly between the rapid expansion of Raleigh and the military industrial hub of Goldsboro, this acreage serves as a vital bridge for growth. With its expansive footprint and prime highway exposure, this tract is uniquely equipped to accommodate residential or commercial ventures looking to capitalize on North Carolina's most active development corridor.



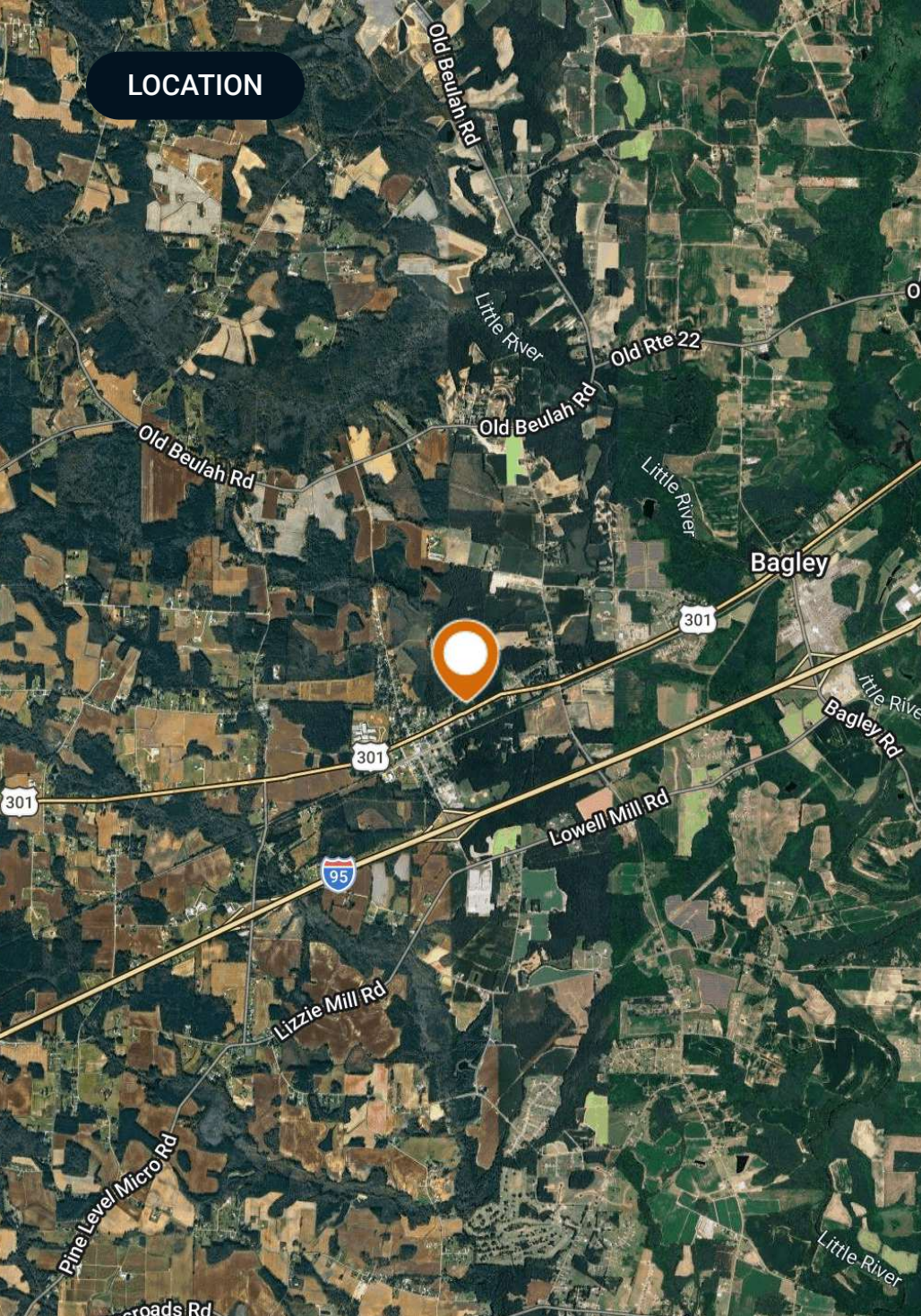
Location Description

Located in the small but strategically positioned town of Micro in Johnston County, this area offers convenient access to major transportation and commercial corridors in eastern North Carolina. Just minutes away, the community of Smithfield serves as the county seat and features regional shopping destinations such as Carolina Premium Outlets and cultural attractions like the Ava Gardner Museum. The location also benefits from proximity to Interstate 95 and Interstate 40, major East Coast transportation routes connecting the region to larger markets including Raleigh and Wilson. This combination of rural setting, regional amenities and excellent highway connectivity makes the area attractive for investors seeking growth opportunities in a rapidly developing corridor.

Property Highlights

- 50 ± acres with extensive frontage along NC Hwy 301, offering strong visibility and access.
- Minutes from I-95 and I-40, connecting the property to Raleigh, Goldsboro, Wilson, and other regional markets.
- Strategically positioned within one of eastern North Carolina's active growth corridors.
- Near Smithfield's retail and commercial amenities while maintaining a rural setting.

LOCATION



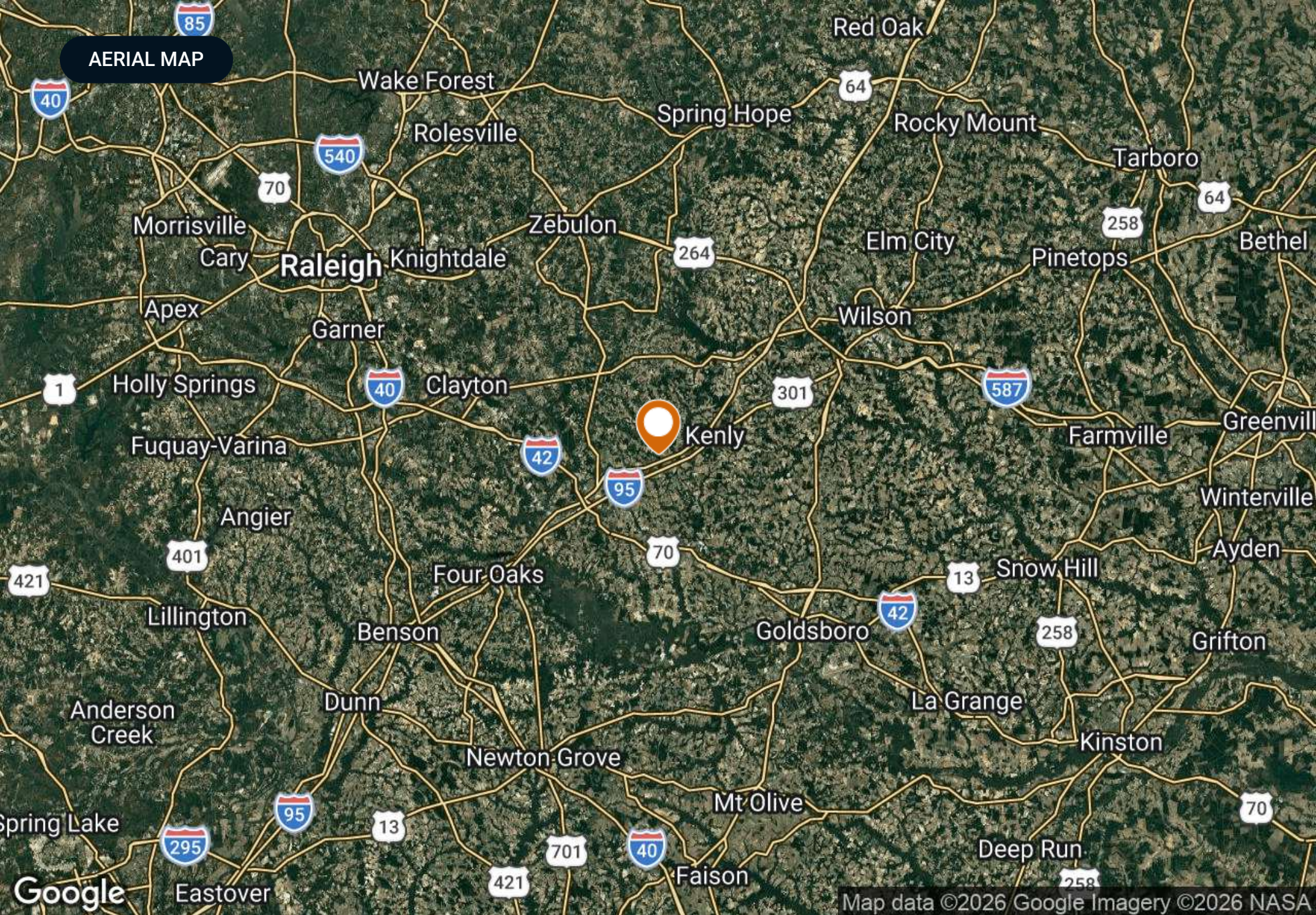
Location & Driving Directions

Parcel: 10007100

GPS: 35.5690398, -78.1997591

Driving Directions: Contact agent for directions

Showing Instructions: Contact agent for instructions



AERIAL MAP

PROPERTY OUTLINE



Johnston County 50 ± Acres on Hwy 301

■ Polygon



©2026 Saunders Real Estate. Any information displayed should be verified and is not guaranteed to be accurate by Saunders Real Estate. You may not copy or use this material without written consent from Saunders Real Estate.

WETLANDS MAP



Johnston County 50 ± Acres on Hwy 301 : Wetlands NWI

- ▭ Polygon
- ▭ Johnston County 50 ± Acres on Hwy 301 : Wetlands NWI: Palustrine

CODE	DESCRIPTION	ACRES
PFO1A	Freshwater Forested/Shrub Wetland	6.94
TOTAL UPLAND		42.88
TOTAL WETLAND		6.94
TOTAL		49.82



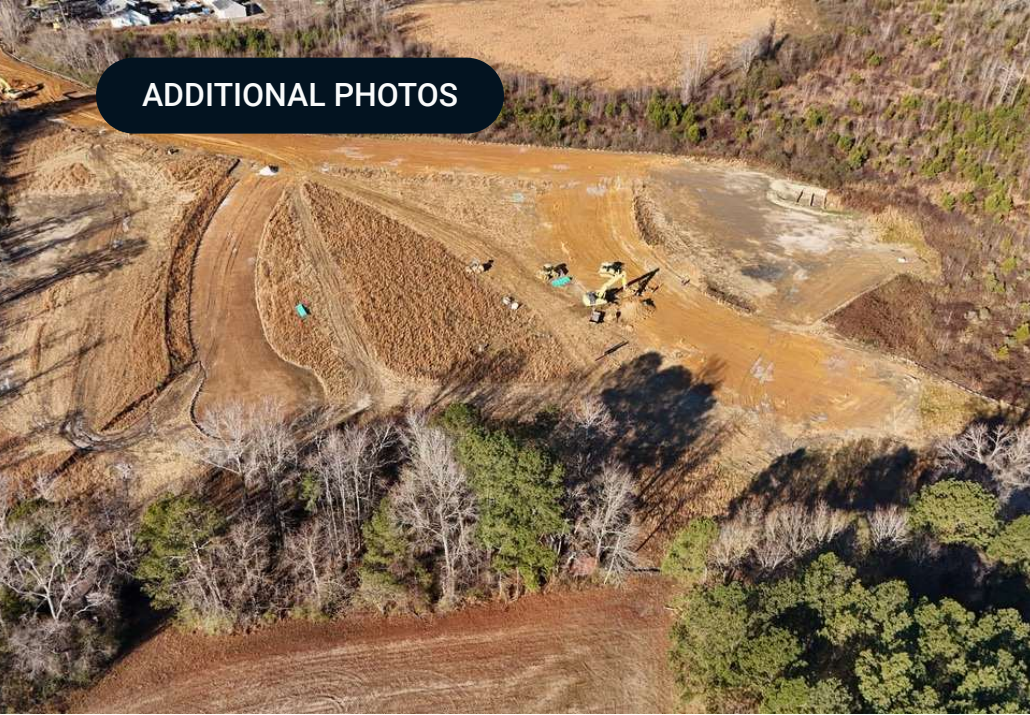
©2026 Saunders Real Estate. Any information displayed should be verified and is not guaranteed to be accurate by Saunders Real Estate. You may not copy or use this material without written consent from Saunders Real Estate.

RETAILER MAP



Map data ©2026 Imagery ©2026 Airbus, CNES / Airbus, Landsat / Copernicus, Maxar Technologies

ADDITIONAL PHOTOS

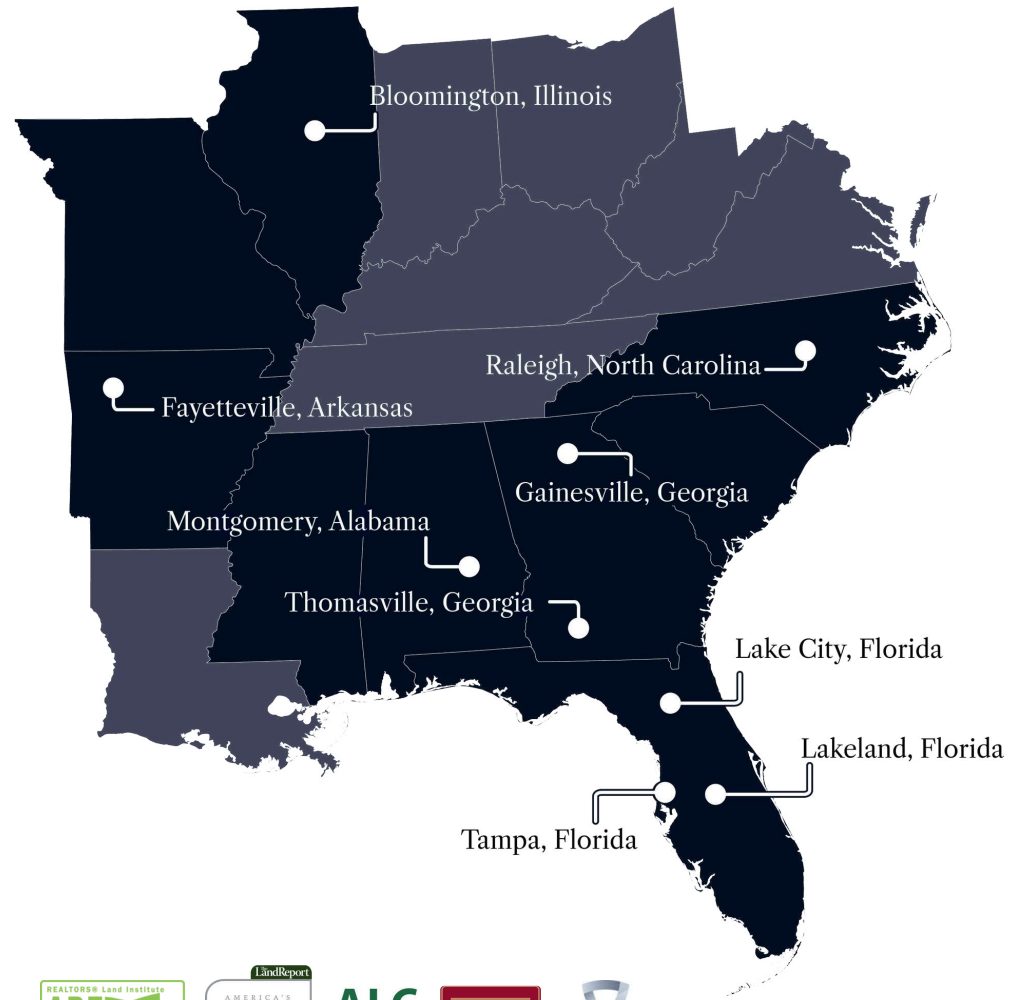


ADDITIONAL PHOTOS





At Saunders Real Estate, we deliver full-service real estate solutions, built on more than 30 years of trusted experience. Our dedicated teams offer tailored guidance backed by deep regional insight and a proven track record. We believe that successful outcomes start with strong relationships built on trust and a shared commitment to your goals.



877-518-5263 • info@saundersrealestate.com



©2026 Saunders Real Estate, LLC. All rights reserved. The information contained in this communication is strictly confidential. This information has been obtained from sources believed to be reliable but has not been verified. NO WARRANTY OR REPRESENTATION, EXPRESS OR IMPLIED, IS MADE AS TO THE CONDITION OF THE PROPERTY (OR PROPERTIES) REFERENCED HEREIN OR AS TO THE ACCURACY OR COMPLETENESS OF THE INFORMATION CONTAINED HEREIN, AND SAME IS SUBMITTED SUBJECT TO ERRORS, OMISSIONS, CHANGE OF PRICE, RENTAL OR OTHER CONDITIONS, WITHDRAWAL WITHOUT NOTICE, AND TO ANY SPECIAL LISTING CONDITIONS IMPOSED BY THE PROPERTY OWNER(S). ANY PROJECTIONS, OPINIONS OR ESTIMATES ARE SUBJECT TO UNCERTAINTY AND DO NOT SIGNIFY CURRENT OR FUTURE PROPERTY PERFORMANCE.