

# East Cotton Farm

East Cotton Road, Eclectic, Alabama 36024

---

Eric Leisy, ALC, GRI  
334-657-6707  
ericleisy@saundersrealestate.com

## PROPERTY OVERVIEW



### Sale Price

\$459,000

### Offering Summary

Acreage:	83 ± Acres
Price / Acre:	\$5,530
State:	Alabama
City:	Eclectic
County:	Elmore
Property Type:	Hunting and Recreational Land, Timberland, Acreage and Estates

### Property Overview

This 83 ± acre recreational tract offers a great opportunity to own a versatile piece of land in a desirable location near Eclectic and just minutes from the waters of Lake Martin. Whether you're looking for a weekend getaway, a future homesite, or a solid recreational investment, this property checks the boxes.

The land is covered in large, mature pine timber, giving it both aesthetic appeal and long-term value. A nicely cleared area is already in place, making it easy to envision and build a home or cabin without the upfront work. The property also features a network of trails, providing easy access for riding, hunting, or simply enjoying the outdoors.

This area is known for its strong deer population, offering excellent hunting opportunities right out your back door. When you're not on the property, Lake Martin is just a short drive away, offering boating, fishing, and year-round recreation.

Conveniently located near Eclectic, you'll find good schools, local restaurants, and everyday amenities close by—making this property suitable for both full-time living or a weekend retreat.

If you've been looking for a manageable-sized recreational tract with homesite potential in a strong area, this one is worth a look.

## SPECIFICATIONS & FEATURES



## Specifications & Features

**Nearest Point of Interest:**

Minutes from Lake Martin

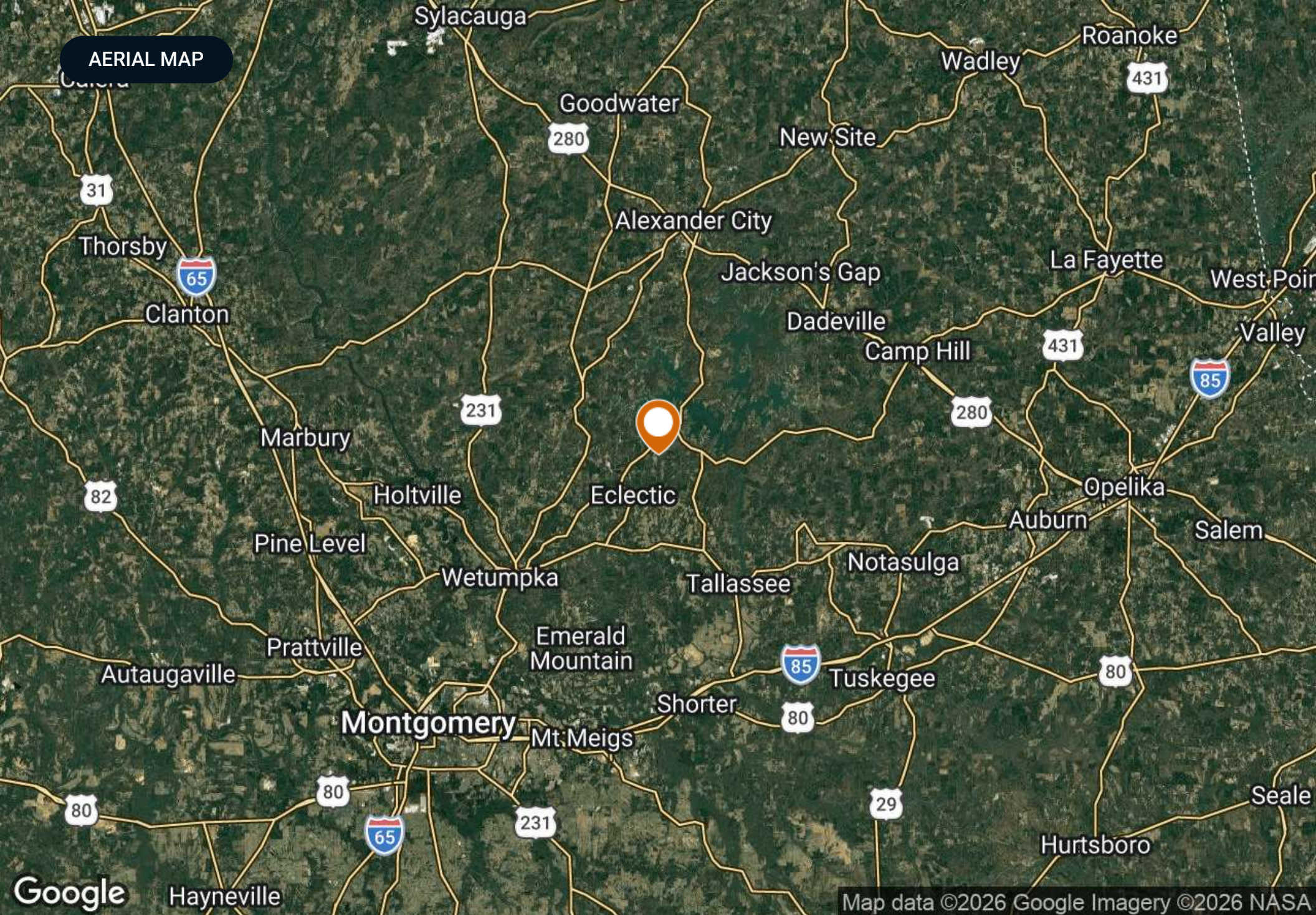
**Current Use:**

Timberland, Hunting and Recreational

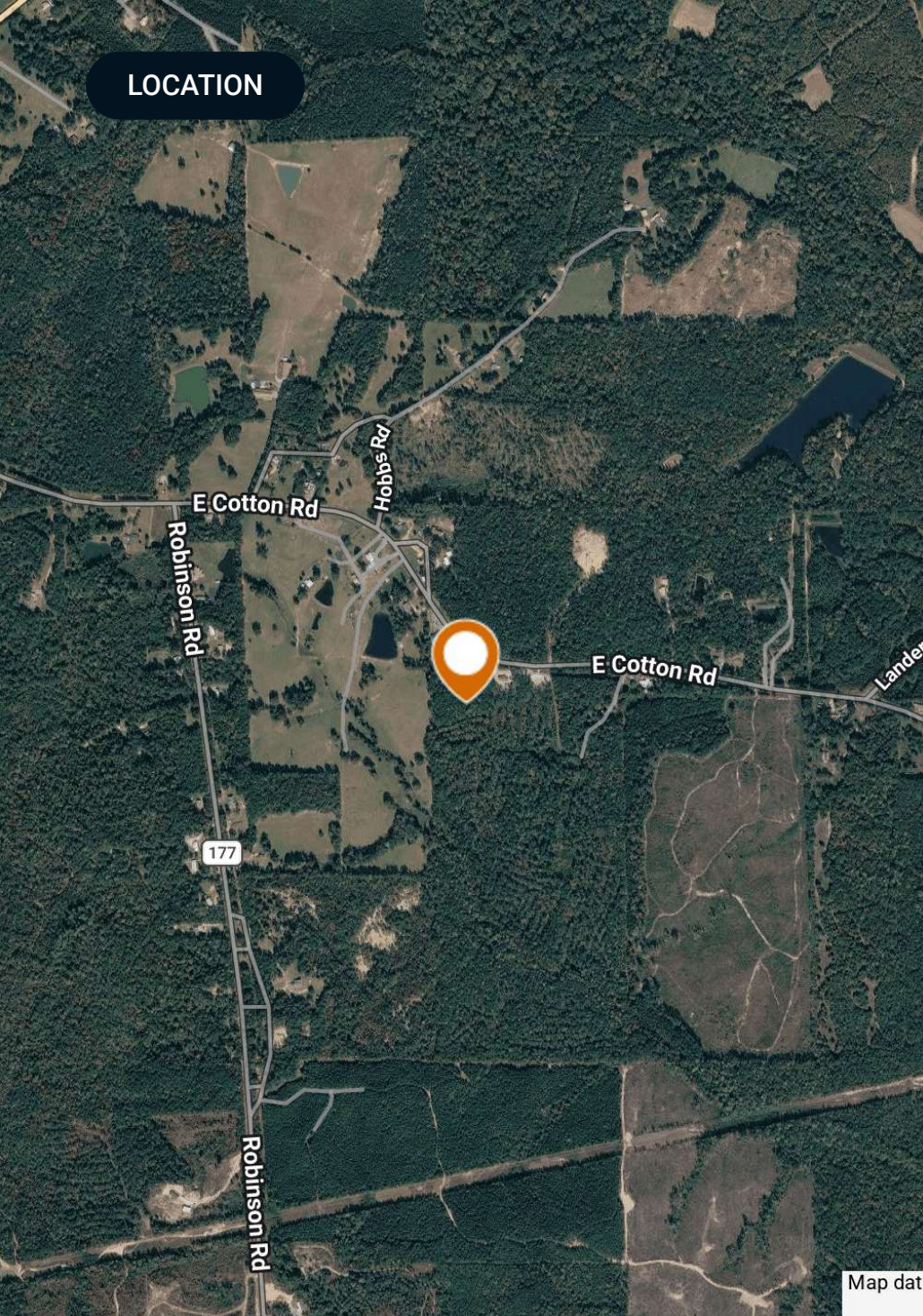
**Land Cover:**

Partially open with the majority in massive pines

AERIAL MAP



## LOCATION



## Location & Driving Directions

Parcel: 070931000009000  
0709310000019001  
0709310000020000

GPS: 32.6752127, -86.0014293

Driving Directions: Please call Eric Leisy for directions

Showing Instructions: Please call Eric Leisy for instructions.

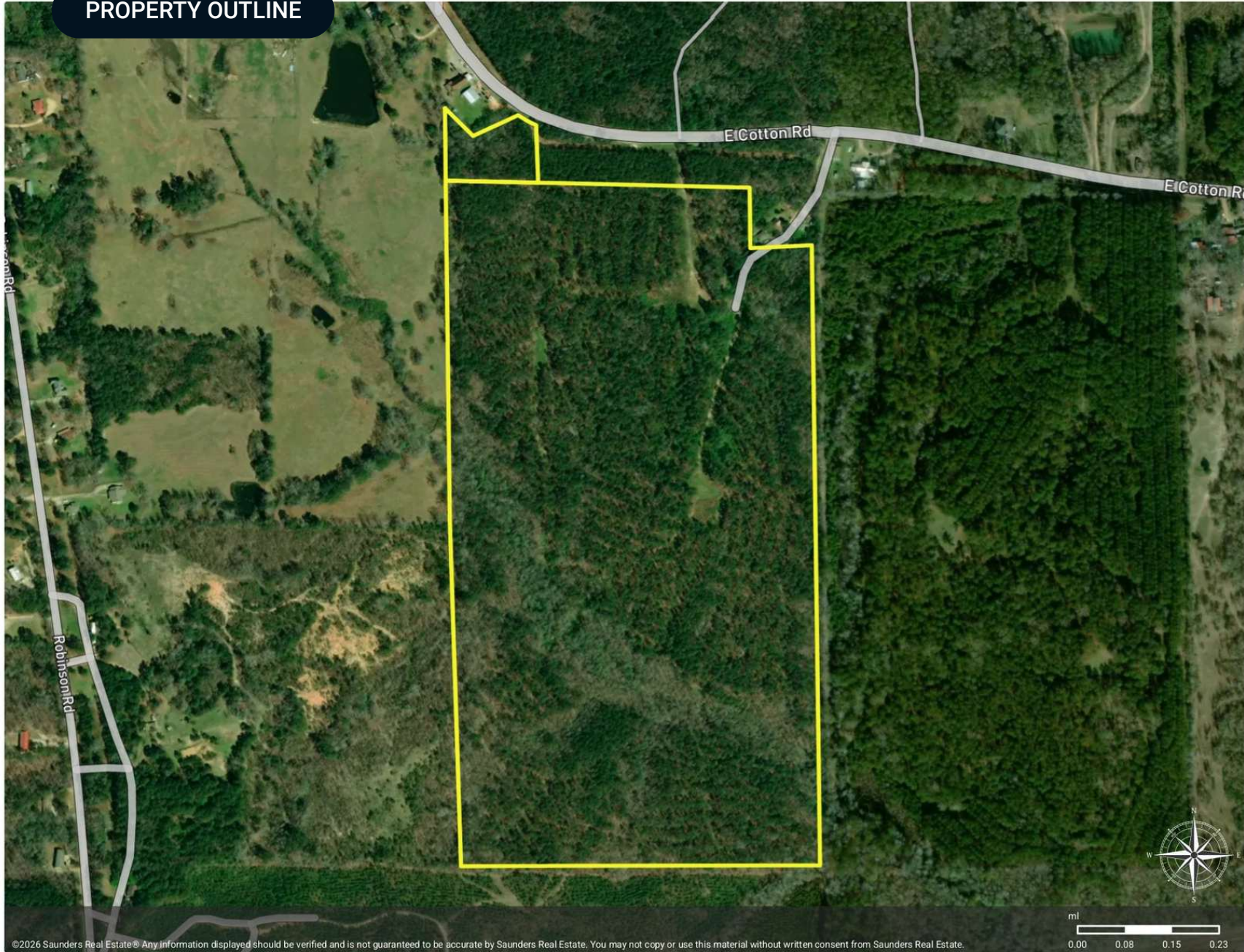
Map data

PROPERTY OUTLINE



East Cotton Farm

Polygon



©2026 Saunders Real Estate® Any information displayed should be verified and is not guaranteed to be accurate by Saunders Real Estate. You may not copy or use this material without written consent from Saunders Real Estate.

ADDITIONAL PHOTOS



## ADVISOR BIOGRAPHY



### Eric Leisy, ALC, GRI

Senior Advisor

[ericleisy@saundersrealestate.com](mailto:ericleisy@saundersrealestate.com)

Direct: **877-518-5263 x394** | Cell: **334-657-6707**

## Professional Background

Eric Leisy, ALC, GRI is a Senior Advisor at Saunders Real Estate, helping clients navigate the complex process of buying and selling land. With Eric, clients receive trusted guidance, market expertise, and proven results throughout every stage of a land transaction.

With more than 30 years of experience, including land brokerage, commercial lending, appraisal, development, and investment analysis, Eric brings a comprehensive perspective to each property. He brings a strong understanding of the factors that influence land value and potential, such as timber characteristics, soil types, wildlife habitat, agricultural use, access, and overall feasibility, helping clients better understand their options and make confident decisions. Eric's experience developing lifestyle centers, power centers, and retail sites like Walgreens also provides insight into commercial and residential development potential.

Eric is a graduate of the University of Alabama with a degree in Corporate Finance and Investments, giving him a strong foundation in financial analysis and investment evaluation. He has earned recognition as a seven-time national APEX Award recipient through the REALTORS® Land Institute (RLI) and holds the Accredited Land Consultant (ALC) and Graduate, REALTOR® Institute (GRI) designations. These honors reflect his ability to close complex transactions and deliver measurable results. In 2025, he was named Land Realtor of the Year for the RLI Alabama Chapter.

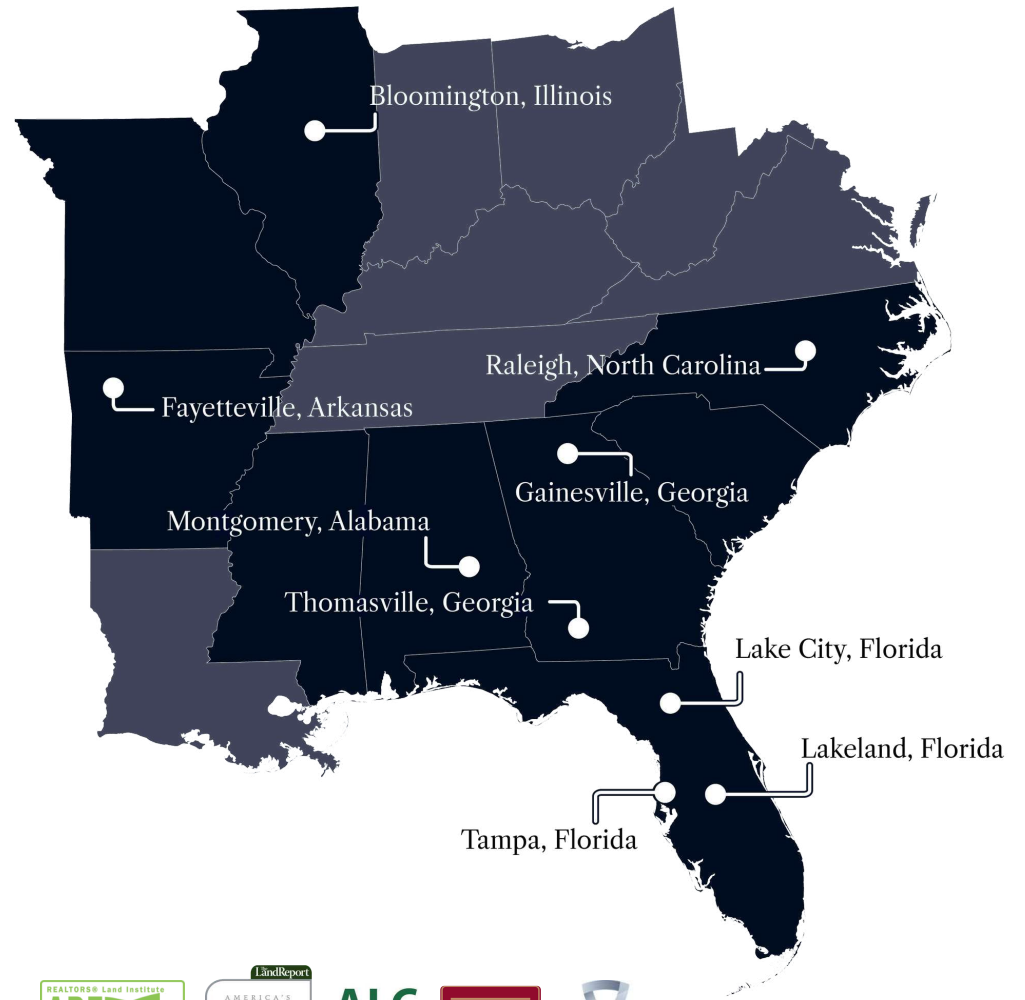
He has served in national and state leadership roles with the REALTORS® Land Institute and remains active with the Alabama Forestry Association, Alabama Wildlife Federation, and National Association of REALTORS®. These networks provide access to potential buyers, off-market opportunities, and market insights that help his clients.

Eric works with families of legacy farms and estates, heirs managing inherited property, farmers and timber investors, developers and planners, conservation-focused landowners, and recreational property buyers and sellers. Through acquisition or disposition, he combines financial insight, transaction expertise, and practical experience to guide clients through each decision, helping them achieve their goals.

Eric has been married to Melissa for 40 years. His hobbies, which include vegetable gardening, fly fishing, and turkey hunting, keep him outdoors and closely connected to the land. Playing rugby at the University of Alabama, and later coaching youth sports, taught him teamwork, discipline, and strategy: skills he applies to complex negotiations and multi-party transactions to reach successful outcomes.



At Saunders Real Estate, we deliver full-service real estate solutions, built on more than 30 years of trusted experience. Our dedicated teams offer tailored guidance backed by deep regional insight and a proven track record. We believe that successful outcomes start with strong relationships built on trust and a shared commitment to your goals.



877-518-5263 • [info@saundersrealestate.com](mailto:info@saundersrealestate.com)



©2026 Saunders Real Estate, LLC. All rights reserved. The information contained in this communication is strictly confidential. This information has been obtained from sources believed to be reliable but has not been verified. NO WARRANTY OR REPRESENTATION, EXPRESS OR IMPLIED, IS MADE AS TO THE CONDITION OF THE PROPERTY (OR PROPERTIES) REFERENCED HEREIN OR AS TO THE ACCURACY OR COMPLETENESS OF THE INFORMATION CONTAINED HEREIN, AND SAME IS SUBMITTED SUBJECT TO ERRORS, OMISSIONS, CHANGE OF PRICE, RENTAL OR OTHER CONDITIONS, WITHDRAWAL WITHOUT NOTICE, AND TO ANY SPECIAL LISTING CONDITIONS IMPOSED BY THE PROPERTY OWNER(S). ANY PROJECTIONS, OPINIONS OR ESTIMATES ARE SUBJECT TO UNCERTAINTY AND DO NOT SIGNIFY CURRENT OR FUTURE PROPERTY PERFORMANCE.