

Hobbie Road Farm

0 Hobbie Road, Snowdoun, Alabama 36105

Eric Leisy, ALC, GRI
334-657-6707
ericleisy@saundersrealestate.com



Sale Price

\$1,100,000

Offering Summary

Acreage:	138 Acres
Price / Acre:	\$7,971
State:	Alabama
City:	Snowdoun
County:	Montgomery
Property Type:	Farms and Cropland, Ranches and Pastureland, Acreage and Estates, Hunting and Recreational Land

Property Overview

Located in the highly sought-after Snowdoun community just 10 miles south of Montgomery, this 138 ± acre farm offers a rare opportunity to own a truly versatile and scenic property in one of the area’s most desirable rural settings.

Set along Hobbie Road—widely regarded as one of the most attractive stretches in the region—this property showcases the rolling hills, open views, and picturesque landscape that make this area so special. Land along Hobbie Road is seldom available, and its reputation for beauty and privacy continues to drive strong demand.

The farm is predominantly open pasture, providing a blank canvas for a variety of uses. Whether you envision building a private estate home overlooking gently rolling fields, creating a family compound with multiple homes and plenty of space to spread out, or exploring a residential development opportunity, this property offers the flexibility to bring those plans to life.

Beyond its development potential, the farm also carries strong recreational appeal. The mix of open ground and surrounding habitat supports excellent hunting opportunities, making it equally attractive as a weekend retreat or full-time residence with year-round enjoyment.

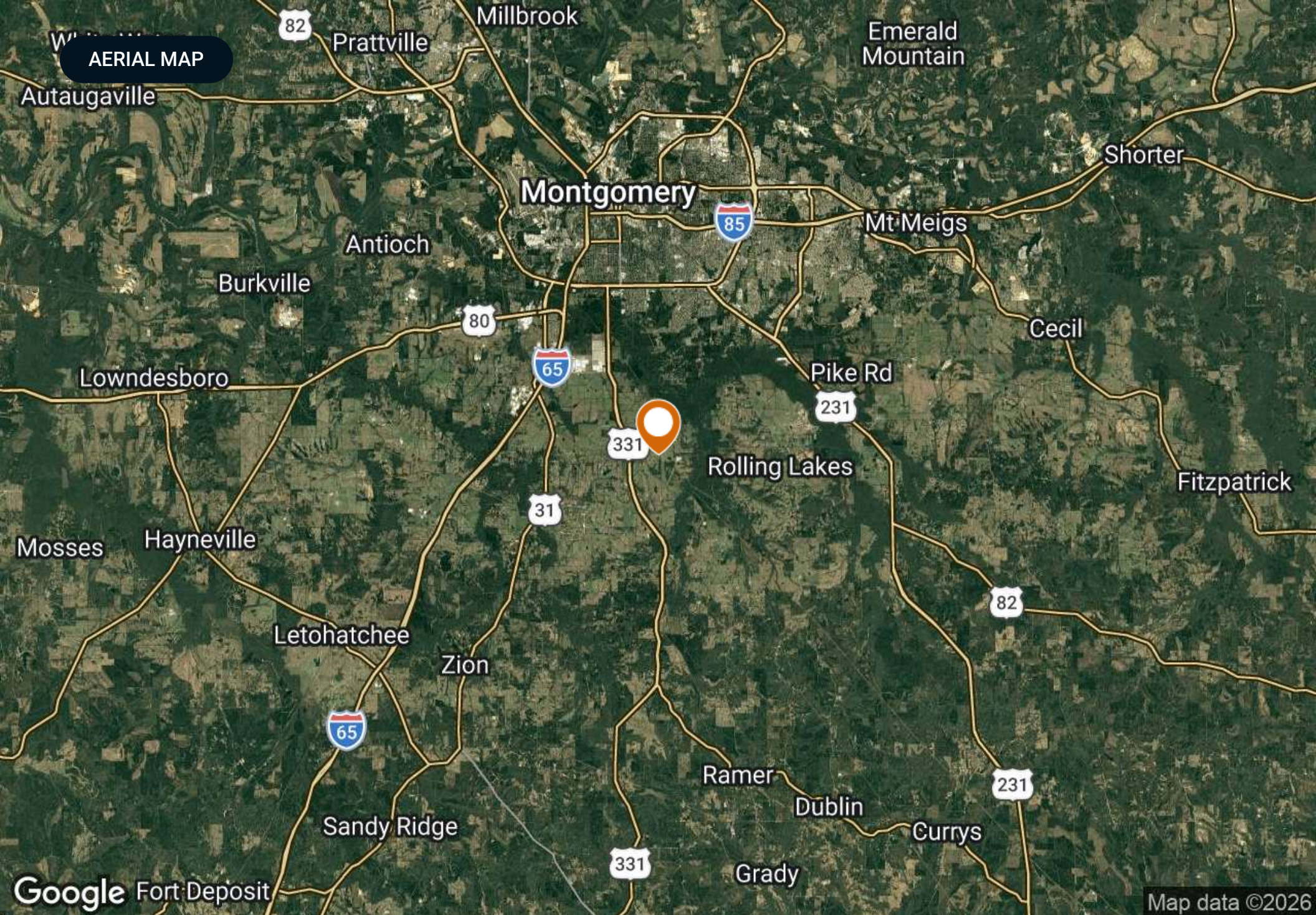
Properties of this size, quality, and location—especially along Hobbie Road—are increasingly hard to find. This is an opportunity to secure a legacy tract in a proven, high-demand area just minutes from the amenities of Montgomery, while still enjoying the peace and beauty of the countryside.

SPECIFICATIONS & FEATURES

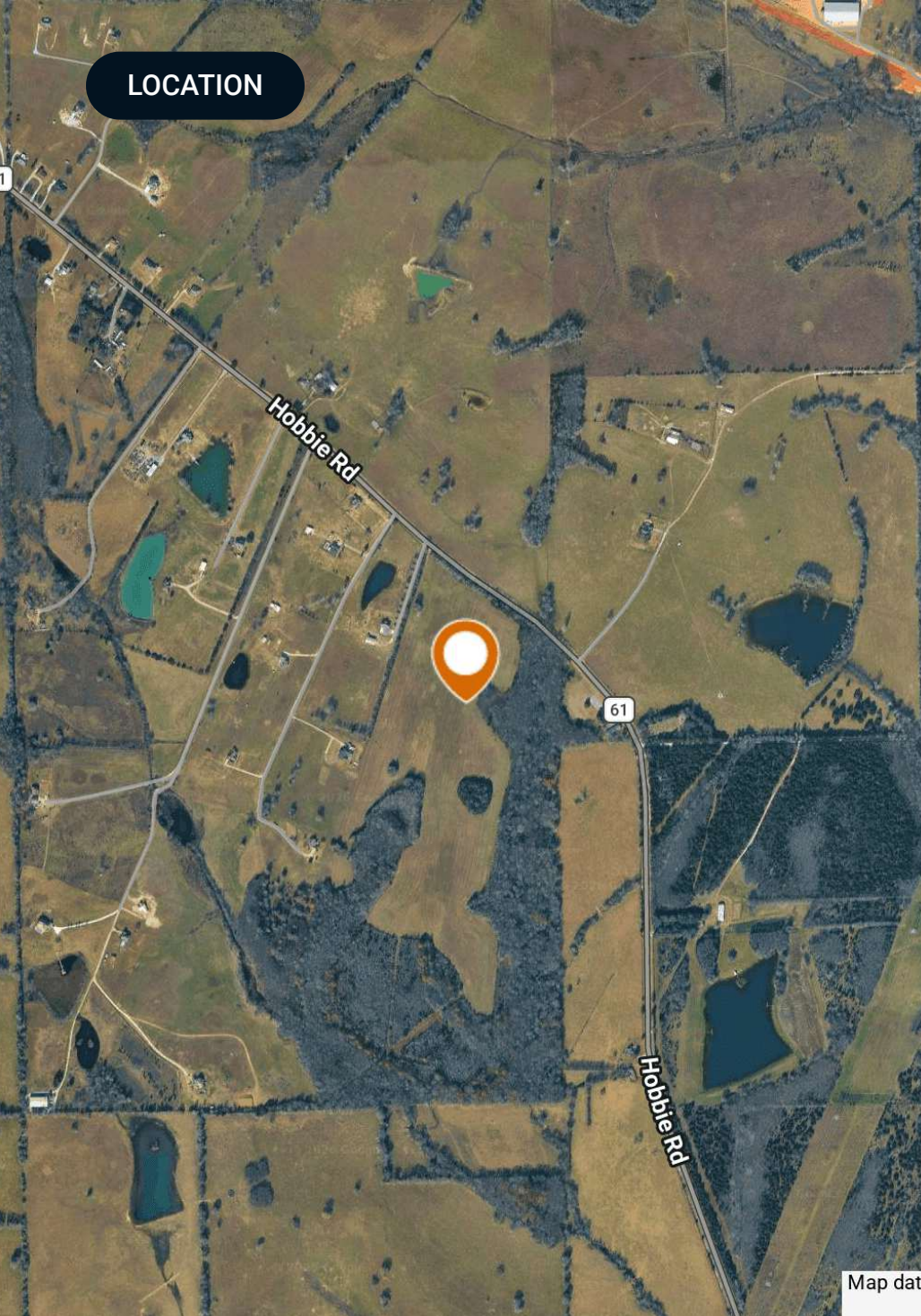


Specifications & Features

Taxes & Tax Year:	\$269.00 for 2025
Water Source & Utilities:	Utilities are available
Road Frontage:	1200' of road frontage on Hobbie Road
Nearest Point of Interest:	10 miles: Montgomery, Alabama
Current Use:	Farm, pastureland



LOCATION



Location & Driving Directions

Parcel: 1509320000004002
2103050000001000

GPS: 32.2287315, -86.274555

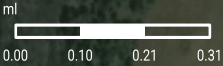
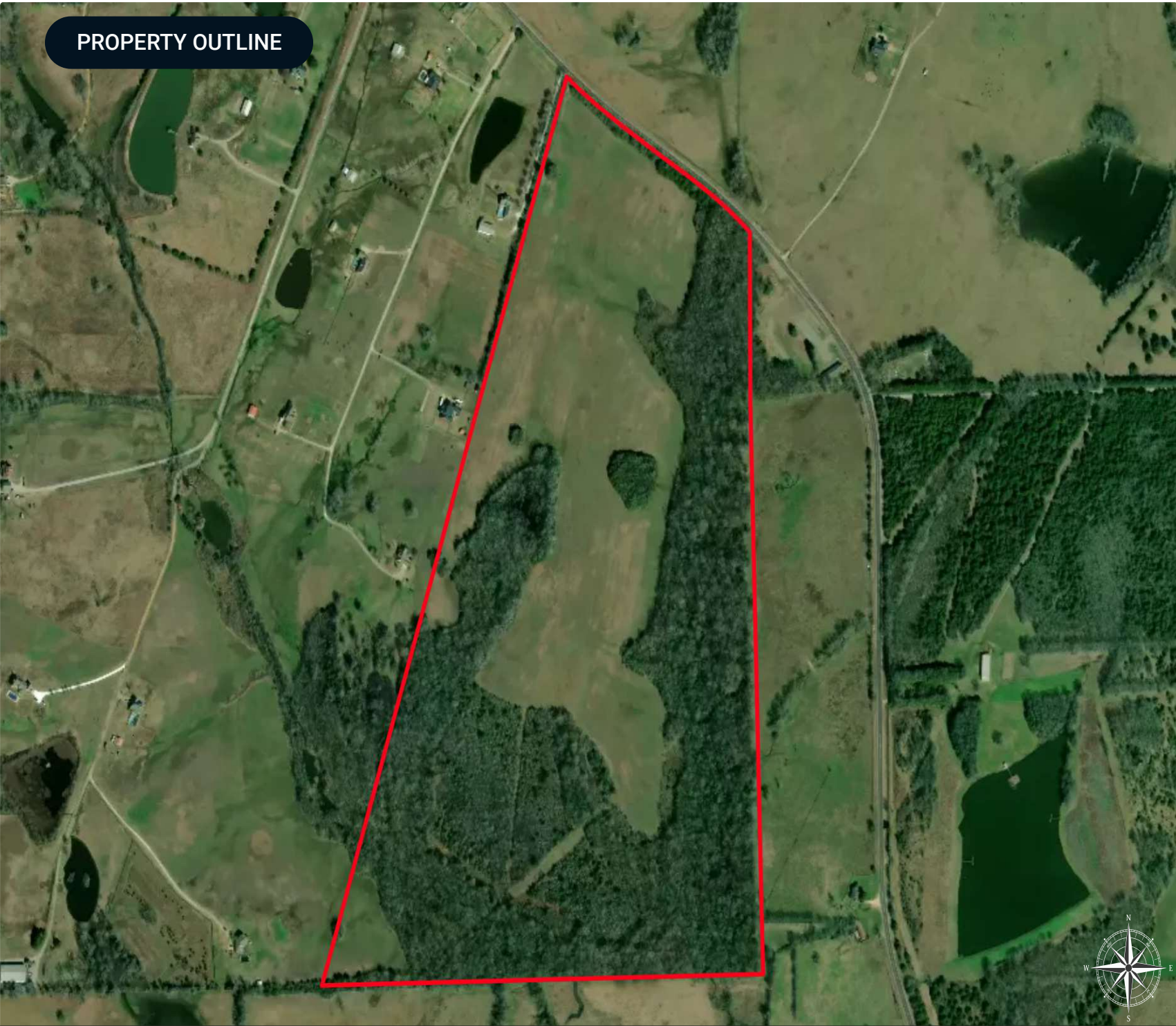
Driving Directions: Please call Eric Leisy for directions

Showing Instructions: Please call Eric Leisy for showing instructions

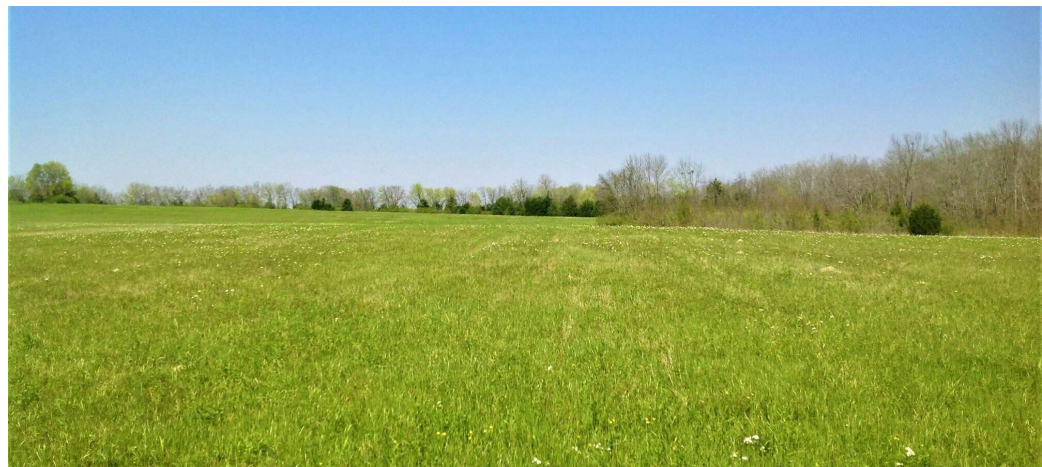
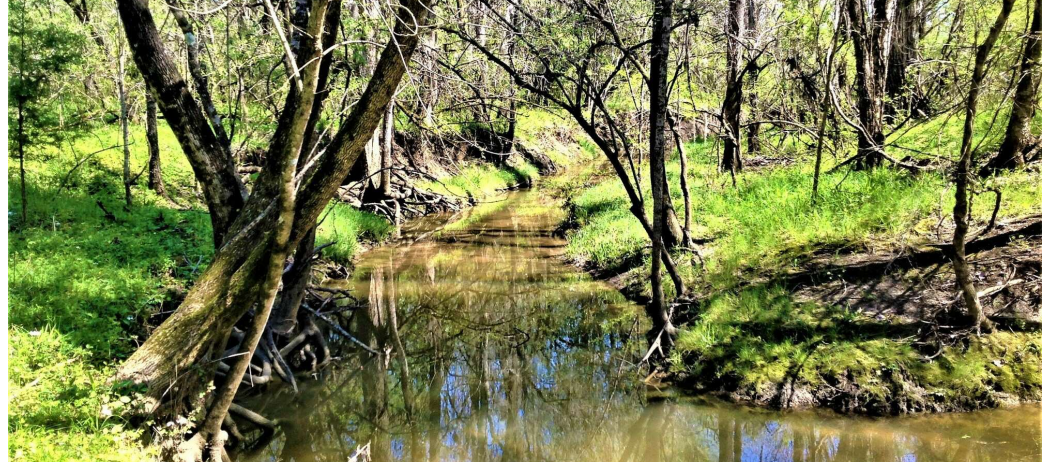
PROPERTY OUTLINE

Hobbie Road Farm

□ Polygon



ADDITIONAL PHOTOS



ADVISOR BIOGRAPHY



Eric Leisy, ALC, GRI

Senior Advisor

ericleisy@saundersrealestate.com

Direct: **877-518-5263 x394** | Cell: **334-657-6707**

Professional Background

Eric Leisy, ALC, GRI is a Senior Advisor at Saunders Real Estate, helping clients navigate the complex process of buying and selling land. With Eric, clients receive trusted guidance, market expertise, and proven results throughout every stage of a land transaction.

With more than 30 years of experience, including land brokerage, commercial lending, appraisal, development, and investment analysis, Eric brings a comprehensive perspective to each property. He brings a strong understanding of the factors that influence land value and potential, such as timber characteristics, soil types, wildlife habitat, agricultural use, access, and overall feasibility, helping clients better understand their options and make confident decisions. Eric's experience developing lifestyle centers, power centers, and retail sites like Walgreens also provides insight into commercial and residential development potential.

Eric is a graduate of the University of Alabama with a degree in Corporate Finance and Investments, giving him a strong foundation in financial analysis and investment evaluation. He has earned recognition as a seven-time national APEX Award recipient through the REALTORS® Land Institute (RLI) and holds the Accredited Land Consultant (ALC) and Graduate, REALTOR® Institute (GRI) designations. These honors reflect his ability to close complex transactions and deliver measurable results. In 2025, he was named Land Realtor of the Year for the RLI Alabama Chapter.

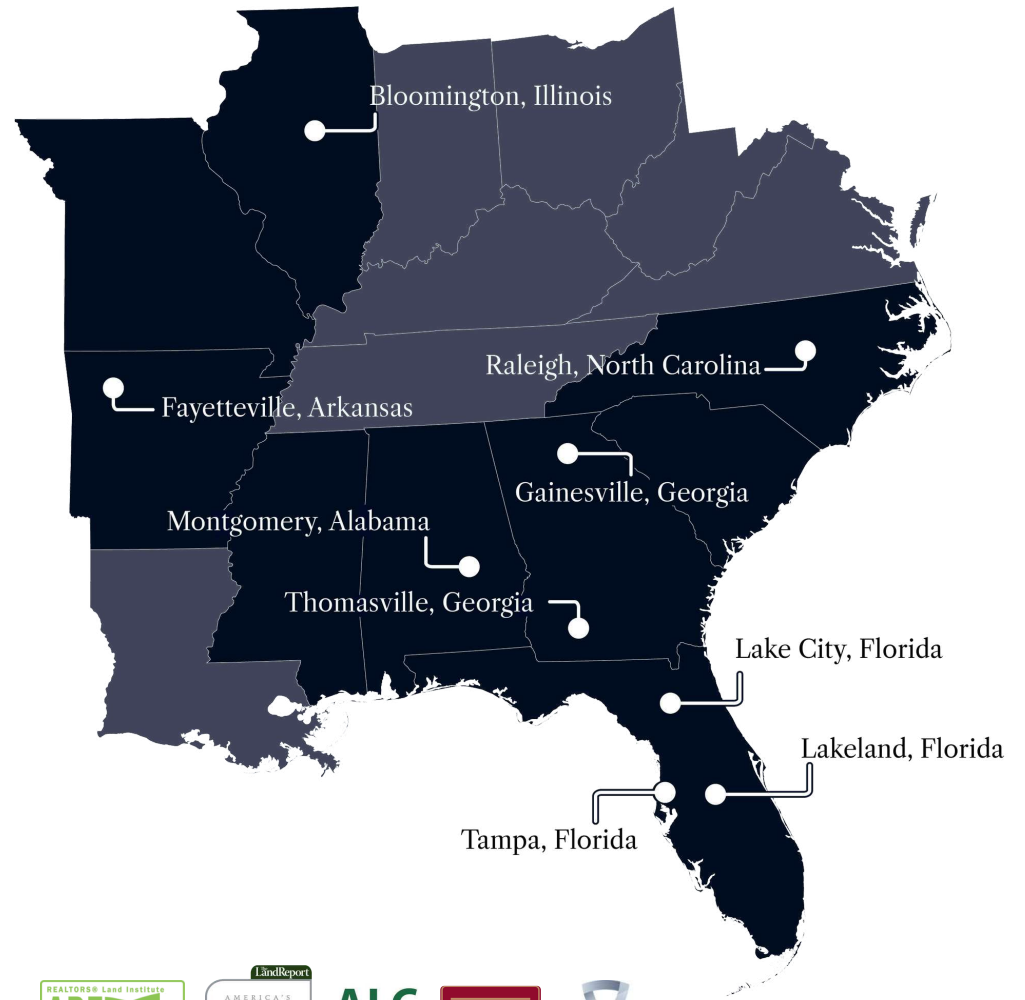
He has served in national and state leadership roles with the REALTORS® Land Institute and remains active with the Alabama Forestry Association, Alabama Wildlife Federation, and National Association of REALTORS®. These networks provide access to potential buyers, off-market opportunities, and market insights that help his clients.

Eric works with families of legacy farms and estates, heirs managing inherited property, farmers and timber investors, developers and planners, conservation-focused landowners, and recreational property buyers and sellers. Through acquisition or disposition, he combines financial insight, transaction expertise, and practical experience to guide clients through each decision, helping them achieve their goals.

Eric has been married to Melissa for 40 years. His hobbies, which include vegetable gardening, fly fishing, and turkey hunting, keep him outdoors and closely connected to the land. Playing rugby at the University of Alabama, and later coaching youth sports, taught him teamwork, discipline, and strategy: skills he applies to complex negotiations and multi-party transactions to reach successful outcomes.



At Saunders Real Estate, we deliver full-service real estate solutions, built on more than 30 years of trusted experience. Our dedicated teams offer tailored guidance backed by deep regional insight and a proven track record. We believe that successful outcomes start with strong relationships built on trust and a shared commitment to your goals.



877-518-5263 • info@saundersrealestate.com



©2026 Saunders Real Estate, LLC. All rights reserved. The information contained in this communication is strictly confidential. This information has been obtained from sources believed to be reliable but has not been verified. NO WARRANTY OR REPRESENTATION, EXPRESS OR IMPLIED, IS MADE AS TO THE CONDITION OF THE PROPERTY (OR PROPERTIES) REFERENCED HEREIN OR AS TO THE ACCURACY OR COMPLETENESS OF THE INFORMATION CONTAINED HEREIN, AND SAME IS SUBMITTED SUBJECT TO ERRORS, OMISSIONS, CHANGE OF PRICE, RENTAL OR OTHER CONDITIONS, WITHDRAWAL WITHOUT NOTICE, AND TO ANY SPECIAL LISTING CONDITIONS IMPOSED BY THE PROPERTY OWNER(S). ANY PROJECTIONS, OPINIONS OR ESTIMATES ARE SUBJECT TO UNCERTAINTY AND DO NOT SIGNIFY CURRENT OR FUTURE PROPERTY PERFORMANCE.