

# Hess Drive 2.88 ± Acre 3 Lot Package

0 Hess Drive, Laurel Park, North Carolina 28739

---

Kenneth Chesson  
252-809-3896  
kenneth@saundersrealestate.com

Shea R. Booster  
541-771-1177  
shea@saundersrealestate.com

## PROPERTY SUMMARY



### Offering Summary

Sale Price:	\$155,000
Total Acreage:	2.88 Acres
Number of Lots:	3
Price / Acre:	\$53,819
State:	North Carolina
City:	Laurel Park
County:	Henderson
Property Type:	Acreage and Estates

### Property Overview

Triple the beauty, triple the potential: Secure three pristine mountain lots in one of Western North Carolina's most coveted corridors. Perched near the summit on Hess Drive, this 2.88 ± acre wooded enclave comprises three distinct parcels (1.54 AC, 0.76 AC, and 0.58 AC). Offering a rare combination of rugged mountain beauty and prepared infrastructure, this property is an opportunity for those looking to build above it all.

### Property Highlights

- Located in beautiful Laurel Park
- Spacious residential lots
- Close to amenities and conveniences
- Potential for custom home construction
- Easy access to major roads
- Desirable neighborhood for investment
- Opportunity for future residential development



## Property Description

### **The Vision: Three Powerful Perspectives**

**The Investment Angle:** Land is the ultimate tangible asset and this offering provides a triple-threat advantage. With three separate PINs already in place, an investor can hold the entire assemblage for a high-value legacy estate or sell the parcels individually as the Hendersonville market continues its steady 2026 climb.

**The Getaway Angle:** Escape to a private sanctuary defined by the sights and sounds of the Blue Ridge. The property features Capps Branch, a pristine mountain stream that meanders along the edge of the 0.76-acre tract and through the 1.54-acre tract. Imagine owning a home on a mountain stream near the summit.

**The Development Angle:** Significant site-prep hurdles have already been cleared. A gravel road runs directly to and through the property, and electricity is already in place along the corridor. The steeper topography provides a natural "staircase" for multi-level custom builds.

### **Location & Lifestyle:**

Located in the sought-after "28739 corridor", you are perfectly positioned for both convenience and adventure:

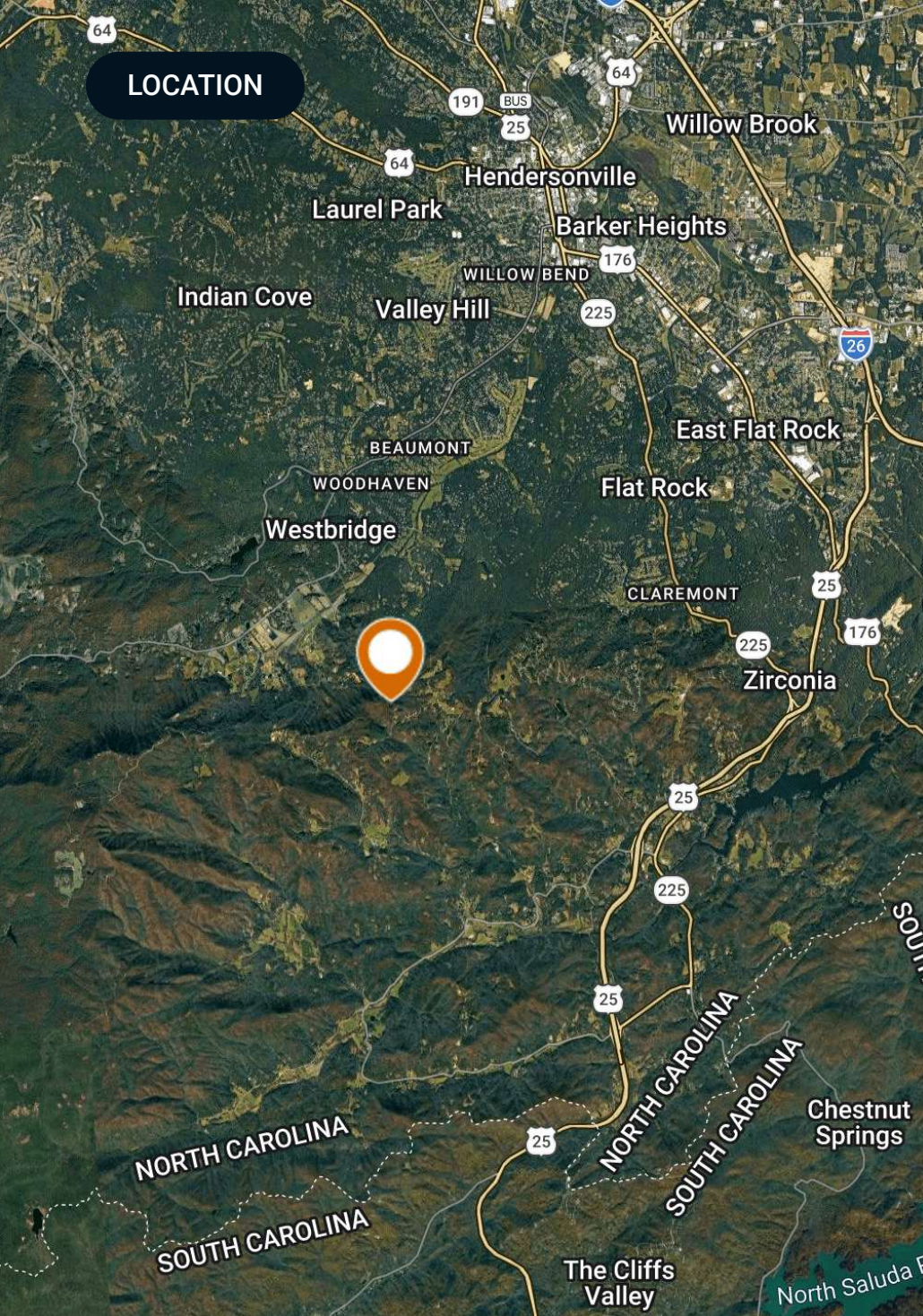
\* **Town & Travel:** Minutes to Historic Downtown Hendersonville, the charm of Flat Rock, and easy access to I-26.

\* **Nature's Playground:** A short drive to DuPont State Recreational Forest and Pisgah National Forest, putting world-class hiking and legendary waterfalls like Hooker and Triple Falls at your doorstep.

## Location Description

Hendersonville serves as a premier destination in Western North Carolina, offering a perfect blend of mountain serenity and urban convenience. The area is centered around Historic Downtown Hendersonville, famous for its flower-lined Main Street and local boutiques. Nature enthusiasts appreciate the proximity to Jump Off Rock and the expansive DuPont State Recreational Forest, while culture seekers enjoy the Flat Rock Playhouse and Carl Sandburg Home National Historic Site.

The location offers seamless access to the Asheville Regional Airport and I-26, making it a strategic hub for regional travel. With its flourishing craft beverage scene and renowned medical facilities like Pardee UNC Health Care, Hendersonville represents an exceptional lifestyle choice in the heart of the Blue Ridge Mountains.

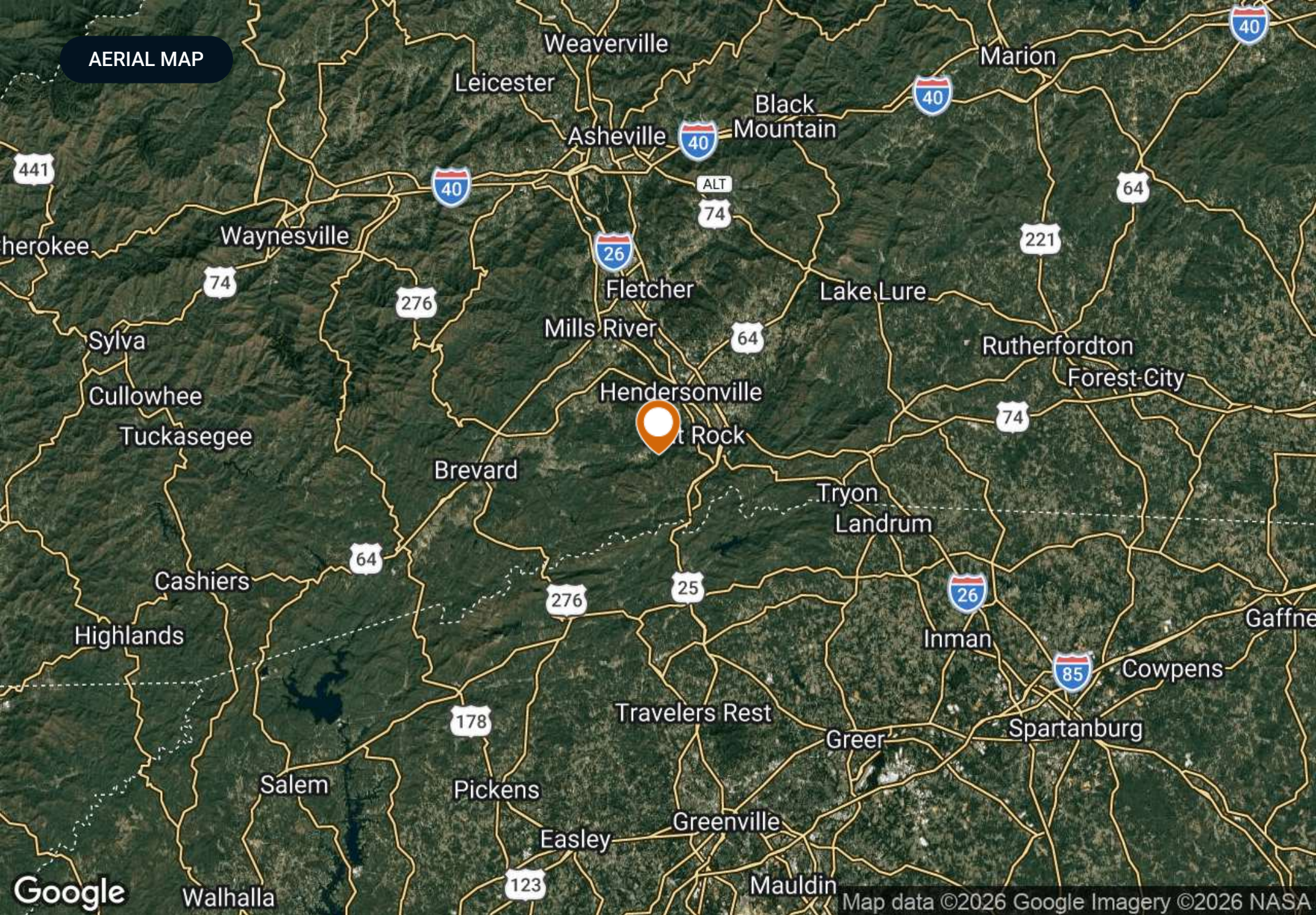


**LOCATION**

## Location & Driving Directions

- Parcel: 9556821307 9556729188  
9556727396
- GPS: 35.2450372466, -82.4911347542
- Driving Directions: Contact agent for directions
- Showing Instructions: Contact agent for instructions

AERIAL MAP



Google

Walhalla

Map data ©2026 Google Imagery ©2026 NASA

# PROPERTY OUTLINE



## Hess Drive 3 Lot Package

- Polygon
- Polygon
- Polygon



©2026 Saunders Real Estate® Any information displayed should be verified and is not guaranteed to be accurate by Saunders Real Estate. You may not copy or use this material without written consent from Saunders Real Estate.



# WETLANDS MAP



## Wetlands NWI

- Polygon
- Polygon
- Polygon
- Wetlands NWI: Riverine



©2026 Saunders Real Estate® Any information displayed should be verified and is not guaranteed to be accurate by Saunders Real Estate. You may not copy or use this material without written consent from Saunders Real Estate.

# SOILS MAP



### Soils

- Polygon
- Polygon
- Polygon
- Soils

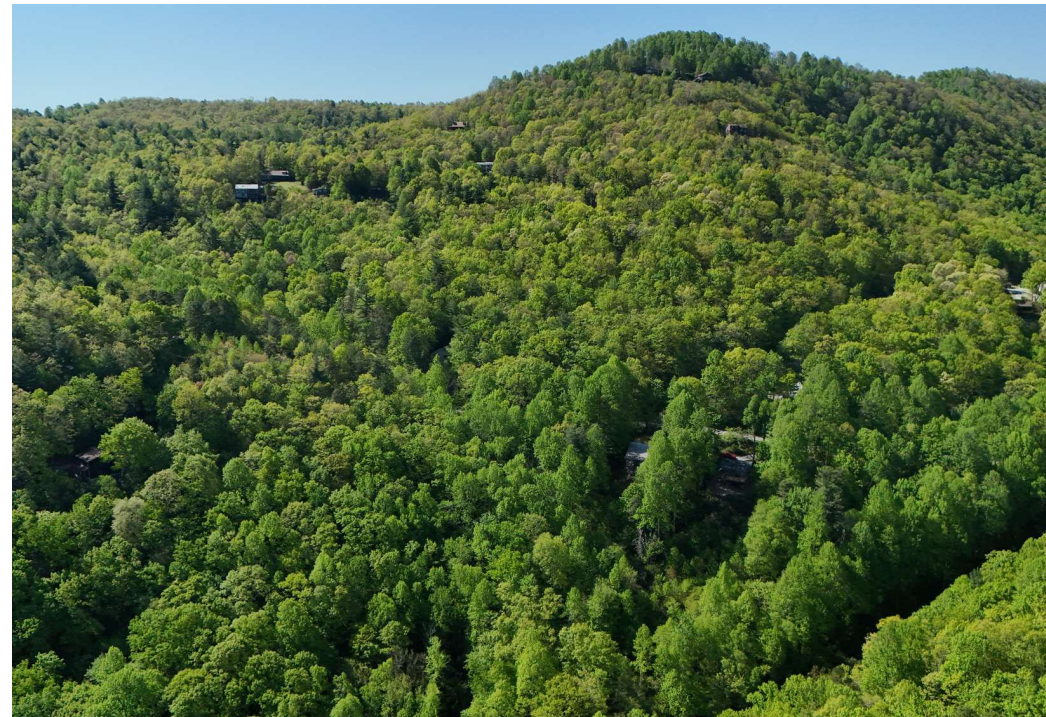


©2026 Saunders Real Estate® Any information displayed should be verified and is not guaranteed to be accurate by Saunders Real Estate. You may not copy or use this material without written consent from Saunders Real Estate.

ADDITIONAL PHOTOS

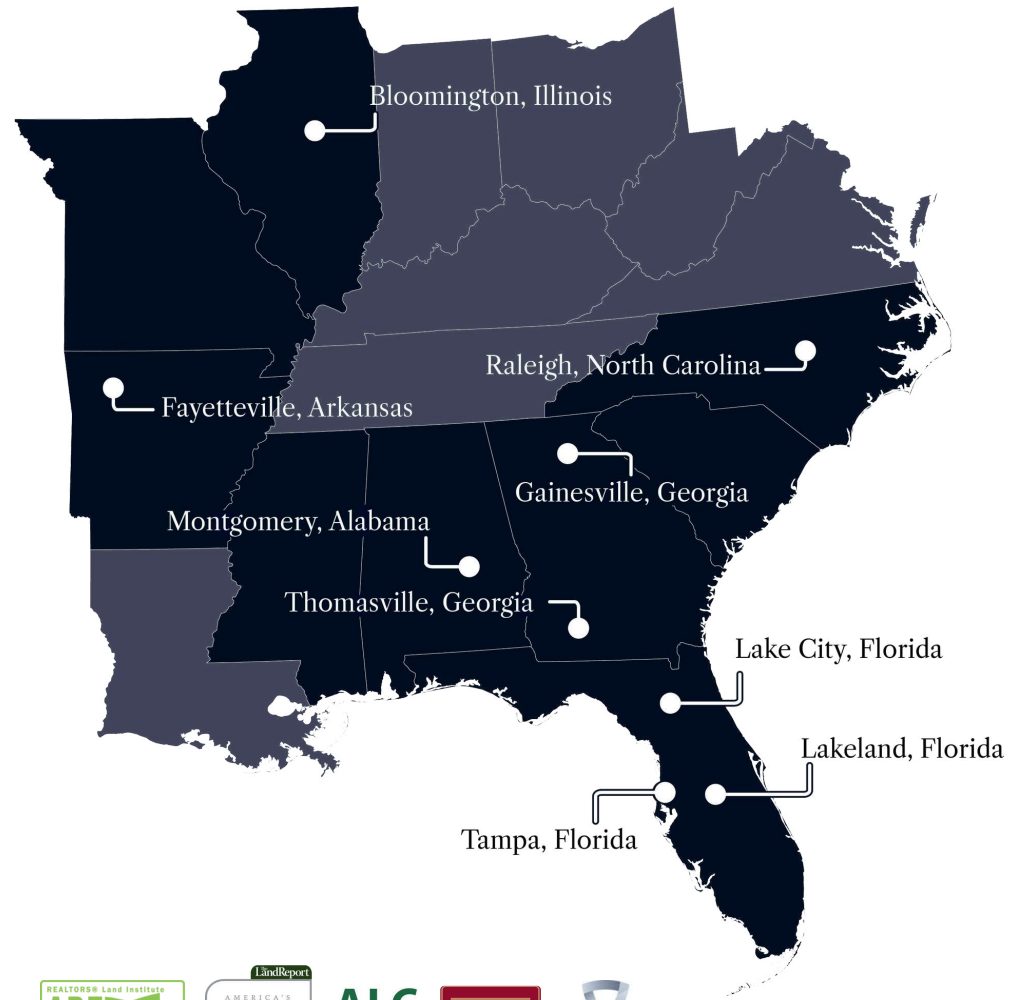


ADDITIONAL PHOTOS





At Saunders Real Estate, we deliver full-service real estate solutions, built on more than 30 years of trusted experience. Our dedicated teams offer tailored guidance backed by deep regional insight and a proven track record. We believe that successful outcomes start with strong relationships built on trust and a shared commitment to your goals.



877-518-5263 • [info@saundersrealestate.com](mailto:info@saundersrealestate.com)



©2026 Saunders Real Estate, LLC. All rights reserved. The information contained in this communication is strictly confidential. This information has been obtained from sources believed to be reliable but has not been verified. NO WARRANTY OR REPRESENTATION, EXPRESS OR IMPLIED, IS MADE AS TO THE CONDITION OF THE PROPERTY (OR PROPERTIES) REFERENCED HEREIN OR AS TO THE ACCURACY OR COMPLETENESS OF THE INFORMATION CONTAINED HEREIN, AND SAME IS SUBMITTED SUBJECT TO ERRORS, OMISSIONS, CHANGE OF PRICE, RENTAL OR OTHER CONDITIONS, WITHDRAWAL WITHOUT NOTICE, AND TO ANY SPECIAL LISTING CONDITIONS IMPOSED BY THE PROPERTY OWNER(S). ANY PROJECTIONS, OPINIONS OR ESTIMATES ARE SUBJECT TO UNCERTAINTY AND DO NOT SIGNIFY CURRENT OR FUTURE PROPERTY PERFORMANCE.