

20± ACRES
LEFLORE COUNTY, MS
\$110,000



SMALLTOWN
HUNTING PROPERTIES
& REAL ESTATE

OFFICE (662) 846-1425 | WWW.SMALLTOWNPROPERTIES.COM

THE LEFLORE 20

PROPERTY PROFILE

LOCATION:

- Highway 7
Greenwood, MS 38930
- Leflore County
- 1.7± Miles N of US Highway 82

COORDINATES:

- 33.5342, -90.1495

TAX INFORMATION:

- Parcel 0840103010030
- \$66.59 for 2025

PROPERTY USE:

- Mixed-Use
- Investment
- Recreational
- Development

PROPERTY INFORMATION:

- 20± Acres
- Vacant
- Highway Frontage



SMALLTOWN
HUNTING PROPERTIES
& REAL ESTATESM

WILSON BRITT

LAND SPECIALIST

C: 662-299-2367

O: 662-846-1425

wilson@smalltownproperties.com

701 W. Sunflower Rd - Cleveland, MS 38732

smalltownproperties.com

Information is believed to be accurate but not guaranteed.

WELCOME TO THE LEFLORE 20

DISCOVER THE POTENTIAL OF THIS 20± ACRE MULTI-USE TRACT IN LEFLORE COUNTY, JUST OUTSIDE OF GREENWOOD, MS. Positioned for versatility, the undeveloped property offers an exceptional opportunity for residential development, commercial use, or a mixed-use concept. Whether you envision a neighborhood, retail presence, or long-term investment, the possibilities are wide open.

With frontage on Highway 7 and located less than two miles north of Highway 82, the property sits in a highly traveled corridor between Greenwood and Grenada, providing strong visibility and accessibility for future growth.



SMALLTOWN
HUNTING PROPERTIES
& REAL ESTATESM

WILSON BRITT

LAND SPECIALIST

C: 662-299-2367

O: 662-846-1425

wilson@smalltownproperties.com

701 W. Sunflower Rd - Cleveland, MS 38732

smalltownproperties.com

Information is believed to be accurate but not guaranteed.

MORE ABOUT THE LEFLORE 20

Beyond its development potential, the land also offers recreational appeal. During our initial inspection, we noted active deer tracks, highlighting its potential for light hunting use or a private outdoor retreat, an added layer of value for those looking to blend investment with enjoyment.

Capitalize on the flexibility this tract offers: develop as a single large commercial site or subdivide into individual parcels to maximize value.

**Call Wilson Britt today to explore the potential
and schedule your private showing.**



SMALLTOWN
HUNTING PROPERTIES
& REAL ESTATESM

WILSON BRITT

LAND SPECIALIST

C: 662-299-2367

O: 662-846-1425

wilson@smalltownproperties.com

701 W. Sunflower Rd - Cleveland, MS 38732

smalltownproperties.com

Information is believed to be accurate but not guaranteed.

20± ACRES

LEFLORE COUNTY, MISSISSIPPI



SMALLTOWN
HUNTING PROPERTIES
& REAL ESTATESM

WILSON BRITT

LAND SPECIALIST

C: 662-299-2367

O: 662-846-1425

wilson@smalltownproperties.com

701 W. Sunflower Rd - Cleveland, MS 38732

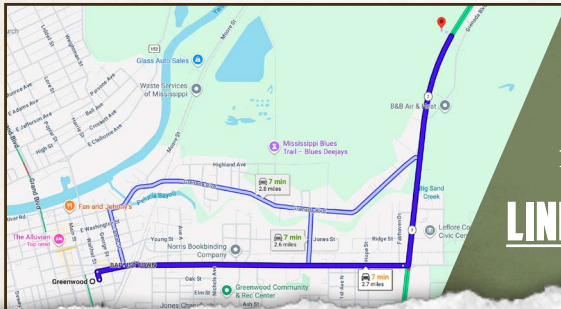
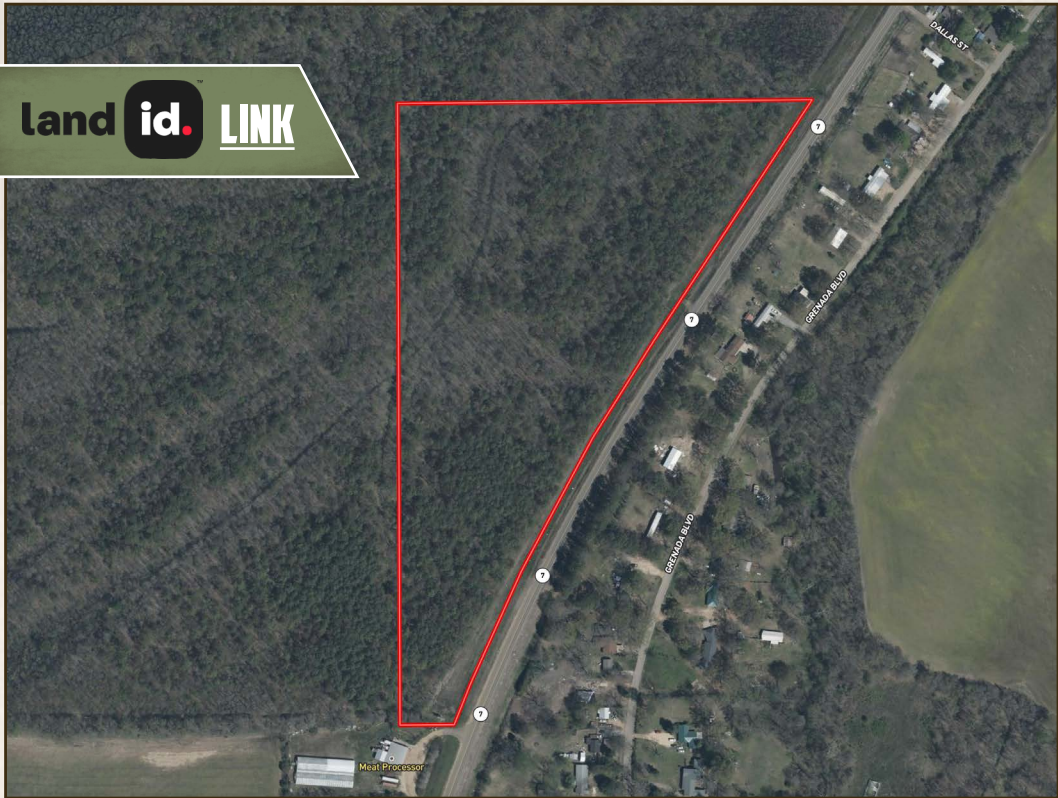
smalltownproperties.com

Information is believed to be accurate but not guaranteed.

20± ACRES

LEFLORE COUNTY, MISSISSIPPI

land id. LINK



Directions from Greenwood, MS:
 Travel 1.4 miles on Carrollton Ave.
 Turn left onto MS-7 N and continue
 1.2 miles to the destination on the left.

LINK TO GOOGLE MAP DIRECTIONS



SMALLTOWN
 HUNTING PROPERTIES
 & REAL ESTATESM

WILSON BRITT

LAND SPECIALIST

C: 662-299-2367

O: 662-846-1425

wilson@smalltownproperties.com

701 W. Sunflower Rd - Cleveland, MS 38732

smalltownproperties.com

Information is believed to be accurate but not guaranteed.