

72± Acres

Recreational Tract

McComb/Pike County/MS



\$190,800



Expect More. Get More.

TomSmithLandandHomes.com

Office: 601.898.2772

Property Information

Location:

- Close to Percy Quinn State Park in McComb, MS

Property Use:

- Recreational Tract
- Homesite Potential

Coordinates:

- 31.1672, -90.508

Property Highlights

- 72± Acres
- Recreational Tract
- Great Road System for Easy Access
- Mostly Pines with Mixed Hardwood



JOSH WREN REALTOR®
O: 601.898.2772 | C: 601.497.9440
Josh@TomSmithLand.com



CHAD WILSON REALTOR®
O: 601.898.2772 | C: 601.750.1970
Chad@TomSmithLand.com

Expect More. Get More.

TomSmithLandandHomes.com

The Real Estate Experts You Can Trust!

Information is believed to be accurate but not guaranteed.



The Property

72± Acres

This beautiful 72± acre tract in Pike County offers an ideal blend of recreation, privacy, and accessibility, located just minutes from Percy Quinn State Park in McComb, MS. The property is predominantly covered in pine timber with a mix of hardwoods, creating a diverse habitat that supports abundant wildlife. A small pond adds both scenic charm and a reliable water source for game, while a well-maintained internal road system allows for easy navigation throughout the property. Deer signs have been observed across the land, making it a strong candidate for hunting enthusiasts, and established food plots are already in place to help attract and sustain wildlife. With approximately 600 feet of road frontage and two gated access points along Grady Lane, this tract offers both convenience and flexibility for entry. Whether you're looking for a recreational retreat, hunting property, or a private place to unwind, this Pike County acreage checks all the right boxes.



JOSH WREN
REALTOR®

O: 601.898.2772 | C: 601.497.9440
Josh@TomSmithLand.com



CHAD WILSON
REALTOR®

O: 601.898.2772 | C: 601.750.1970
Chad@TomSmithLand.com

TomSmithLandandHomes.com

Information is believed to be accurate but not guaranteed.



TomSmithLandandHomes.com

Information is believed to be accurate but not guaranteed.

The Property



JOSH WREN
REALTOR®

O: 601.898.2772 | C: 601.497.9440
Josh@TomSmithLand.com



CHAD WILSON
REALTOR®

O: 601.898.2772 | C: 601.750.1970
Chad@TomSmithLand.com

TomSmithLandandHomes.com

Information is believed to be accurate but not guaranteed.



TomSmithLandandHomes.com

Information is believed to be accurate but not guaranteed.

Aerial Photos



JOSH WREN

REALTOR®

O: 601.898.2772 | C: 601.497.9440

Josh@TomSmithLand.com



CHAD WILSON

REALTOR®

O: 601.898.2772 | C: 601.750.1970

Chad@TomSmithLand.com

Expect More. Get More.

The Real Estate Experts You Can Trust!

TomSmithLandandHomes.com

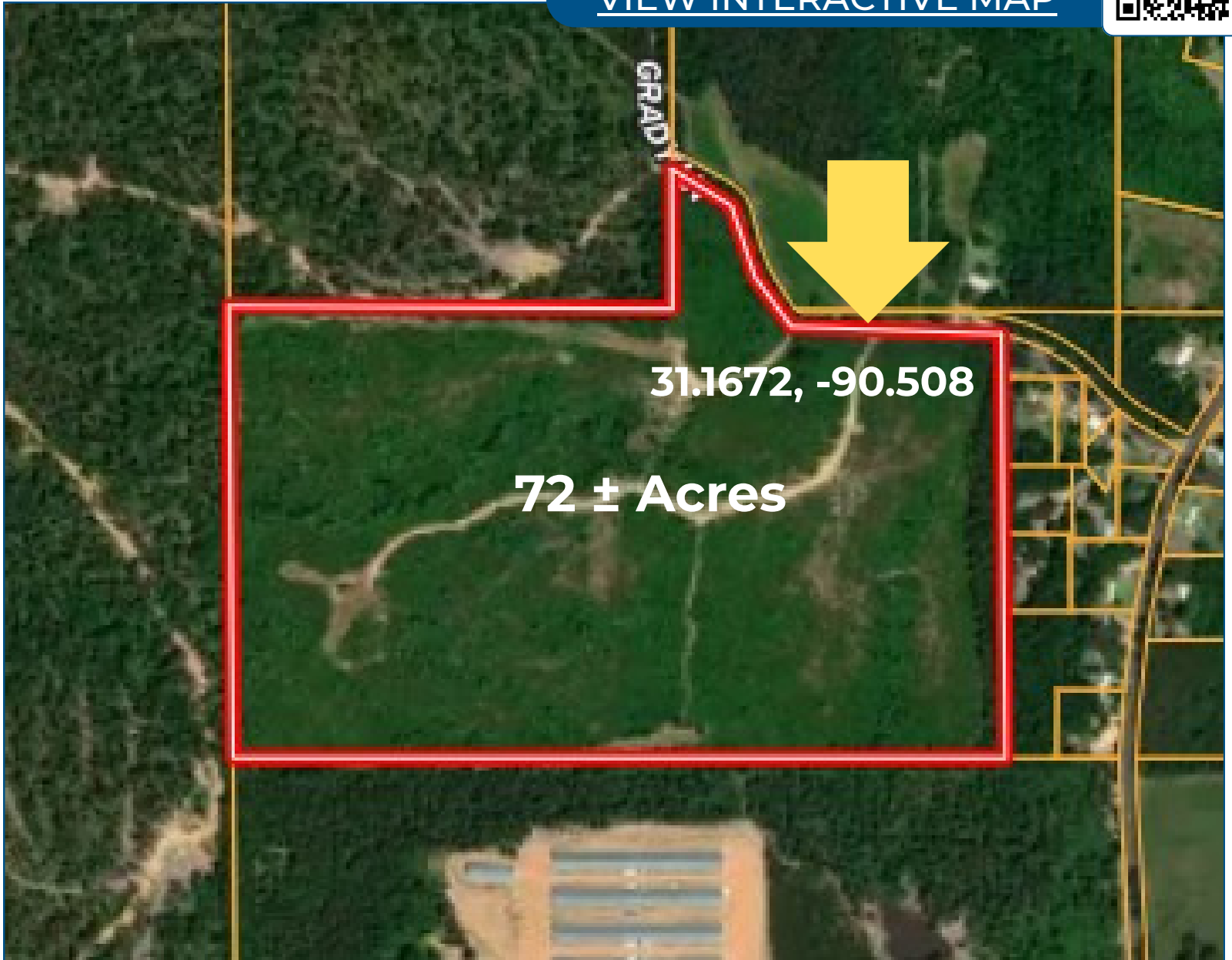
Information is believed to be accurate but not guaranteed.



Aerial Map



[VIEW INTERACTIVE MAP](#)



JOSH WREN

REALTOR®

O: 601.898.2772 | C: 601.497.9440

Josh@TomSmithLand.com

CHAD WILSON

REALTOR®

O: 601.898.2772 | C: 601.750.1970

Chad@TomSmithLand.com

Expect More. Get More.

The Real Estate Experts You Can Trust!



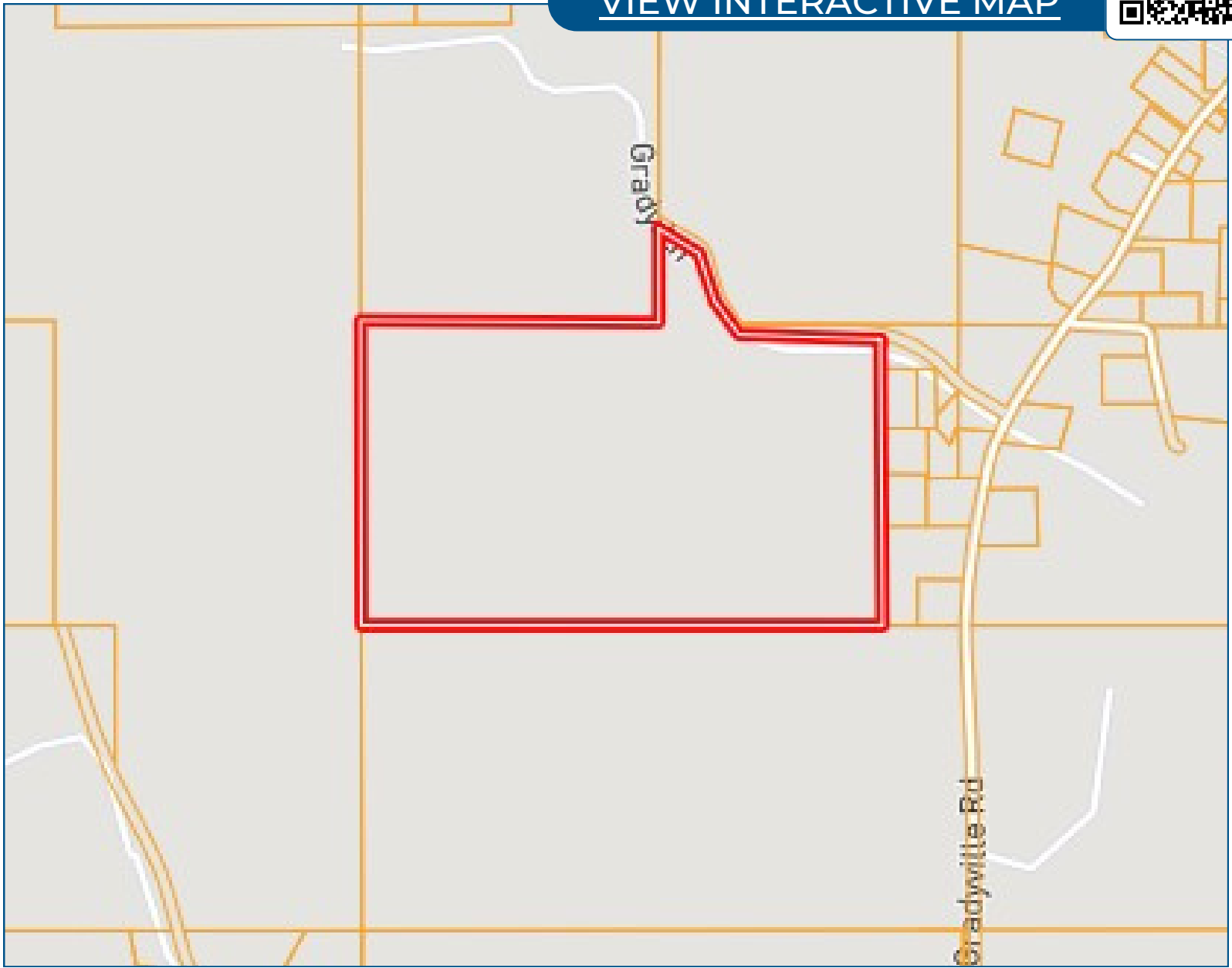
TomSmithLandandHomes.com

Information is believed to be accurate but not guaranteed.

Ownership Map



[VIEW INTERACTIVE MAP](#)



JOSH WREN

REALTOR®

O: 601.898.2772 | C: 601.497.9440

Josh@TomSmithLand.com

CHAD WILSON

REALTOR®

O: 601.898.2772 | C: 601.750.1970

Chad@TomSmithLand.com

Expect More. Get More.

The Real Estate Experts You Can Trust!



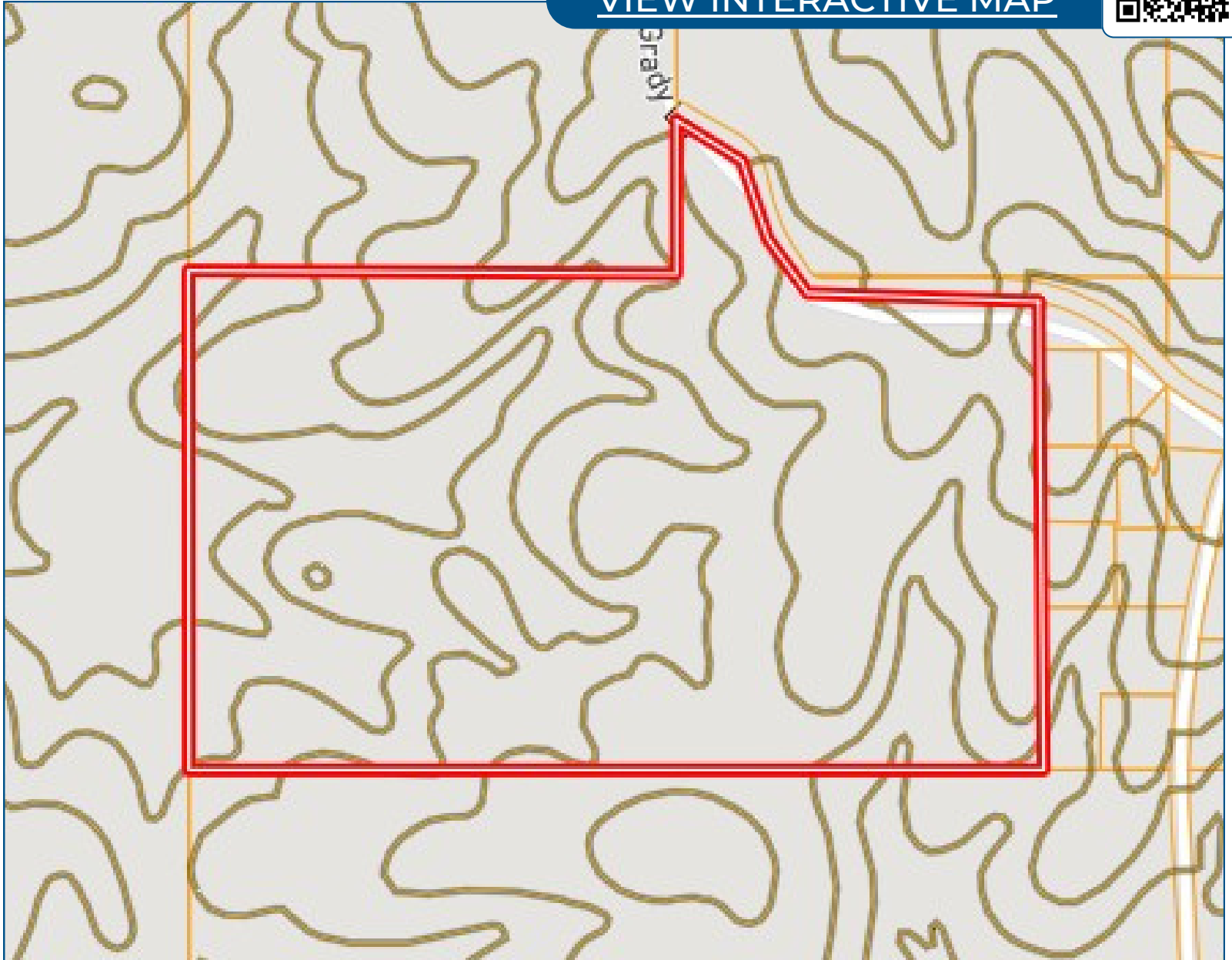
TomSmithLandandHomes.com

Information is believed to be accurate but not guaranteed.

Topo Map



[VIEW INTERACTIVE MAP](#)



JOSH WREN

REALTOR®

O: 601.898.2772 | C: 601.497.9440

Josh@TomSmithLand.com

CHAD WILSON

REALTOR®

O: 601.898.2772 | C: 601.750.1970

Chad@TomSmithLand.com

Expect More. Get More.

The Real Estate Experts You Can Trust!



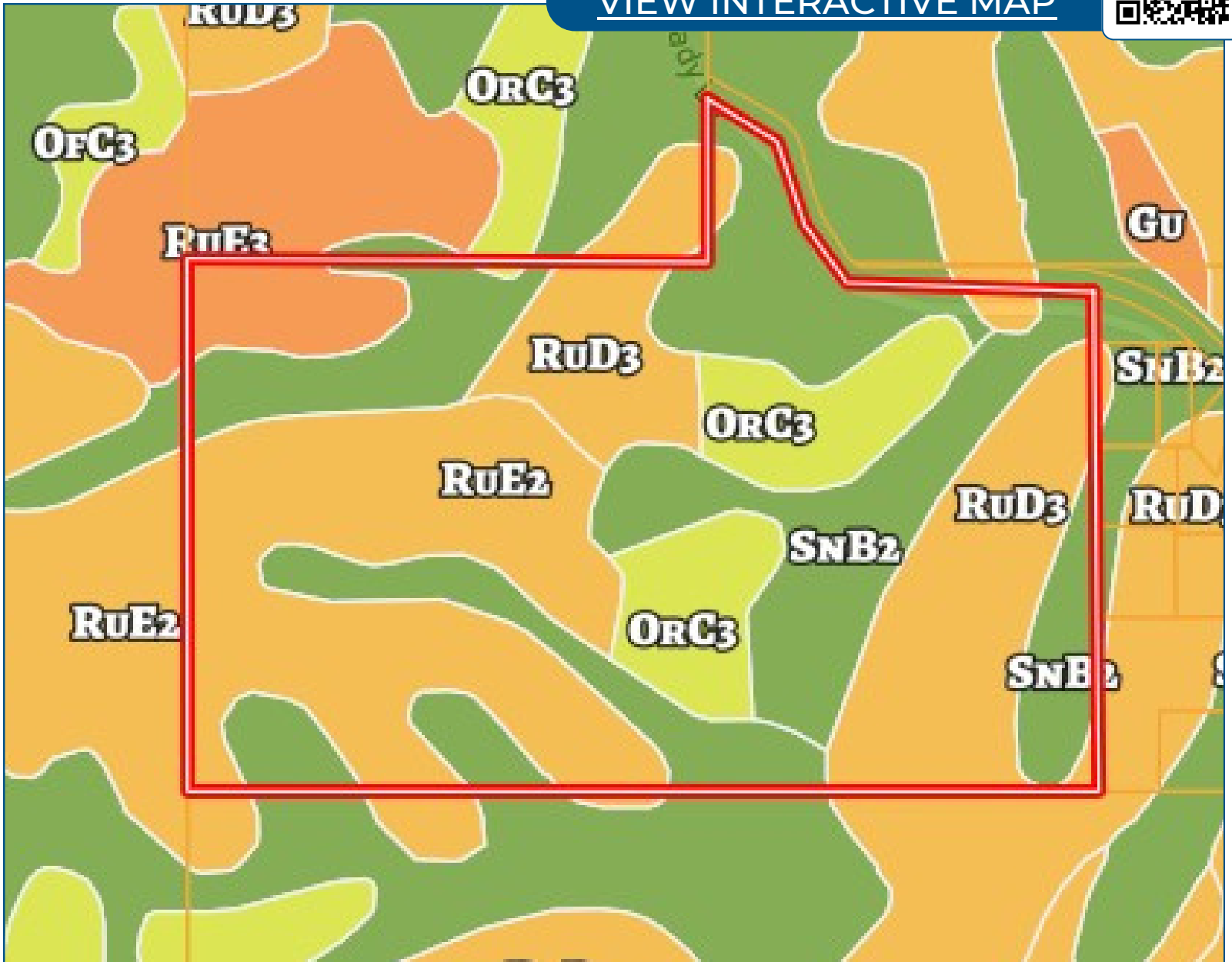
TomSmithLandandHomes.com

Information is believed to be accurate but not guaranteed.

Soil Map



[VIEW INTERACTIVE MAP](#)



JOSH WREN

REALTOR®

O: 601.898.2772 | C: 601.497.9440

Josh@TomSmithLand.com



CHAD WILSON

REALTOR®

O: 601.898.2772 | C: 601.750.1970

Chad@TomSmithLand.com

Expect More. Get More.

The Real Estate Experts You Can Trust!



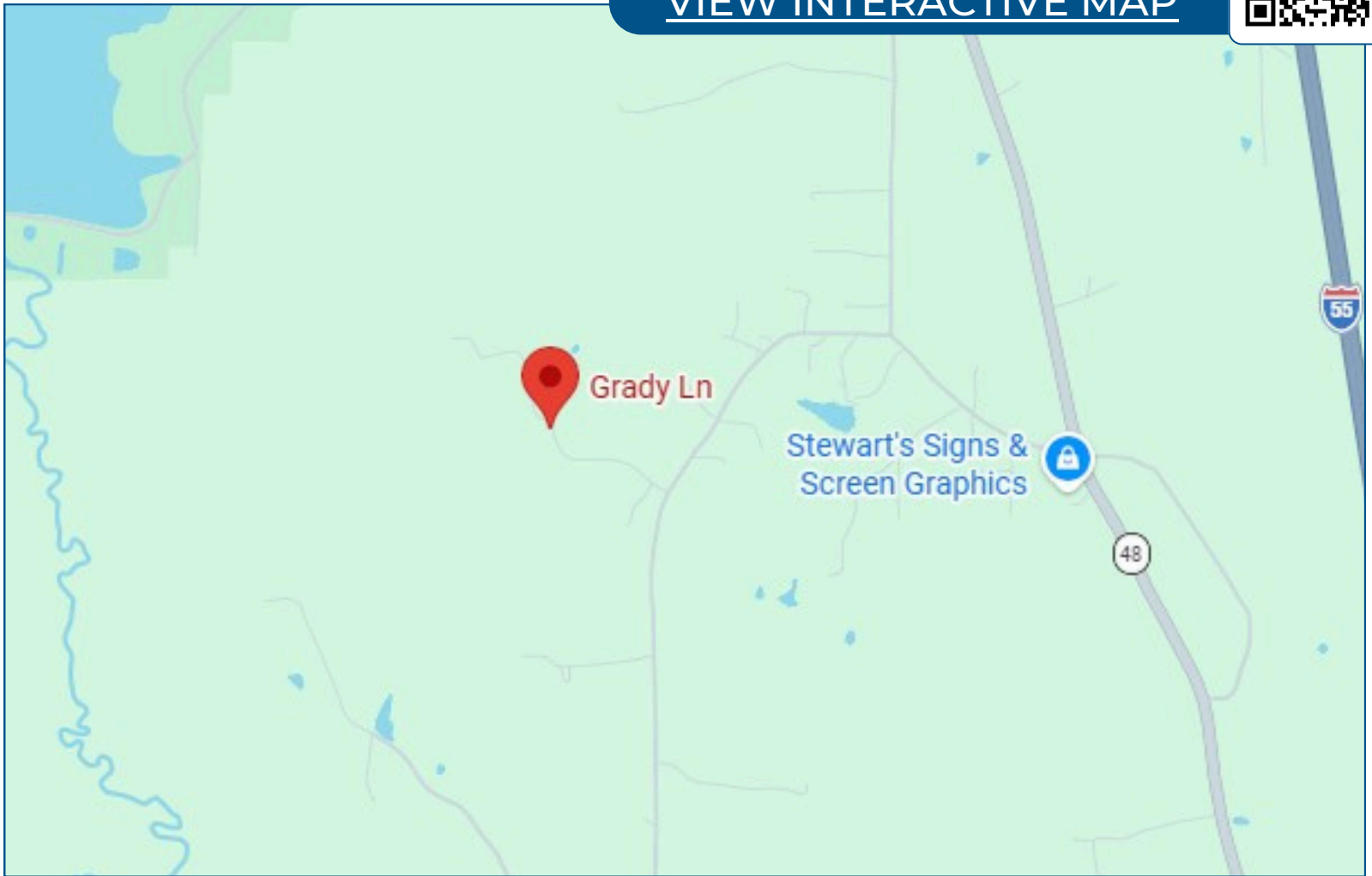
TomSmithLandandHomes.com

Information is believed to be accurate but not guaranteed.

Directional Map



[VIEW INTERACTIVE MAP](#)



From Exit 10 on I-55: Proceed to MS 48-West, go 1.7 miles, then turn left onto Gradyville Lane, proceed for 1.1 miles, then turn right onto Grady Lane. The property will be on your left in 0.3 miles

JOSH WREN

REALTOR®

O: 601.898.2772 | C: 601.497.9440

Josh@TomSmithLand.com



CHAD WILSON

REALTOR®

O: 601.898.2772 | C: 601.750.1970

Chad@TomSmithLand.com

Expect More. Get More.

The Real Estate Experts You Can Trust!



TomSmithLandandHomes.com

Information is believed to be accurate but not guaranteed.