

Hope Hull Transitional Land

880 Wasden Road, Hope Hull, Alabama 36043

Eric Leisy, ALC, GRI
334-657-6707
ericleisy@saundersrealestate.com



Sale Price

\$1,250,000

Offering Summary

Acreage:	86 ± Acres
Price / Acre:	\$14,535
State:	Alabama
City:	Hope Hull
County:	Montgomery
Property Type:	Ranches and Pastureland, Development Land, Hunting and Recreational Land, Timberland

Property Overview

86 Acres in the path of progress – Industrial growth meets natural beauty

Within just three miles of this property, more than \$7 billion in industrial and commercial investment is reshaping the region – and driving tremendous demand for well-located land. This 86-acre tract sits right in the middle of it all.

Positioned in one of Central Alabama's fastest-growing logistics and manufacturing corridors, this land offers a rare combination of strategic location, natural beauty, and long-term investment potential.

Beyond its prime location, this property is simply beautiful land. A mix of open fields and rows of mature trees create a peaceful setting, and a well-stocked pond offers fishing, relaxation, and scenic views. The gently rolling terrain provides excellent drainage and flexibility for future development.

Whether you're looking to enjoy it now – for recreation, weekend retreats, or light agricultural use – or position it as a long-term investment, this property delivers the best of both worlds.

SPECIFICATIONS & FEATURES



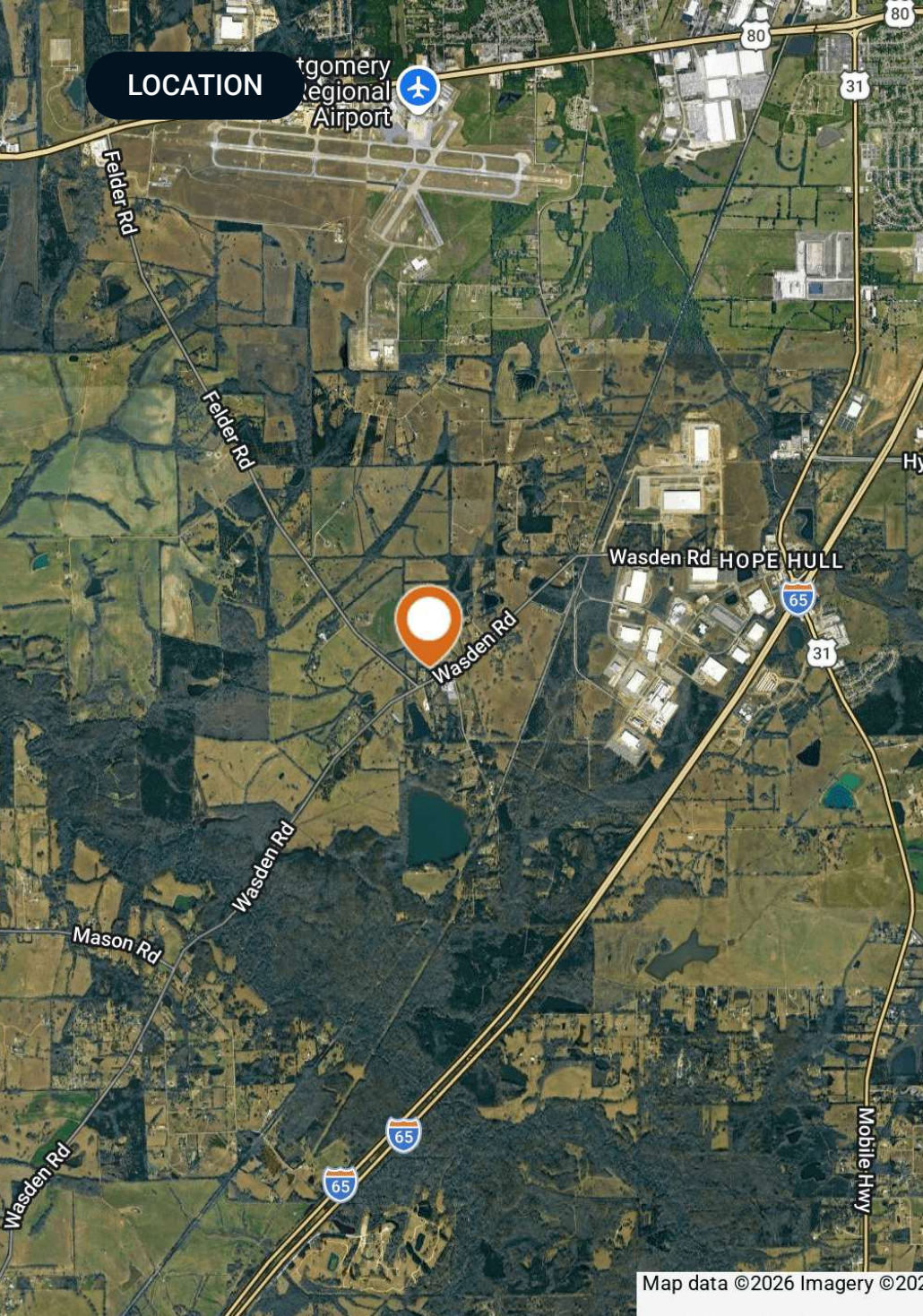
Specifications & Features

Zoning / FLU: AGR-1

Lake Frontage / Water Features: Pond

Nearest Point of Interest:

Located in Hope Hull, Alabama, a bedroom community of Montgomery, Alabama. Points of interest among many include Hyundai Motor Manufacturing Alabama LLC, Meta's new data center, and an industrial park.

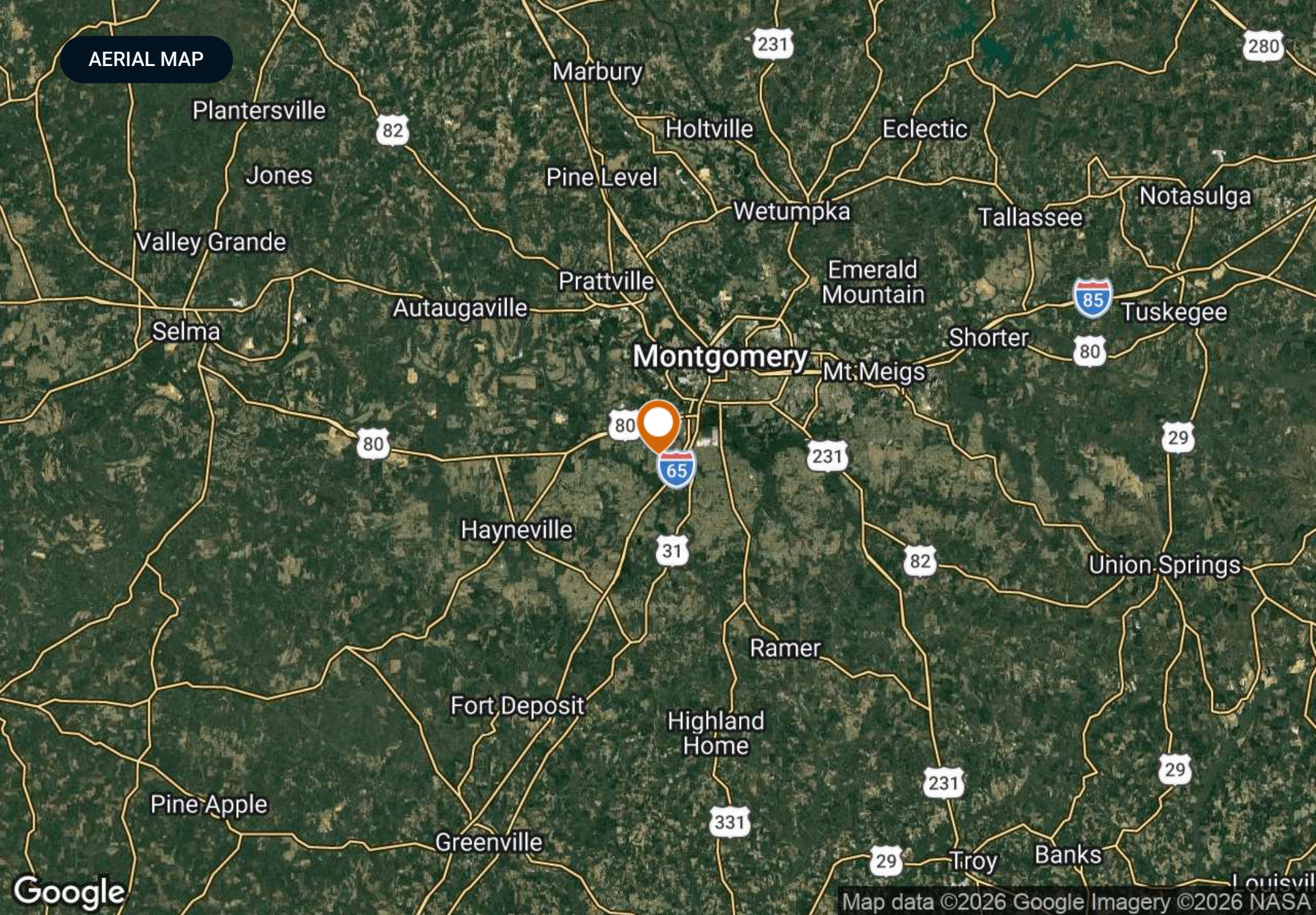


Location & Driving Directions

- Parcel:** 1404200000010000
1404200000016000
- GPS:** 32.2642648, -86.3896725
- Driving Directions:** Contact Eric Leisy for directions.
- Showing Instructions:** Contact Eric Leisy for showing instructions.

Map data ©2026 Imagery ©202

AERIAL MAP



Google

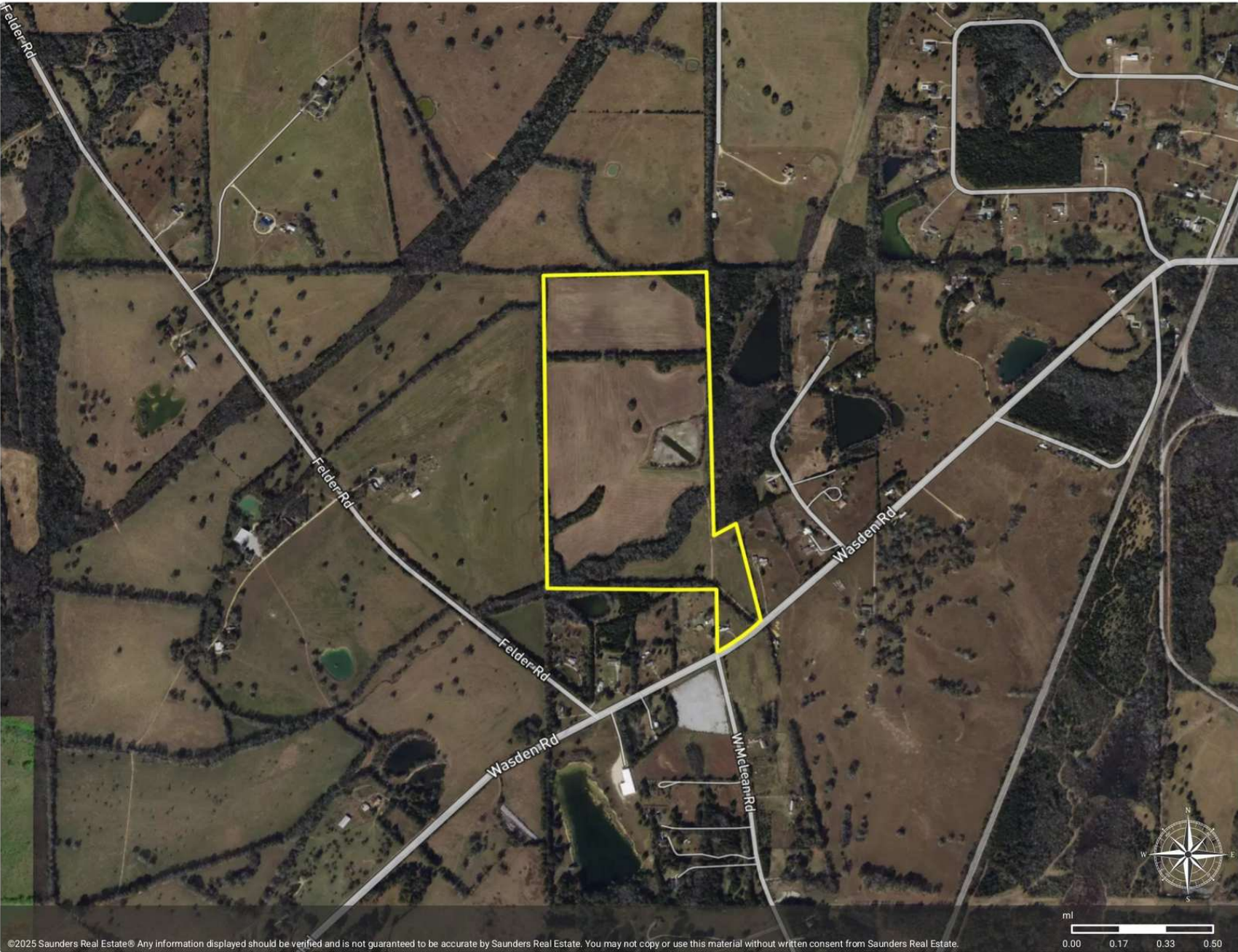
Map data ©2026 Google Imagery ©2026 NASA

PROPERTY OUTLINE



Hope Hull Transitional Land

Polygon



©2025 Saunders Real Estate® Any information displayed should be verified and is not guaranteed to be accurate by Saunders Real Estate. You may not copy or use this material without written consent from Saunders Real Estate.

ADVISOR BIOGRAPHY



Eric Leisy, ALC, GRI

Senior Advisor

ericleisy@saundersrealestate.com

Direct: **877-518-5263 x394** | Cell: **334-657-6707**

Professional Background

Eric Leisy, ALC, GRI is a Senior Advisor at Saunders Real Estate, helping clients navigate the complex process of buying and selling land. With Eric, clients receive trusted guidance, market expertise, and proven results throughout every stage of a land transaction.

With more than 30 years of experience, including land brokerage, commercial lending, appraisal, development, and investment analysis, Eric brings a comprehensive perspective to each property. He brings a strong understanding of the factors that influence land value and potential, such as timber characteristics, soil types, wildlife habitat, agricultural use, access, and overall feasibility, helping clients better understand their options and make confident decisions. Eric's experience developing lifestyle centers, power centers, and retail sites like Walgreens also provides insight into commercial and residential development potential.

Eric is a graduate of the University of Alabama with a degree in Corporate Finance and Investments, giving him a strong foundation in financial analysis and investment evaluation. He has earned recognition as a seven-time national APEX Award recipient through the REALTORS® Land Institute (RLI) and holds the Accredited Land Consultant (ALC) and Graduate, REALTOR® Institute (GRI) designations. These honors reflect his ability to close complex transactions and deliver measurable results. In 2025, he was named Land Realtor of the Year for the RLI Alabama Chapter.

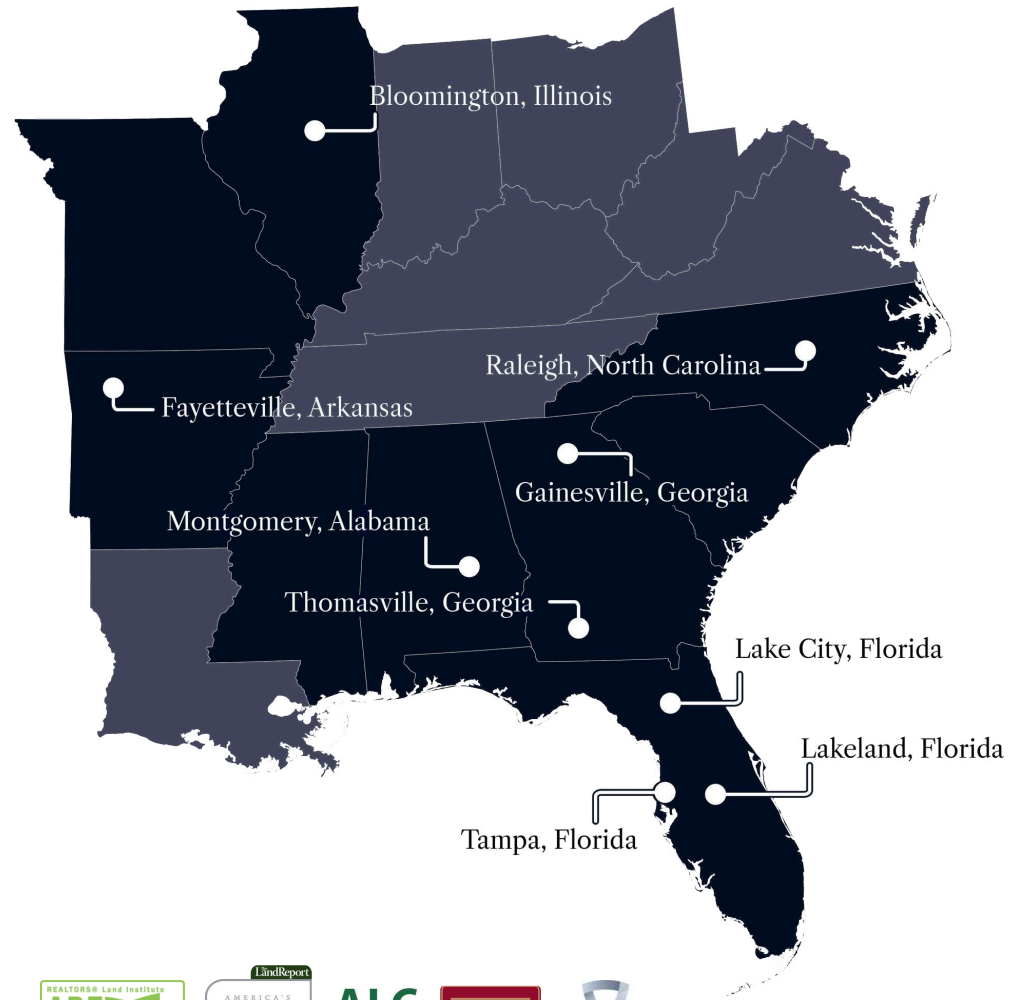
He has served in national and state leadership roles with the REALTORS® Land Institute and remains active with the Alabama Forestry Association, Alabama Wildlife Federation, and National Association of REALTORS®. These networks provide access to potential buyers, off-market opportunities, and market insights that help his clients.

Eric works with families of legacy farms and estates, heirs managing inherited property, farmers and timber investors, developers and planners, conservation-focused landowners, and recreational property buyers and sellers. Through acquisition or disposition, he combines financial insight, transaction expertise, and practical experience to guide clients through each decision, helping them achieve their goals.

Eric has been married to Melissa for 40 years. His hobbies, which include vegetable gardening, fly fishing, and turkey hunting, keep him outdoors and closely connected to the land. Playing rugby at the University of Alabama, and later coaching youth sports, taught him teamwork, discipline, and strategy: skills he applies to complex negotiations and multi-party transactions to reach successful outcomes.



At Saunders Real Estate, we deliver full-service real estate solutions, built on more than 30 years of trusted experience. Our dedicated teams offer tailored guidance backed by deep regional insight and a proven track record. We believe that successful outcomes start with strong relationships built on trust and a shared commitment to your goals.



877-518-5263 • info@saundersrealestate.com



©2026 Saunders Real Estate, LLC. All rights reserved. The information contained in this communication is strictly confidential. This information has been obtained from sources believed to be reliable but has not been verified. NO WARRANTY OR REPRESENTATION, EXPRESS OR IMPLIED, IS MADE AS TO THE CONDITION OF THE PROPERTY (OR PROPERTIES) REFERENCED HEREIN OR AS TO THE ACCURACY OR COMPLETENESS OF THE INFORMATION CONTAINED HEREIN, AND SAME IS SUBMITTED SUBJECT TO ERRORS, OMISSIONS, CHANGE OF PRICE, RENTAL OR OTHER CONDITIONS, WITHDRAWAL WITHOUT NOTICE, AND TO ANY SPECIAL LISTING CONDITIONS IMPOSED BY THE PROPERTY OWNER(S). ANY PROJECTIONS, OPINIONS OR ESTIMATES ARE SUBJECT TO UNCERTAINTY AND DO NOT SIGNIFY CURRENT OR FUTURE PROPERTY PERFORMANCE.