



# Denver Road 80

0 Denver Road, Dadeville, Alabama 36853

---

Eric Leisy, ALC, GRI  
334-657-6707  
ericleisy@saundersrealestate.com

## PROPERTY OVERVIEW



### Sale Price

\$360,000

### Offering Summary

Acreage:	80 Acres
Price / Acre:	\$4,500
State:	Alabama
City:	Dadeville
County:	Tallapoosa
Property Type:	Hunting and Recreational Land Timberland Acreage and Estates

### Property Overview

80 acres of privacy and potential – Minutes from the Tallapoosa River and Lake Martin

If you've been looking for the perfect blend of convenience and seclusion, this 80-acre property checks all the boxes. Located just minutes from the Tallapoosa River and a short 15–20 minute drive from Lake Martin—one of the most popular recreational lakes in the country—this land offers the best of both worlds.

Despite being close to grocery stores, restaurants, and even Auburn, once you're on the property, you feel like you're a million miles away. It's peaceful, private, and full of natural beauty.

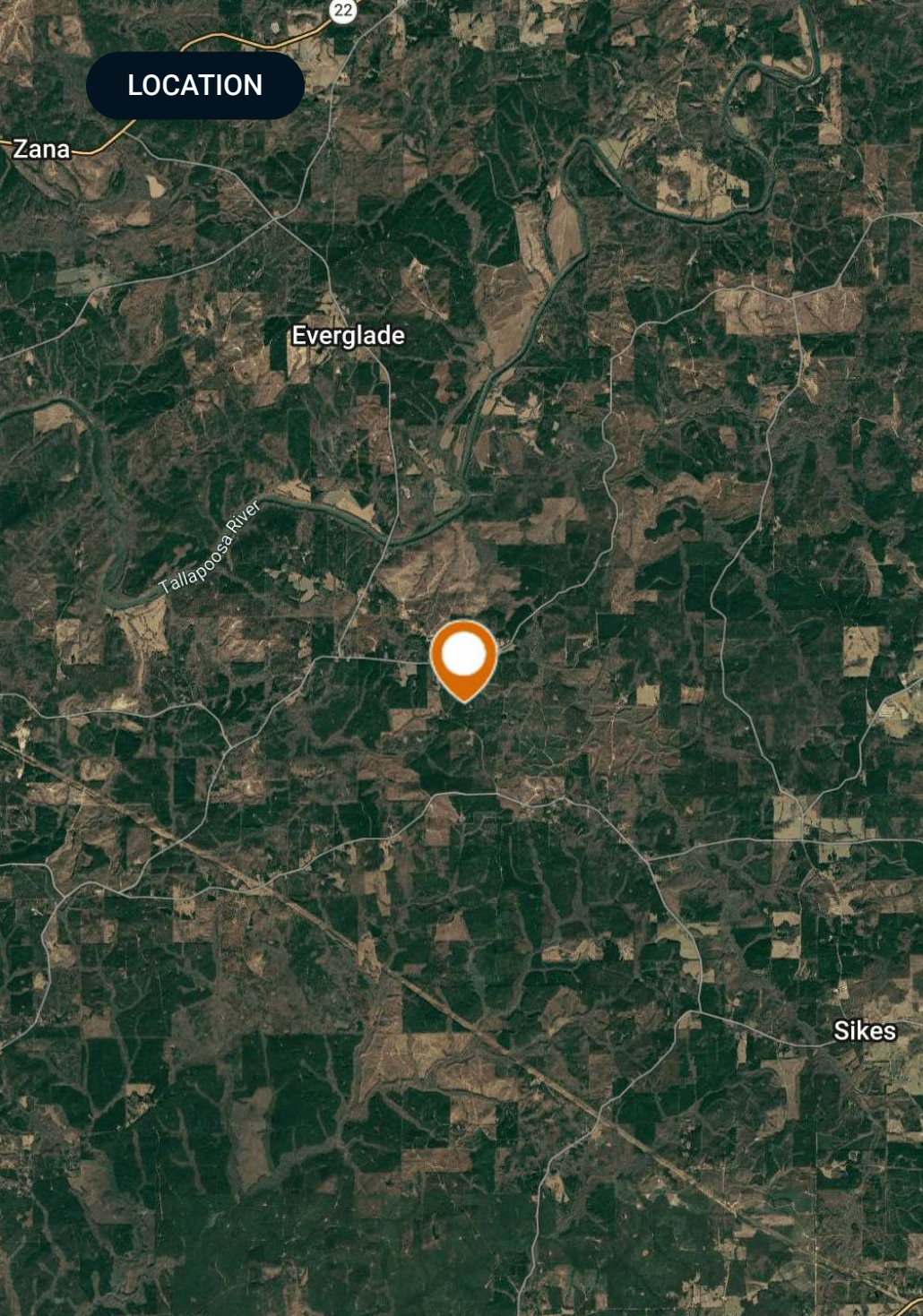
The land features a healthy pine plantation that will be ready for thinning in the next couple of years, creating immediate and long-term value. A couple of food plots are already in place, and the hunting for deer and turkey here is excellent. Whether you're looking for a recreational retreat, hunting tract, or a homesite in a prime location, this property deserves a look.

## SPECIFICATIONS & FEATURES



## Specifications & Features

<b>Taxes &amp; Tax Year:</b>	2025 taxes were \$205.00
<b>Nearest Point of Interest:</b>	Located approximately 15 miles from beautiful Lake Martin and only 20 miles from Auburn, Alabama.
<b>Current Use:</b>	Recreation and Timber. This land would also make a nice farmstead.



# Location & Driving Directions

Parcel: 62-08-08-27-0-000-021.000

GPS: 32.946735, -85.633671

Driving Directions: Contact Eric Leisy for directions

Showing Instructions: Contact Eric Leisy for showing instructions.

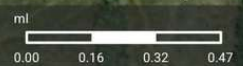
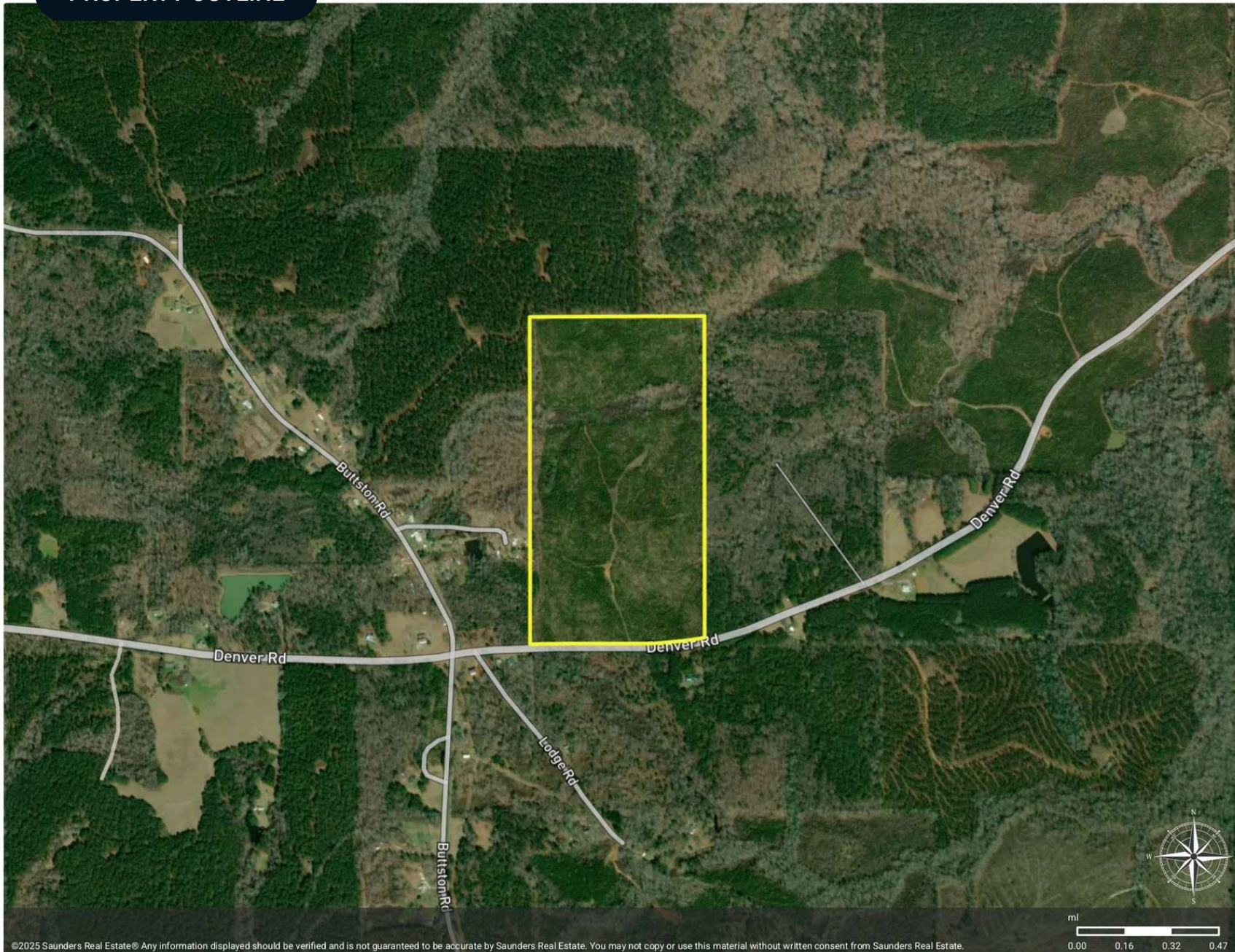


PROPERTY OUTLINE



Denver Road 80

Polygon



©2025 Saunders Real Estate® Any information displayed should be verified and is not guaranteed to be accurate by Saunders Real Estate. You may not copy or use this material without written consent from Saunders Real Estate.

ADDITIONAL PHOTOS



## ADVISOR BIOGRAPHY



### Eric Leisy, ALC, GRI

Senior Advisor

[ericleisy@saundersrealestate.com](mailto:ericleisy@saundersrealestate.com)

Direct: **877-518-5263 x394** | Cell: **334-657-6707**

## Professional Background

Eric Leisy, ALC, GRI is a Senior Advisor at Saunders Real Estate, helping clients navigate the complex process of buying and selling land. With Eric, clients receive trusted guidance, market expertise, and proven results throughout every stage of a land transaction.

With more than 30 years of experience, including land brokerage, commercial lending, appraisal, development, and investment analysis, Eric brings a comprehensive perspective to each property. He brings a strong understanding of the factors that influence land value and potential, such as timber characteristics, soil types, wildlife habitat, agricultural use, access, and overall feasibility, helping clients better understand their options and make confident decisions. Eric's experience developing lifestyle centers, power centers, and retail sites like Walgreens also provides insight into commercial and residential development potential.

Eric is a graduate of the University of Alabama with a degree in Corporate Finance and Investments, giving him a strong foundation in financial analysis and investment evaluation. He has earned recognition as a seven-time national APEX Award recipient through the REALTORS® Land Institute (RLI) and holds the Accredited Land Consultant (ALC) and Graduate, REALTOR® Institute (GRI) designations. These honors reflect his ability to close complex transactions and deliver measurable results. In 2025, he was named Land Realtor of the Year for the RLI Alabama Chapter.

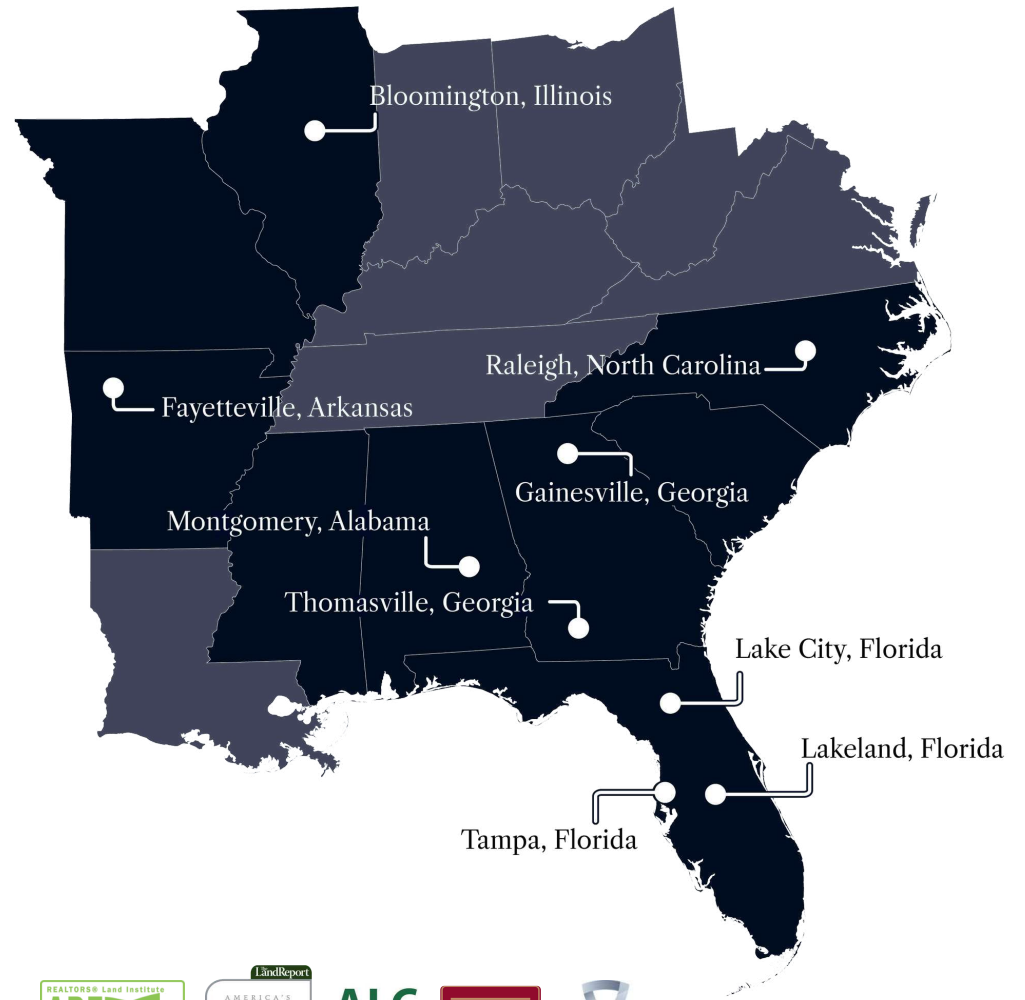
He has served in national and state leadership roles with the REALTORS® Land Institute and remains active with the Alabama Forestry Association, Alabama Wildlife Federation, and National Association of REALTORS®. These networks provide access to potential buyers, off-market opportunities, and market insights that help his clients.

Eric works with families of legacy farms and estates, heirs managing inherited property, farmers and timber investors, developers and planners, conservation-focused landowners, and recreational property buyers and sellers. Through acquisition or disposition, he combines financial insight, transaction expertise, and practical experience to guide clients through each decision, helping them achieve their goals.

Eric has been married to Melissa for 40 years. His hobbies, which include vegetable gardening, fly fishing, and turkey hunting, keep him outdoors and closely connected to the land. Playing rugby at the University of Alabama, and later coaching youth sports, taught him teamwork, discipline, and strategy: skills he applies to complex negotiations and multi-party transactions to reach successful outcomes.



At Saunders Real Estate, we deliver full-service real estate solutions, built on more than 30 years of trusted experience. Our dedicated teams offer tailored guidance backed by deep regional insight and a proven track record. We believe that successful outcomes start with strong relationships built on trust and a shared commitment to your goals.



877-518-5263 • [info@saundersrealestate.com](mailto:info@saundersrealestate.com)



©2026 Saunders Real Estate, LLC. All rights reserved. The information contained in this communication is strictly confidential. This information has been obtained from sources believed to be reliable but has not been verified. NO WARRANTY OR REPRESENTATION, EXPRESS OR IMPLIED, IS MADE AS TO THE CONDITION OF THE PROPERTY (OR PROPERTIES) REFERENCED HEREIN OR AS TO THE ACCURACY OR COMPLETENESS OF THE INFORMATION CONTAINED HEREIN, AND SAME IS SUBMITTED SUBJECT TO ERRORS, OMISSIONS, CHANGE OF PRICE, RENTAL OR OTHER CONDITIONS, WITHDRAWAL WITHOUT NOTICE, AND TO ANY SPECIAL LISTING CONDITIONS IMPOSED BY THE PROPERTY OWNER(S). ANY PROJECTIONS, OPINIONS OR ESTIMATES ARE SUBJECT TO UNCERTAINTY AND DO NOT SIGNIFY CURRENT OR FUTURE PROPERTY PERFORMANCE.