

For Sale

MOUNT WASHINGTON ROAD



TRACTS RANGING FROM
30.7 ACRES TO 66 ACRES

173.8 ACRES VACANT LAND

HIGHLAND COUNTY, OH SELLING IN 4 TRACTS



Call
Mark
Wilson

937-402-1961

or
Brandon
Wilson

937-763-1993



WILSON

NATIONAL

A REAL ESTATE & AUCTION GROUP

www.wilnat.com

800-450-3440

66 ACRES VACANT LAND HIGHLAND COUNTY



66 acres gently rolling parcel with panoramic view. See all the way to Hillsboro. Terrific building spot and lifestyle farm. Potential 43 acres tillable with balance in woods. 173.39' frontage on Mt. Washington Road. A very nice tract of land with many potential uses. Building restrictions apply.

\$547,500



41.60 ACRES VACANT LAND HIGHLAND COUNTY



41.5 acres. Nice level to gently rolling parcel of predominately open land with approx. 37 acres tillable. Nice farm pond included. Great tract for lifestyle farm with multiple locations to build your home. 448' total frontage on Mt. Washington Road.

Building restrictions apply.

\$375,000



35.5 ACRES VACANT LAND HIGHLAND COUNTY



35.5 acres. A tremendous parcel with open tillable land and woods. 1,766' of road frontage and multiple locations for a home. Excellent for creating your own lifestyle farm and hunting.

Building restrictions apply.

\$337,500



30.7 ACRES VACANT LAND HIGHLAND COUNTY



A great place to build a home & go hunting. Approximately 18 acres of woods & 12 acres of open land. This parcel has rolling land & is excellent for recreational/hunting with an abundance of wildlife or build a home & create your own lifestyle farm.

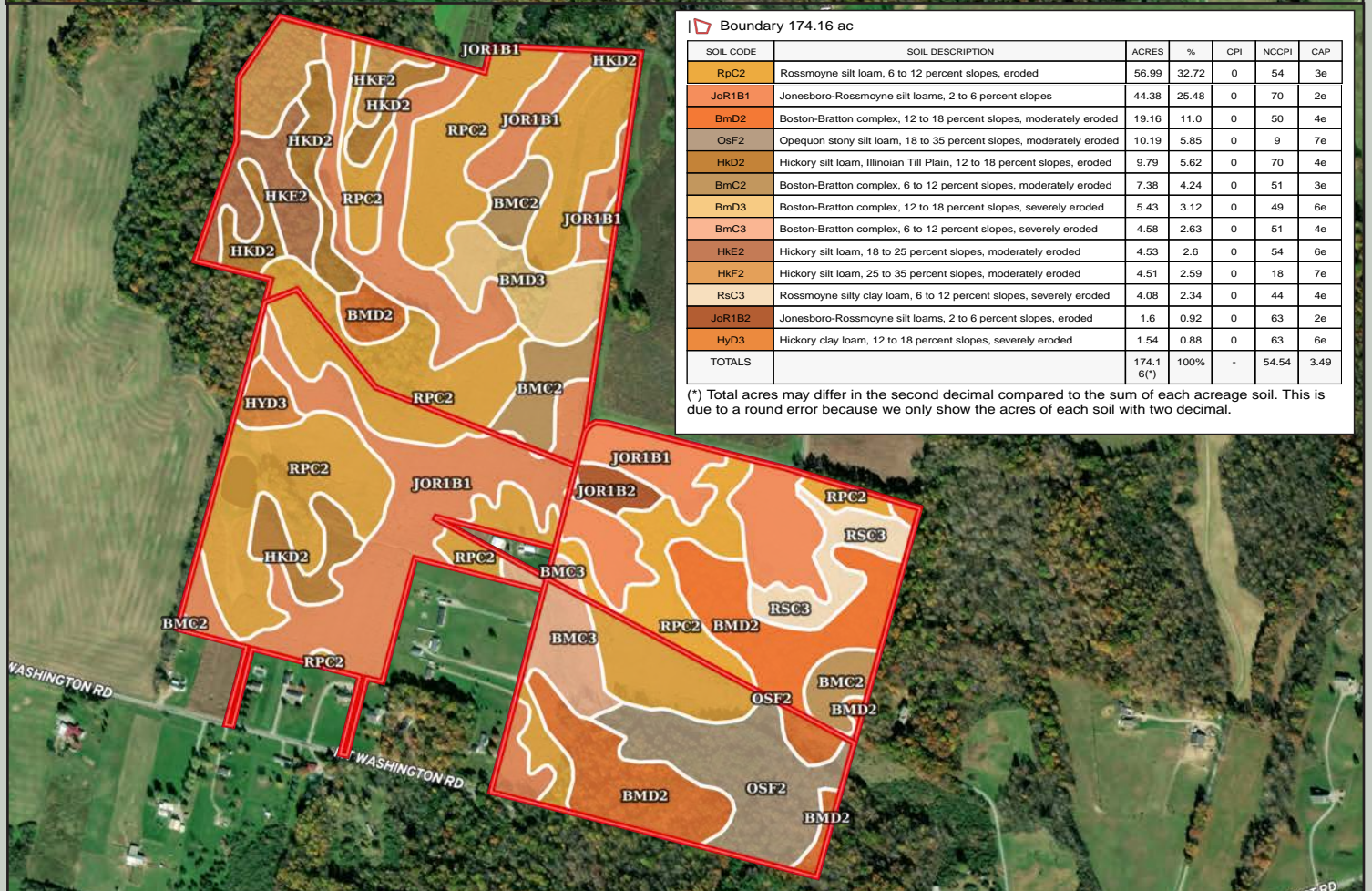
1020.69' frontage on Mt.

Washington Road.

Building restrictions apply.

290,000





Boundary 174.16 ac

SOIL CODE	SOIL DESCRIPTION	ACRES	%	CPI	NCCPI	CAP
RpC2	Rossmoyne silt loam, 6 to 12 percent slopes, eroded	56.99	32.72	0	54	3e
JoR1B1	Jonesboro-Rossmoyne silt loams, 2 to 6 percent slopes	44.38	25.48	0	70	2e
BmD2	Boston-Bratton complex, 12 to 18 percent slopes, moderately eroded	19.16	11.0	0	50	4e
OsF2	Opequon stony silt loam, 18 to 35 percent slopes, moderately eroded	10.19	5.85	0	9	7e
HkD2	Hickory silt loam, Illinoian Till Plain, 12 to 18 percent slopes, eroded	9.79	5.62	0	70	4e
BmC2	Boston-Bratton complex, 6 to 12 percent slopes, moderately eroded	7.38	4.24	0	51	3e
BmD3	Boston-Bratton complex, 12 to 18 percent slopes, severely eroded	5.43	3.12	0	49	6e
BmC3	Boston-Bratton complex, 6 to 12 percent slopes, severely eroded	4.58	2.63	0	51	4e
HkE2	Hickory silt loam, 18 to 25 percent slopes, moderately eroded	4.53	2.6	0	54	6e
HkF2	Hickory silt loam, 25 to 35 percent slopes, moderately eroded	4.51	2.59	0	18	7e
Rsc3	Rossmoyne silty clay loam, 6 to 12 percent slopes, severely eroded	4.08	2.34	0	44	4e
JoR1B2	Jonesboro-Rossmoyne silt loams, 2 to 6 percent slopes, eroded	1.6	0.92	0	63	2e
HyD3	Hickory clay loam, 12 to 18 percent slopes, severely eroded	1.54	0.88	0	63	6e
TOTALS		174.16(*)	100%	-	54.54	3.49

(*) Total acres may differ in the second decimal compared to the sum of each acreage soil. This is due to a round error because we only show the acres of each soil with two decimal.

173.8 TOTAL ACRES



WILSON
NATIONAL
A REAL ESTATE & AUCTION GROUP

Call Mark Wilson
937-402-1961
or Brandon Wilson
937-763-1993