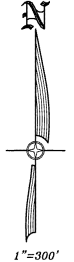
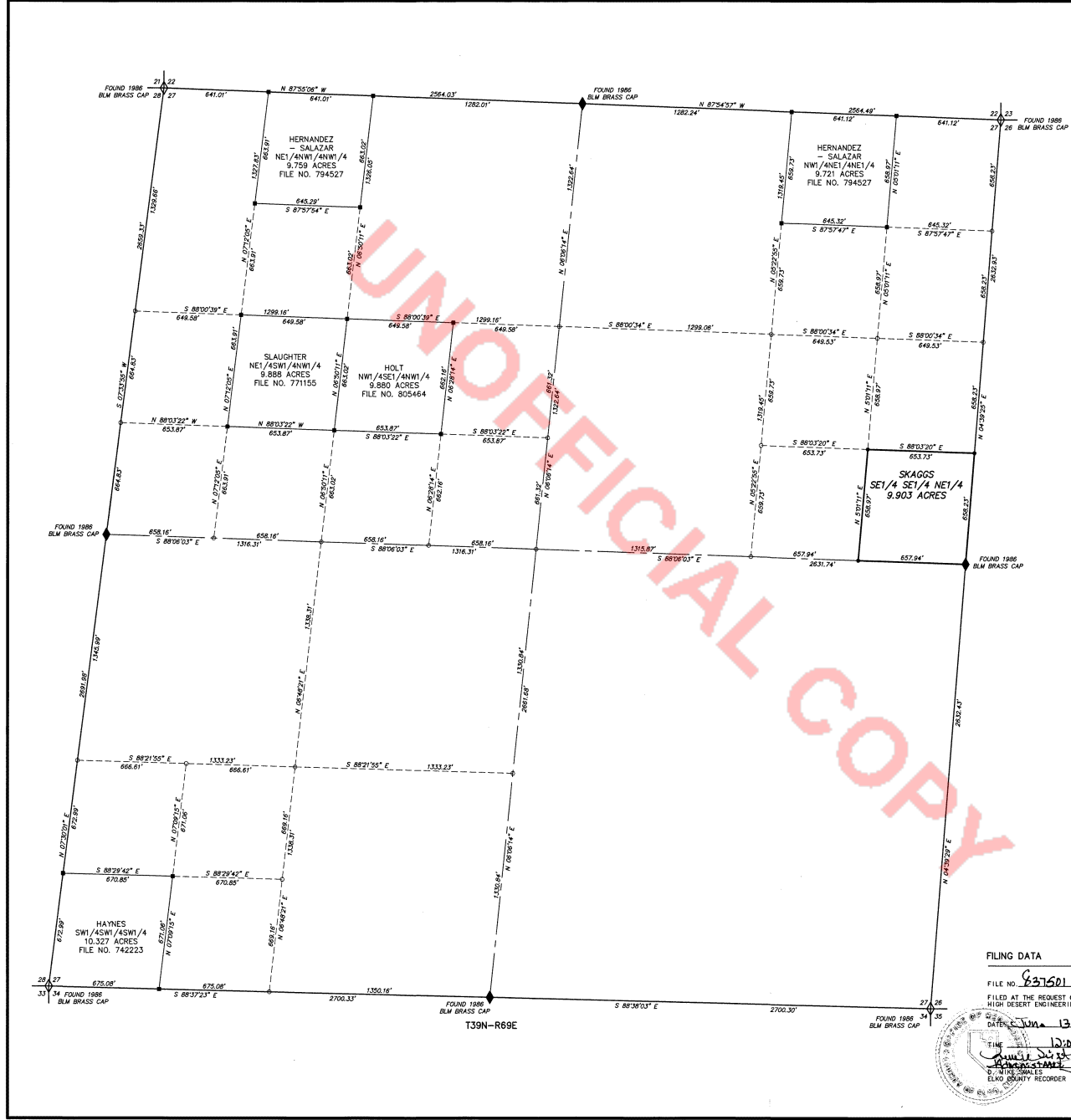


3818



**SURVEYOR'S CERTIFICATE**

I, ROBERT THIBAUT, A PROFESSIONAL LAND SURVEYOR LICENSED IN THE STATE OF NEVADA, CERTIFY THAT:

1. THIS PLAT REPRESENTS THE RESULTS OF A SURVEY CONDUCTED UNDER MY DIRECT SUPERVISION AT THE INSTANCE OF BRANDON A. SKAGOS.
2. THE LANDS SURVEYED LIE WITHIN SECTION 27, T.39 N., R.69 E., M.D.B. & M., AND THE SURVEY WAS COMPLETED ON JUNE 5, 2024.
3. THE MONUMENTS DEPICTED ON THE PLAT ARE OF THE CHARACTER SHOWN, AND OCCUPY THE POSITIONS INDICATED AND ARE OF SUFFICIENT NUMBER AND DURABILITY.

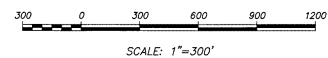


**NOTES:**

- 1) THE TOTAL SURVEYED AREA OF THIS MAP EQUALS 9.903 ACRES.
- 2) BASIS OF BEARINGS: THE LINE BETWEEN THE FOUND SOUTHWEST CORNER AND SOUTH 1/4 CORNER AS SHOWN HEREON AND TAKEN AS S 88° 37' 25" E.

**LEGEND**

- ◊ = FOUND SECTION CORNER AS NOTED.
- ◆ = FOUND 1/4 CORNER AS NOTED.
- = FOUND 5/8" REBAR WITH CAP MARKED PLS 6203.
- = SET 5/8" REBAR WITH CAP MARKED PLS 20723.
- = CALCULATED POINT, NOTHING FOUND, NOTHING SET.



**FILING DATA**

FILE NO. 637501  
 FILED AT THE REQUEST OF  
 HIGH DESERT ENGINEERING  
 DATE June 13, 2024



**RECORD OF SURVEY**  
 FOR  
**BRANDON A. SKAGOS**  
 IN  
 SECTION 27, T.39 N., R.69 E., M.D.B. & M.  
 ELKO COUNTY, NEVADA

**HIGH DESERT ENGINEERING** 640 IDAHO STREET  
 ELKO, NEVADA 89601  
 (775) 738-4053

224042

3818