

645 South Columbus Avenue

Louisville, MS

Winston County



\$290,000



Expect More. Get More.

**DOYES
HOLLAND**
REALTOR®

Office: 662.268.6333
Cell: 662.312.2165

DHolland@TomSmithLand.com

**A Real Estate Expert
You Can Trust!**



TomSmithLandandHomes.com

Information is believed to be accurate but not guaranteed.

Property Information

Location:

- Louisville, MS

Property Use:

- Residential

Coordinates:

- 33.1193, -89.05375

Property Highlights

- 0.99± Acres
- 3,449± Sq. Feet, 5 BR/3B with a heated and cooled living space.
- Updated kitchen, sunroom sitting area, screened in back porch
- Property also features a fresh water 18x36 foot pool
- Covered carport with separate storage room and firepit area
- Shaded backyard with partial privacy fence



Expect More. Get More.

**DOYES
HOLLAND**
REALTOR®

Office: 662.268.6333
Cell: 662.312.2165

DHolland@TomSmithLand.com

**A Real Estate Expert
You Can Trust!**



The Residence

3,449± Sq. Feet

Step into timeless character and exceptional versatility with this beautifully maintained historic home, formerly operated as a successful Airbnb. Located just three blocks from Downtown Louisville, Mississippi, this spacious one-story residence offers a rare blend of charm, comfort, and income potential. The home features 5 bedrooms, 3 full bathrooms, and 3,449± square feet of heated and cooled living space. Original hardwood floors run throughout, adding warmth and authenticity to every room. The expansive layout includes a large main living area plus a separate second living space, ideal for entertaining, hosting guests, or accommodating multi-generational living. The updated kitchen is both functional and inviting, offering abundant cabinetry and a separate dining area. Additional interior highlights include a sunroom sitting area, perfect for relaxing year-round and enjoying natural light.



**DOYES
HOLLAND**
REALTOR®

Office: 662.268.6333

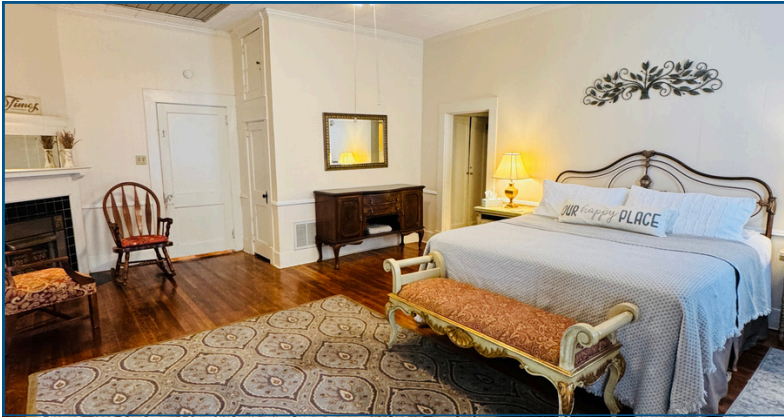
Cell: 662.312.2165

DHolland@TomSmithLand.com



Expect More. Get More.

The Residence



**DOYES
HOLLAND**
REALTOR®

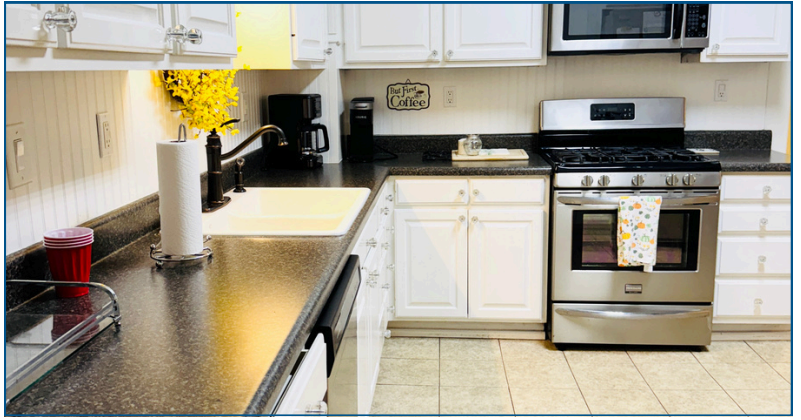
Office: 662.268.6333
Cell: 662.312.2165

DHolland@TomSmithLand.com

**Tom
Smith
LAND AND
HOMES**

Expect More. Get More.

The Residence



**DOYES
HOLLAND**
REALTOR®

Office: 662.268.6333

Cell: 662.312.2165

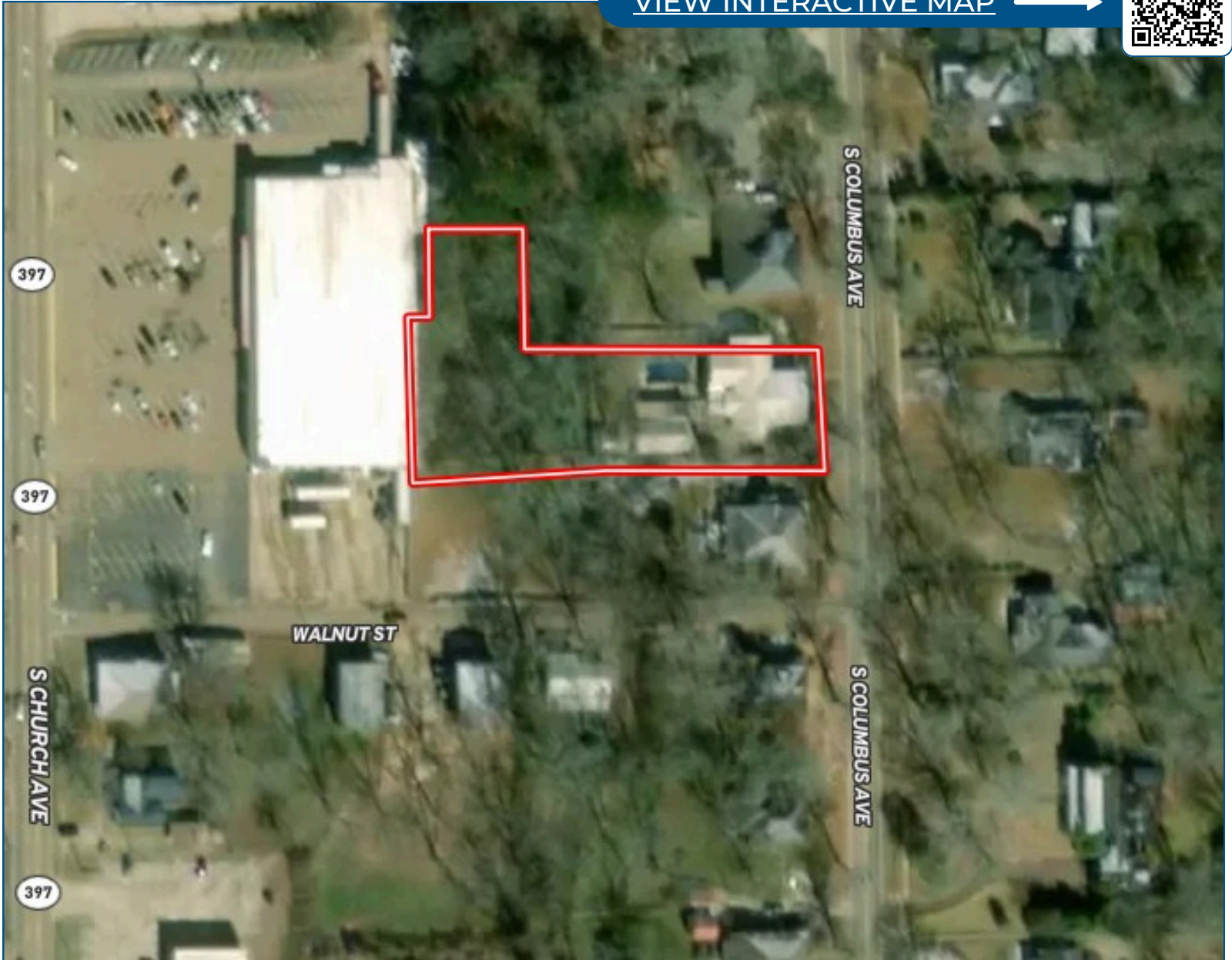
DHolland@TomSmithLand.com

**Tom
Smith
LAND AND
HOMES**

Expect More. Get More.

Aerial Map

[VIEW INTERACTIVE MAP](#) →



**DOYES
HOLLAND**
REALTOR®

Office: 662.268.6333
Cell: 662.312.2165

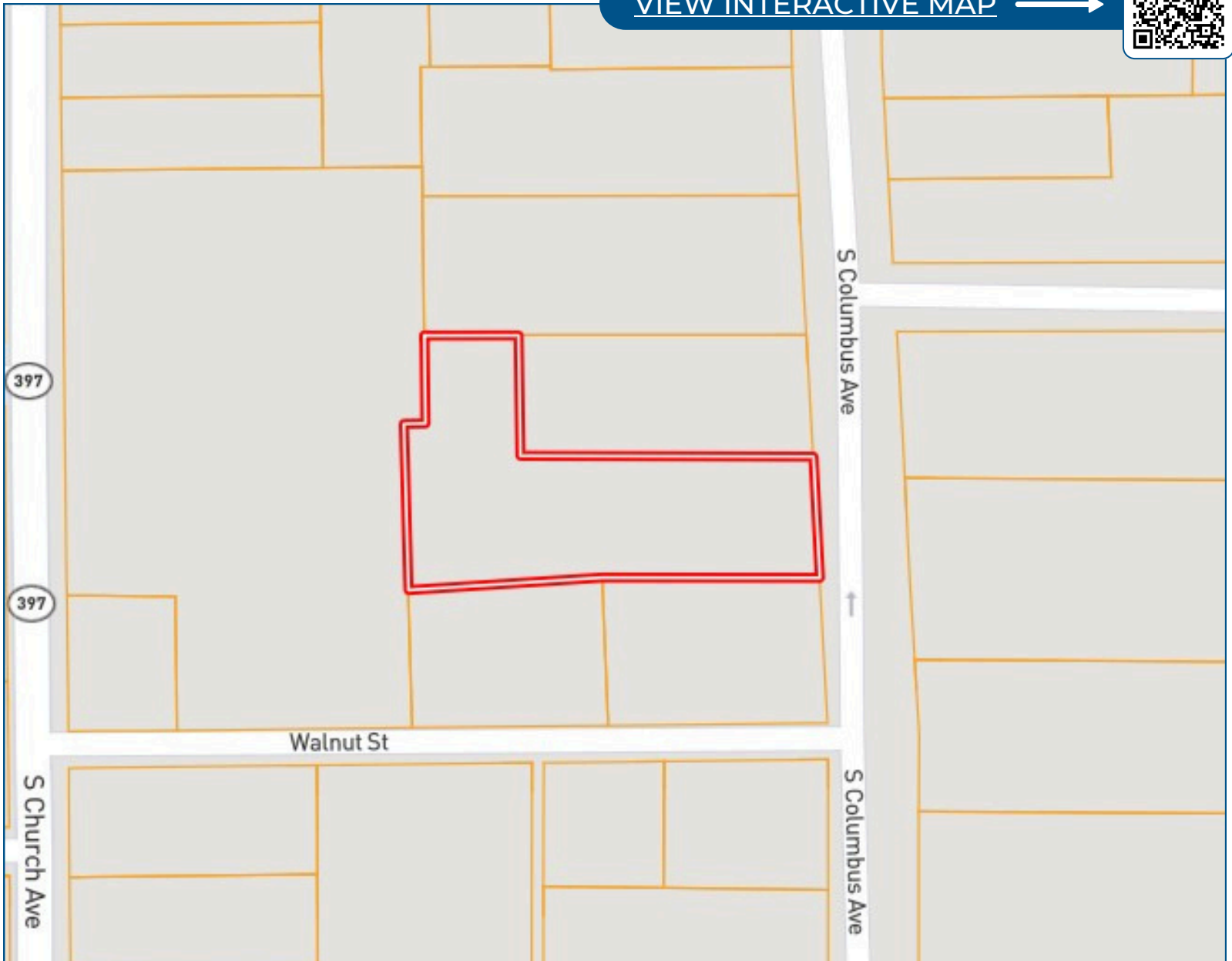
DHolland@TomSmithLand.com



Expect More. Get More.

Ownership Map

[VIEW INTERACTIVE MAP](#) →



**DOYES
HOLLAND**
REALTOR®

Office: 662.268.6333
Cell: 662.312.2165

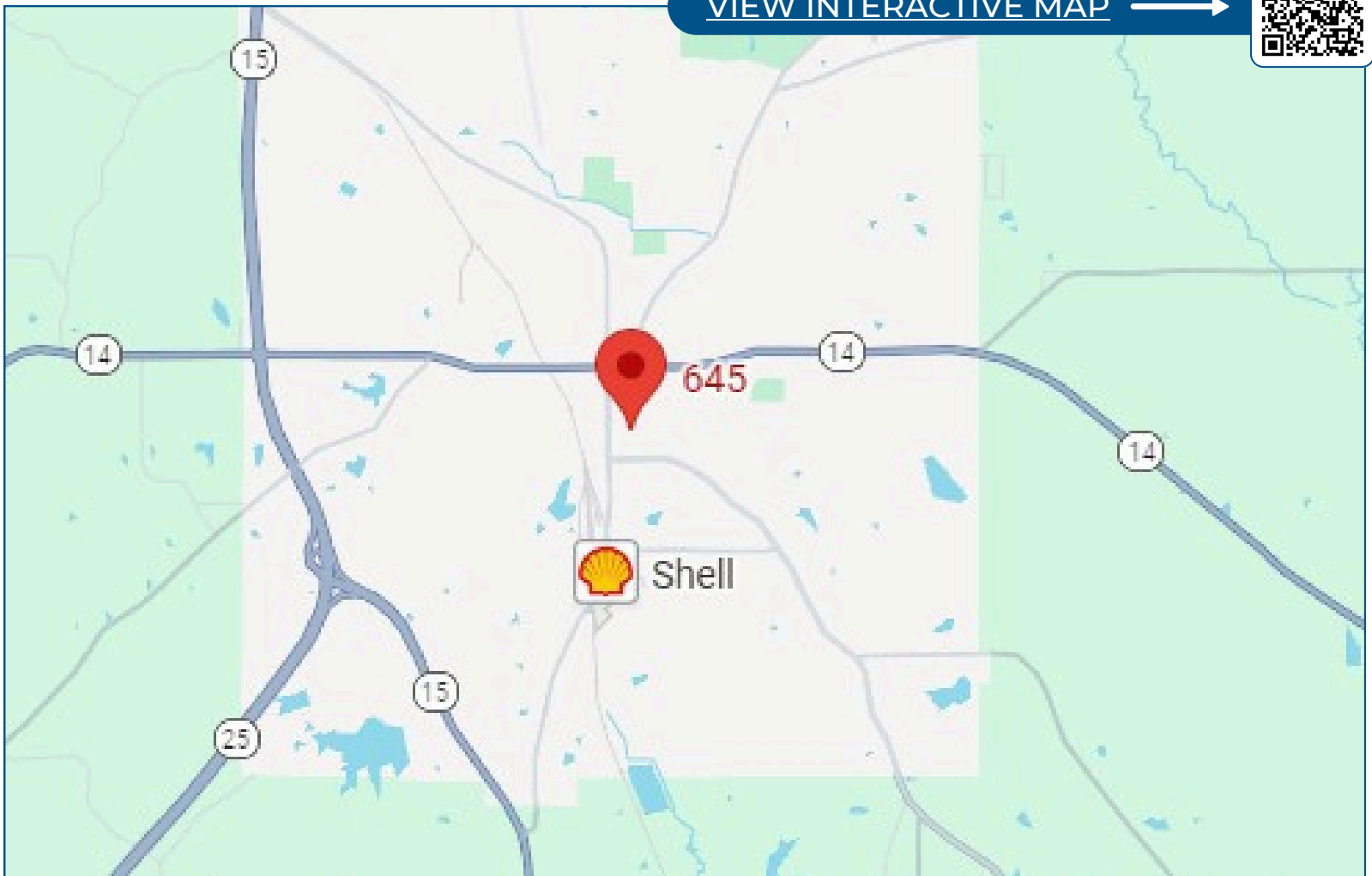
DHolland@TomSmithLand.com



Expect More. Get More.

Directional Map

[VIEW INTERACTIVE MAP](#) →



Directions from HWY 25 and 14 Intersection: Head east toward W Main St for 1.9 miles. Turn right onto S Columbus Ave and continue for 0.3 Miles. Continue for 3 blocks and the property will be on the right side of the road.

**DOYES
HOLLAND**
REALTOR®

Office: 662.268.6333
Cell: 662.312.2165

DHolland@TomSmithLand.com



Expect More. Get More.