



SMALLTOWN
HUNTING PROPERTIES
& REAL ESTATESM

A HOME ON 53.57± ACRES
COVINGTON COUNTY, AL
\$474,900

OFFICE (334) 931-0090 | WWW.SMALLTOWNPROPERTIES.COM

THE COVINGTON 53.57

PROPERTY PROFILE

LOCATION:

- 23826 Opine Road
Andalusia, AL 36421
- Covington County
- 2.6± Miles NW of Lake Frank
Jackson State Park
- 4.1± Miles NW of Downtown Opp
- 11.5± Miles E of Andalusia
- 81± Miles N of Destin, FL

COORDINATES:

- 31.3076, -86.3098

PROPERTY USE:

- Deer & Turkey Hunting
- Fishing
- Residential
- Recreational
- Mini-Farm

PROPERTY INFORMATION:

- 53.57± Total Acres
- 10± Acres of Pasture
- Ranch-Style Brick Home
- 3 Bedrooms/2 Bathroom
- Carport
- Pond
- Mature Timber
- 2 Entrances
- Pole Barn
- Shed
- Detached Carport
- Road Frontage
- Straughn School District

TAX INFORMATION:

- Parcel #s
 - 23 12 06 13 0 000 008.00
 - 23 12 06 24 0 000 004.00
- Taxes: TBD



SMALLTOWN
HUNTING PROPERTIES
& REAL ESTATESM

JASON PERDUE

LAND SPECIALIST

C: 334-304-2711

O: 334-535-0242

jperdue@smalltownproperties.com

215 E Sixth St. - Luverne, AL 36049

smalltownproperties.com

Information is believed to be accurate but not guaranteed.

WELCOME TO THE COVINGTON 53.57

WELCOME TO THE COVINGTON 53.57—OFFERING RECREATIONAL AND RESIDENTIAL OPPORTUNITIES. Situated just outside the city limits of Opp, Alabama, this 53.57± acre property features approximately 10 acres of open pastureland, mature timber, a scenic pond, and more. If you are looking for a peaceful property, this one is worth considering!

A ranch-style brick home, offering three bedrooms and two bathrooms, overlooks the pond, providing beautiful views. Other structures on the land include a pole barn, shed, and detached carport. Two entrances off Opine Road, along with ample frontage, make access easy. The rural property is conveniently located just over two miles from Lake Frank Jackson State Park, roughly four miles from downtown Opp, and about 81 miles north of Destin, Florida. The property is zoned in the Straughn School District.

The Covington 53.57 is perfect as a full-time homeplace or a recreational hunting retreat with plenty of space to roam.

**Contact Jason Perdue today to schedule a private tour
and make 23826 Opine Road your new address!**



SMALLTOWN
HUNTING PROPERTIES
& REAL ESTATESM

JASON PERDUE

LAND SPECIALIST

C: 334-304-2711

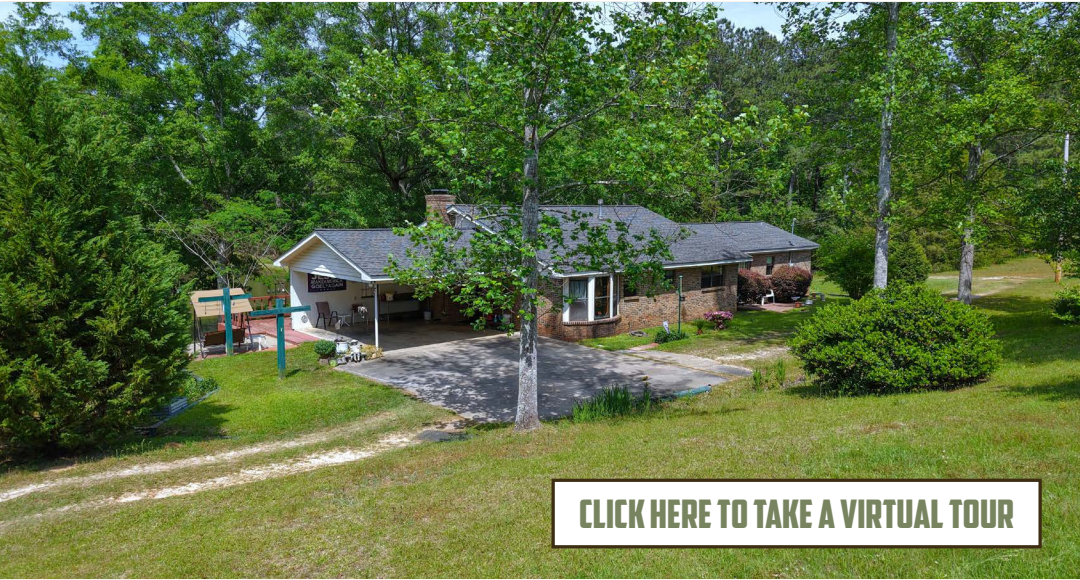
O: 334-535-0242

jperdue@smalltownproperties.com

215 E Sixth St. - Luverne, AL 36049

smalltownproperties.com

Information is believed to be accurate but not guaranteed.



CLICK HERE TO TAKE A VIRTUAL TOUR



SMALLTOWN
HUNTING PROPERTIES
& REAL ESTATESM

JASON PERDUE

LAND SPECIALIST

C: 334-304-2711

O: 334-535-0242

jperdue@smalltownproperties.com

215 E Sixth St. - Luverne, AL 36049

smalltownproperties.com

Information is believed to be accurate but not guaranteed.



SMALLTOWN

HUNTING PROPERTIES
& REAL ESTATESM

JASON PERDUE

LAND SPECIALIST

C: 334-304-2711

O: 334-535-0242

jperdue@smalltownproperties.com

215 E Sixth St. - Luverne, AL 36049

smalltownproperties.com

A HOME ON 53.57± ACRES 23826 OPINE ROAD COVINGTON COUNTY, ALABAMA



SMALLTOWN
HUNTING PROPERTIES
& REAL ESTATESM

JASON PERDUE

LAND SPECIALIST

C: 334-304-2711

O: 334-535-0242

jperdue@smalltownproperties.com

215 E Sixth St. - Luverne, AL 36049

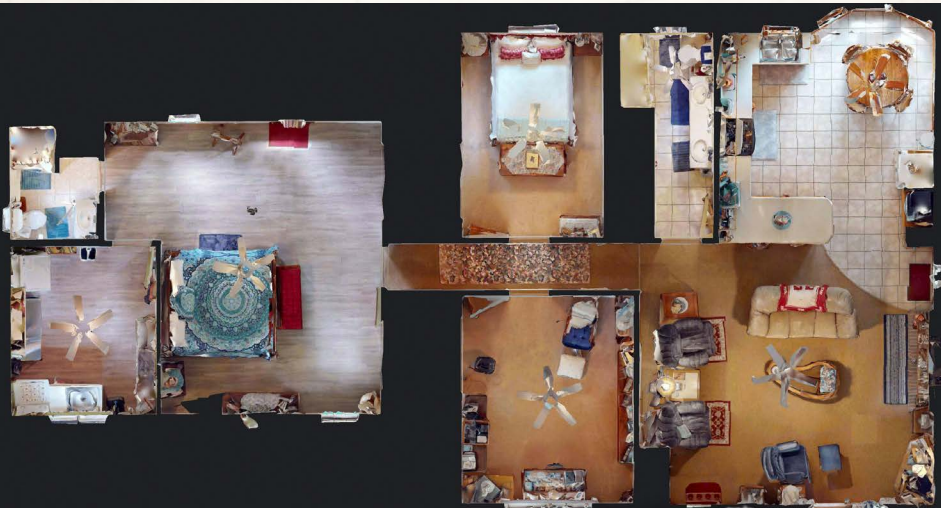
smalltownproperties.com

Information is believed to be accurate but not guaranteed.

A HOME ON 53.57± ACRES

23826 OPINE ROAD

COVINGTON COUNTY, ALABAMA



SMALLTOWN

HUNTING PROPERTIES
& REAL ESTATESM

JASON PERDUE

LAND SPECIALIST

C: 334-304-2711

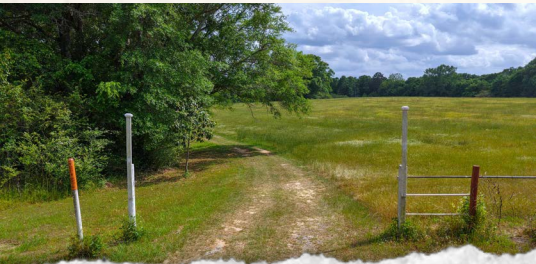
O: 334-535-0242

jperdue@smalltownproperties.com

215 E Sixth St. - Luverne, AL 36049

smalltownproperties.com

Information is believed to be accurate but not guaranteed.



SMALLTOWN

HUNTING PROPERTIES
& REAL ESTATESM

JASON PERDUE

LAND SPECIALIST

C: 334-304-2711

O: 334-535-0242

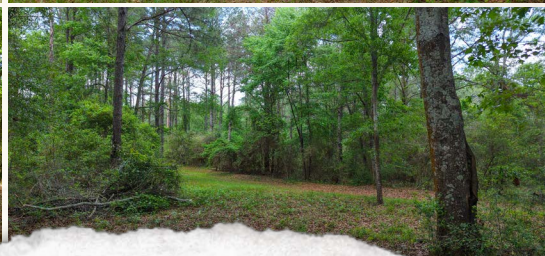
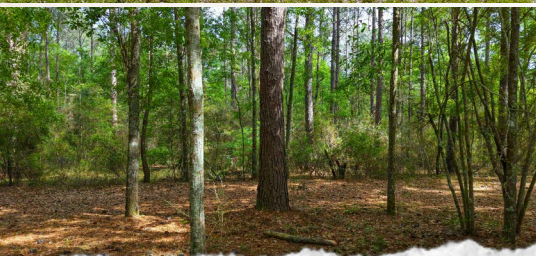
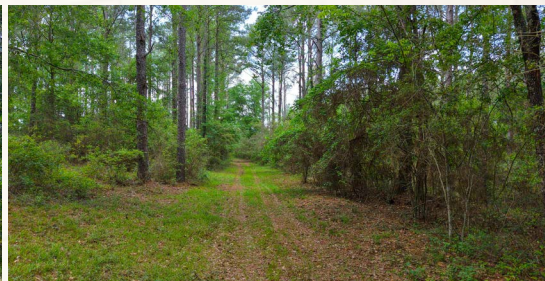
jperdue@smalltownproperties.com

215 E Sixth St. - Luverne, AL 36049

smalltownproperties.com

Information is believed to be accurate but not guaranteed.

A HOME ON 53.57± ACRES | 23826 OPINE ROAD | COVINGTON COUNTY, ALABAMA



SMALLTOWN

**HUNTING PROPERTIES
& REAL ESTATESM**

JASON PERDUE

LAND SPECIALIST

C: 334-304-2711

O: 334-535-0242

jperdue@smalltownproperties.com

215 E Sixth St. - Luverne, AL 36049

smalltownproperties.com

Information is believed to be accurate but not guaranteed.



Property Lines are Approximate



SMALLTOWN
HUNTING PROPERTIES
& REAL ESTATESM

JASON PERDUE

LAND SPECIALIST

C: 334-304-2711

O: 334-535-0242

jperdue@smalltownproperties.com

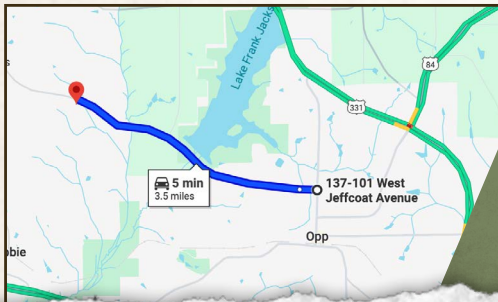
215 E Sixth St. - Luverne, AL 36049

smalltownproperties.com

Information is believed to be accurate but not guaranteed.

land id. LINK

TOPOGRAPHY MAP



Directions From Opp, AL: Travel 4 miles west on Opine Road. The property will be on the right.

[LINK TO GOOGLE MAP DIRECTIONS](#)



SMALLTOWN
HUNTING PROPERTIES
& REAL ESTATESM

JASON PERDUE

LAND SPECIALIST

C: 334-304-2711

O: 334-535-0242

jperdue@smalltownproperties.com

215 E Sixth St. - Luverne, AL 36049

smalltownproperties.com

Information is believed to be accurate but not guaranteed.