

Commercial Development Opportunity

1203 S. Chrisman Avenue
Cleveland, MS 38732



\$7,500



Property Information

Location:

- 1203 S. Chrisman Avenue,
Cleveland, MS 38732

Property Use:

- Commercial

Coordinates:

- 33.73255, -90.7187

Property Highlights

- 0.12± Acres
- Steady Traffic Flow



Expect More. Get More.

**DIAMOND
SPILLER**
REALTOR®

Office: 662.441.2500
Cell: 636.484.1985

Diamond@TomSmithLand.com

**A Real Estate Expert
You Can Trust!**



The Property

0.12± Acres

Positioned in a convenient spot in Cleveland, this prime commercial lot presents an exceptional opportunity for investors and developers seeking visibility, accessibility, and growth potential. Surrounded by established businesses and located near key thoroughfares, the site benefits from steady traffic flow and strong community presence. Whether envisioned for retail, office, or mixed-use development, this property offers the flexibility to bring a variety of concepts to life. With Cleveland's continued economic activity and small-town charm, this location is perfectly suited for a venture that aims to thrive in a connected and evolving market.



**DIAMOND
SPILLER**
REALTOR®

Office: 662.441.2500

Cell: 636.484.1985

Diamond@TomSmithLand.com

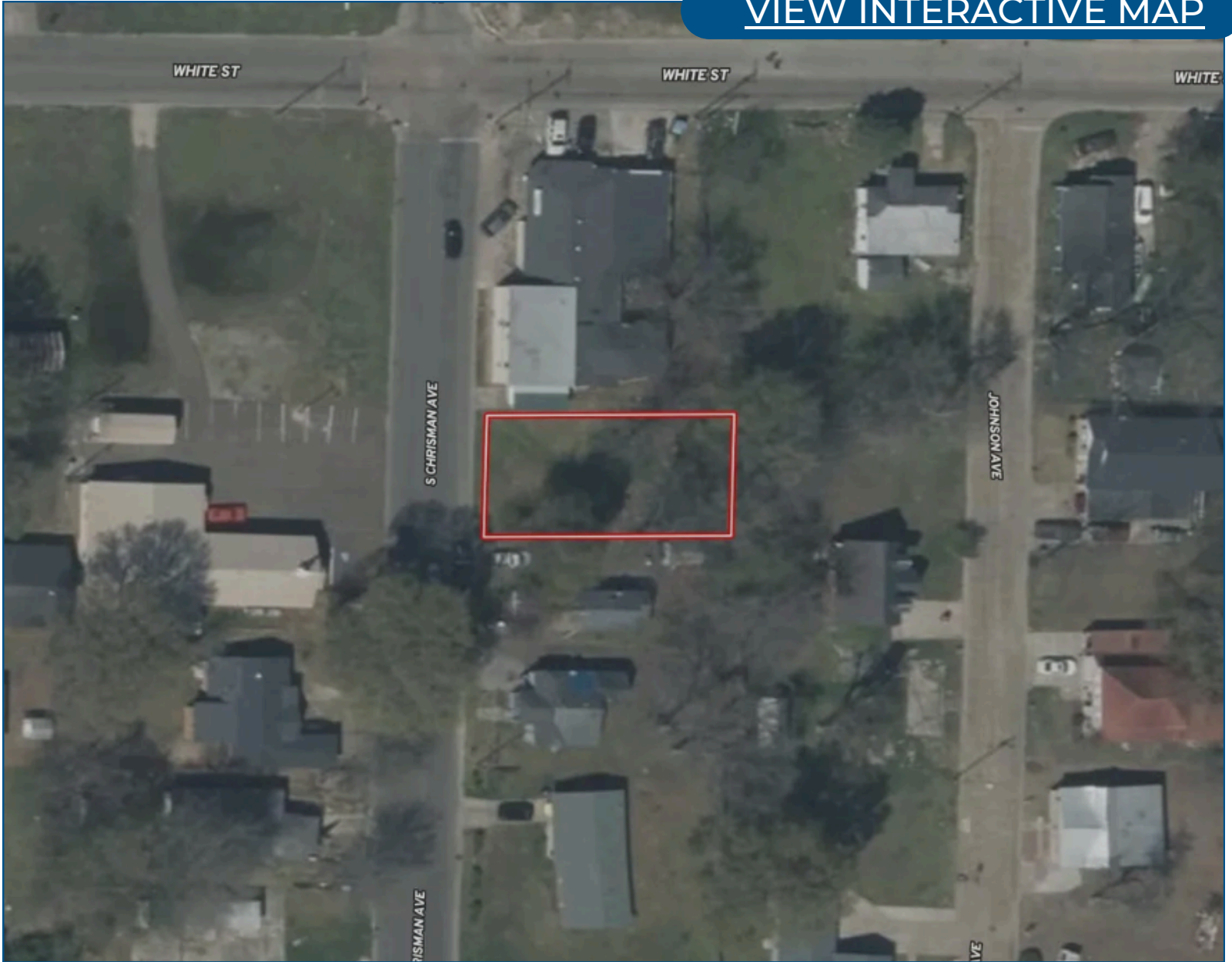


TomSmithLandandHomes.com

Information is believed to be accurate but not guaranteed.

Aerial Map

[VIEW INTERACTIVE MAP](#)



**DIAMOND
SPILLER**

REALTOR®

Office: 662.441.2500

Cell: 636.484.1985

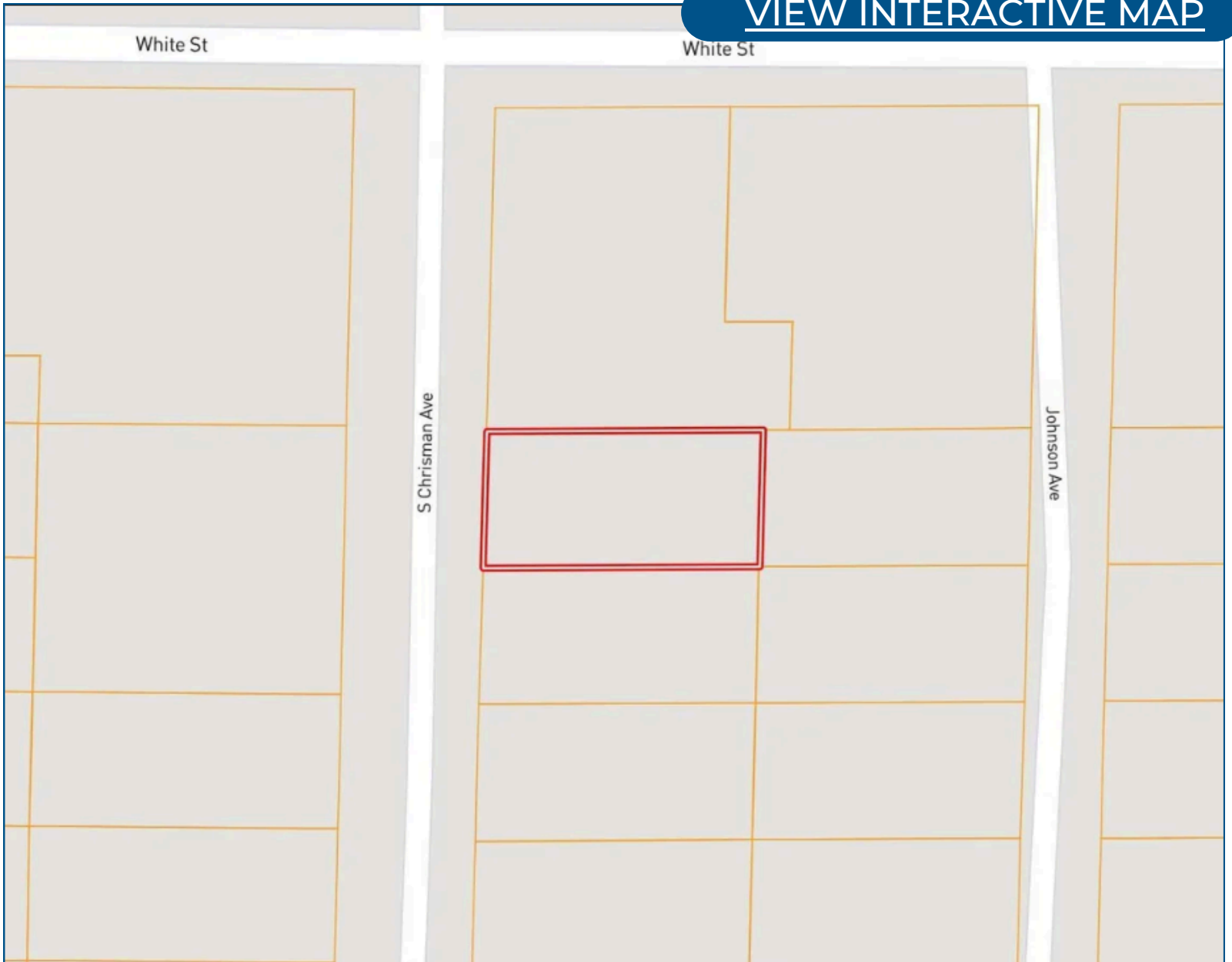
Diamond@TomSmithLand.com



Expect More. Get More.

Ownership Map

[VIEW INTERACTIVE MAP](#)



**DIAMOND
SPILLER**

REALTOR®

Office: 662.441.2500

Cell: 636.484.1985

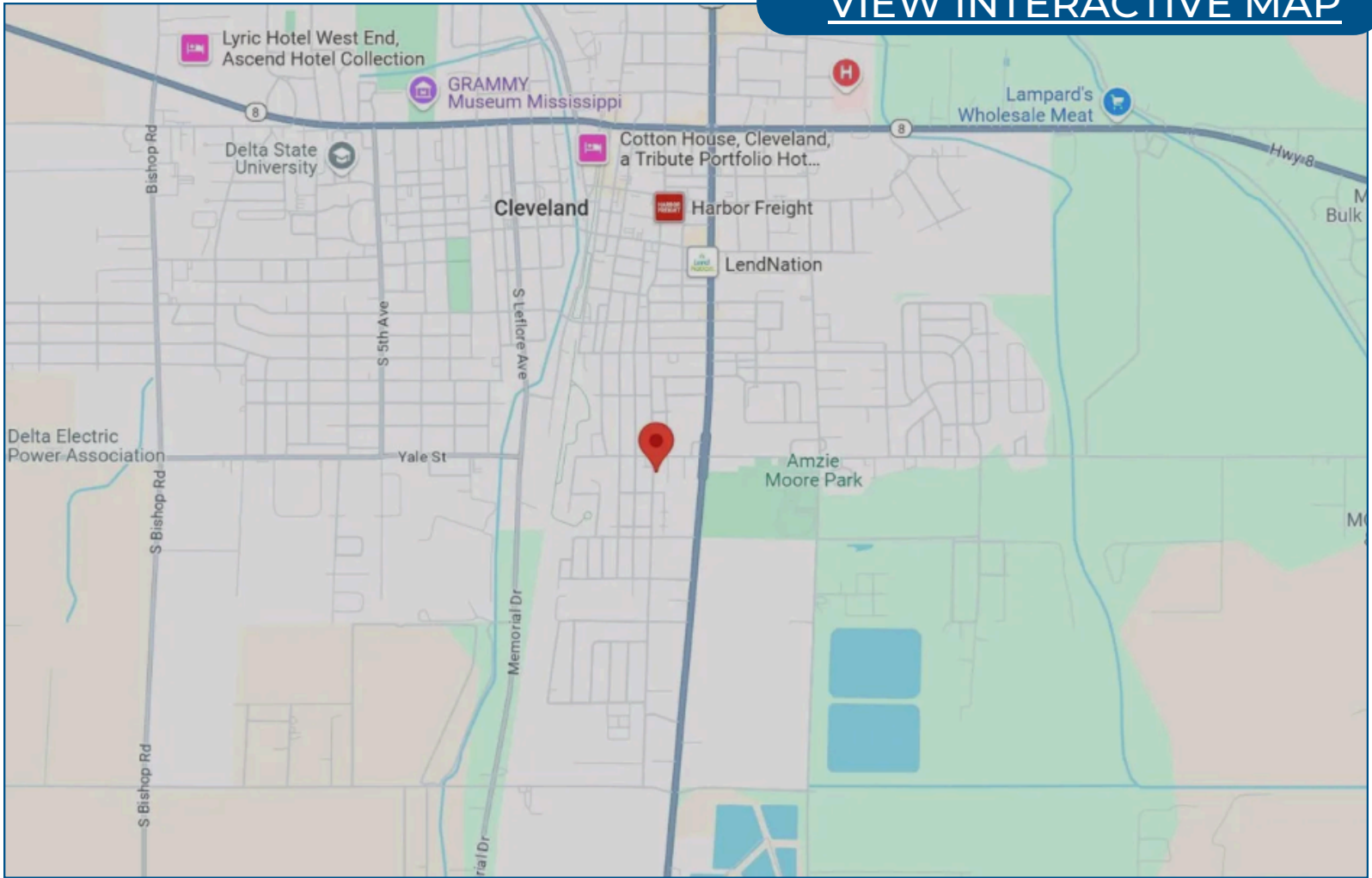
Diamond@TomSmithLand.com



Expect More. Get More.

Directional Map

[VIEW INTERACTIVE MAP](#)



Directions from Hwy 8 & Hwy 61 in Cleveland:

Travel south on Hwy 61 for 1 mile. Turn right on White Street. After 217 feet, the property will be on the left.

**DIAMOND
SPILLER**
REALTOR®

Office: 662.441.2500
Cell: 636.484.1985

Diamond@TomSmithLand.com



Listing Agent



Diamond Spiller
REALTOR

Diamond Spiller, a proud native of Cleveland, MS, is a dedicated real estate agent with a keen eye for design and a deep passion for helping others achieve their home ownership dreams. With an MBA and a broad range of expertise, Diamond is equipped to offer strategic insights and innovative solutions that consistently exceed her clients' expectations.

Her commitment to excellence and personalized approach ensures that every client receives exceptional service throughout the process. Outside of her professional life, Diamond enjoys traveling, exploring new cultures, and spending quality time with her loved ones, always seeking new experiences to enrich her life and career.

OFFICE: 662.441.2500

CELL: 636.484.1985

Diamond@TomSmithLand.com

**CALL DIAMOND
TODAY!**

