



**Fountains
Land**
AN F&W COMPANY

**Price
Improvement**



Trinity Lady Park Tracts

A first-time open listing of historic timberland property.

Tract #1

 294 Acres

 \$1,380,055

Tract #2

 256 Acres

 \$1,259,915

Tract #3

 332 Acres

 \$1,616,562

Tract #4

 401 Acres

 \$2,208,827

Tract #5

 304 Acres

 \$1,509,729

The Trinity Lady Park Tracts, situated in East Texas, consist of five individual parcels available for purchase separately or in any combination. The tracts range in size from 256 to 401 acres. Each parcel features intensively managed timberland, presenting an excellent opportunity for timber investment, recreational pursuits, or establishing a homestead.



Chris Bartley, ACF, TAF | Real Estate Agent

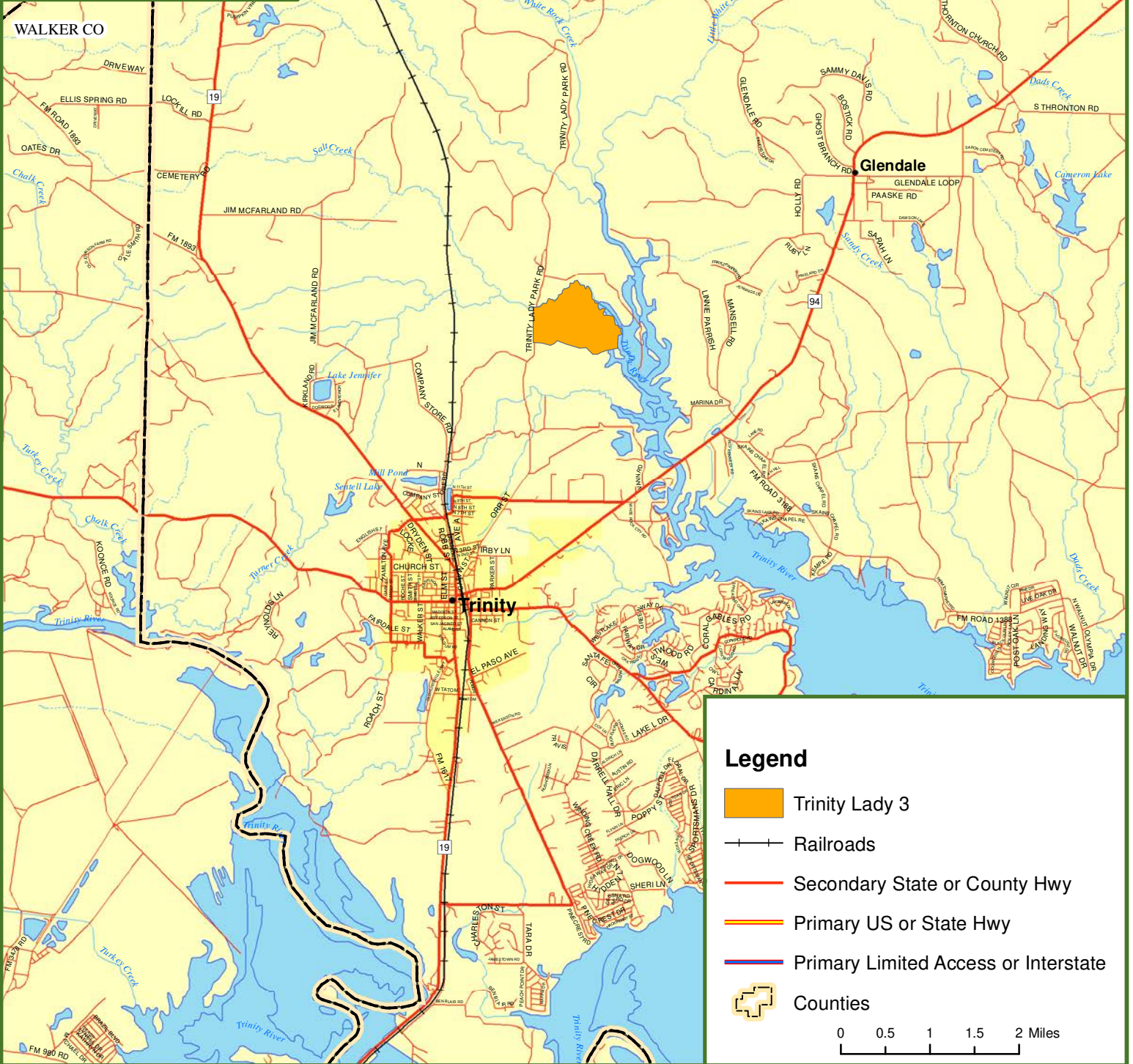
(936) 662-2444 | cbartley@fwforestry.com

1204 Sam Houston Ave STE 8 | Huntsville, TX 77340

www.fountainsland.com



Locus Map Trinity Lady 3 Trinity County, TX 332.00 ± Acres

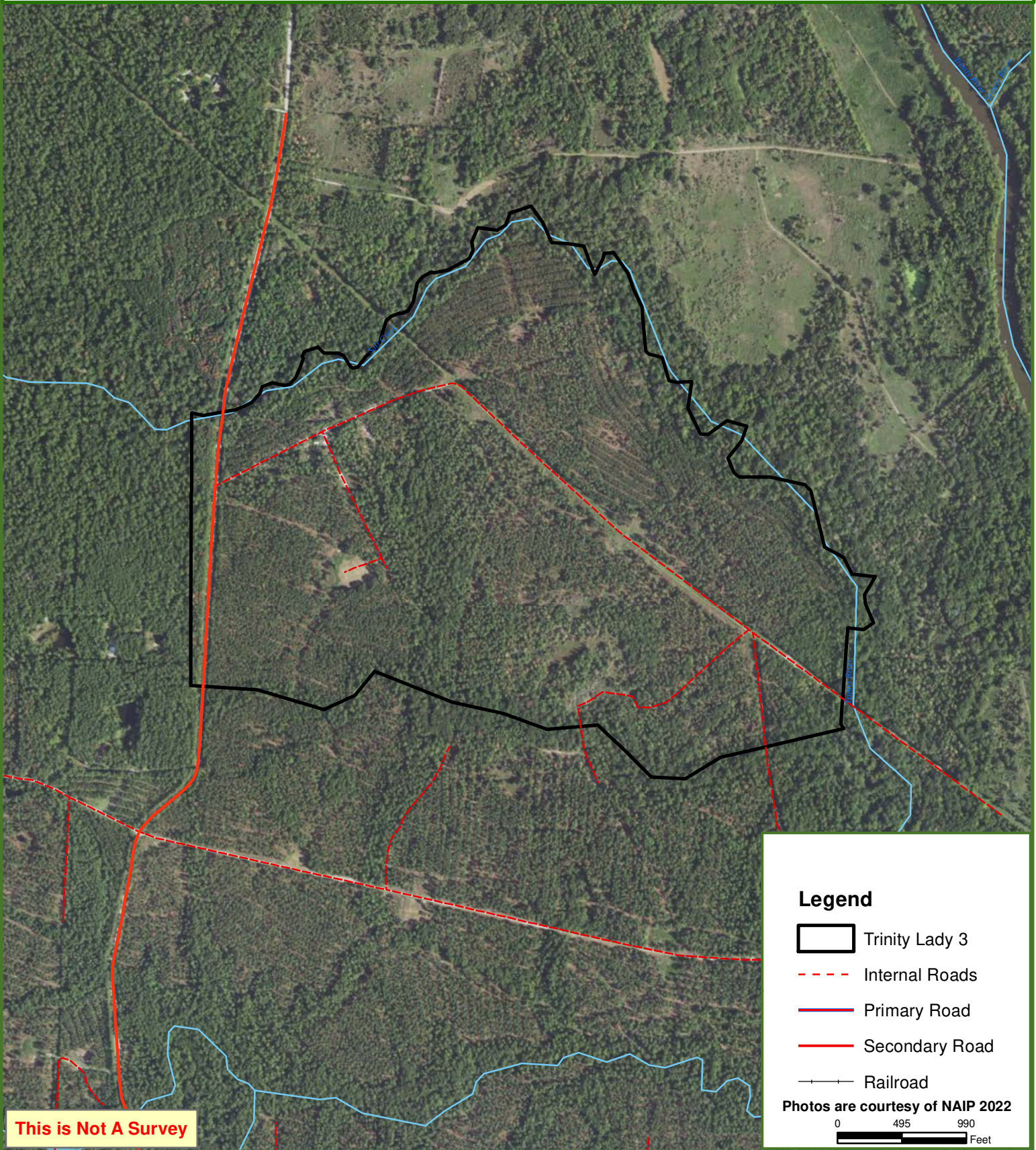




Trinity Lady 3

Trinity County, TX

332.00 ± Acres



This is Not A Survey

Legend

- Trinity Lady 3
- Internal Roads
- Primary Road
- Secondary Road
- Railroad

Photos are courtesy of NAIP 2022

0 495 990
Feet

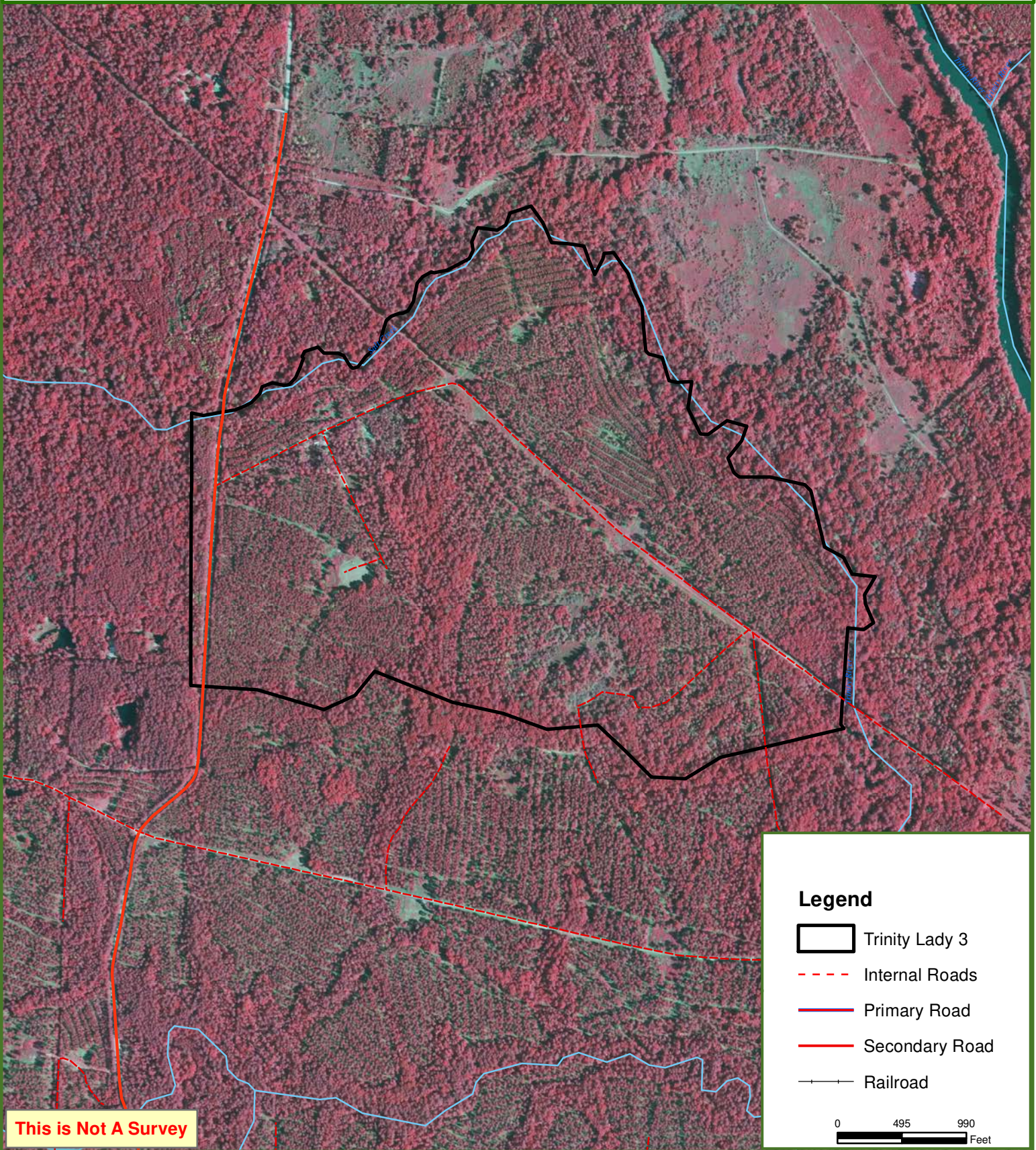
This map was produced from information supplied by the seller and the use of aerial photography. The boundary lines portrayed on this map are approximate and could be different than the actual location of the boundaries found in the field.








Trinity Lady 3

Trinity County, TX

332.00 ± Acres



Legend

-  Trinity Lady 3
-  Internal Roads
-  Primary Road
-  Secondary Road
-  Railroad

0 495 990
Feet

This is Not A Survey

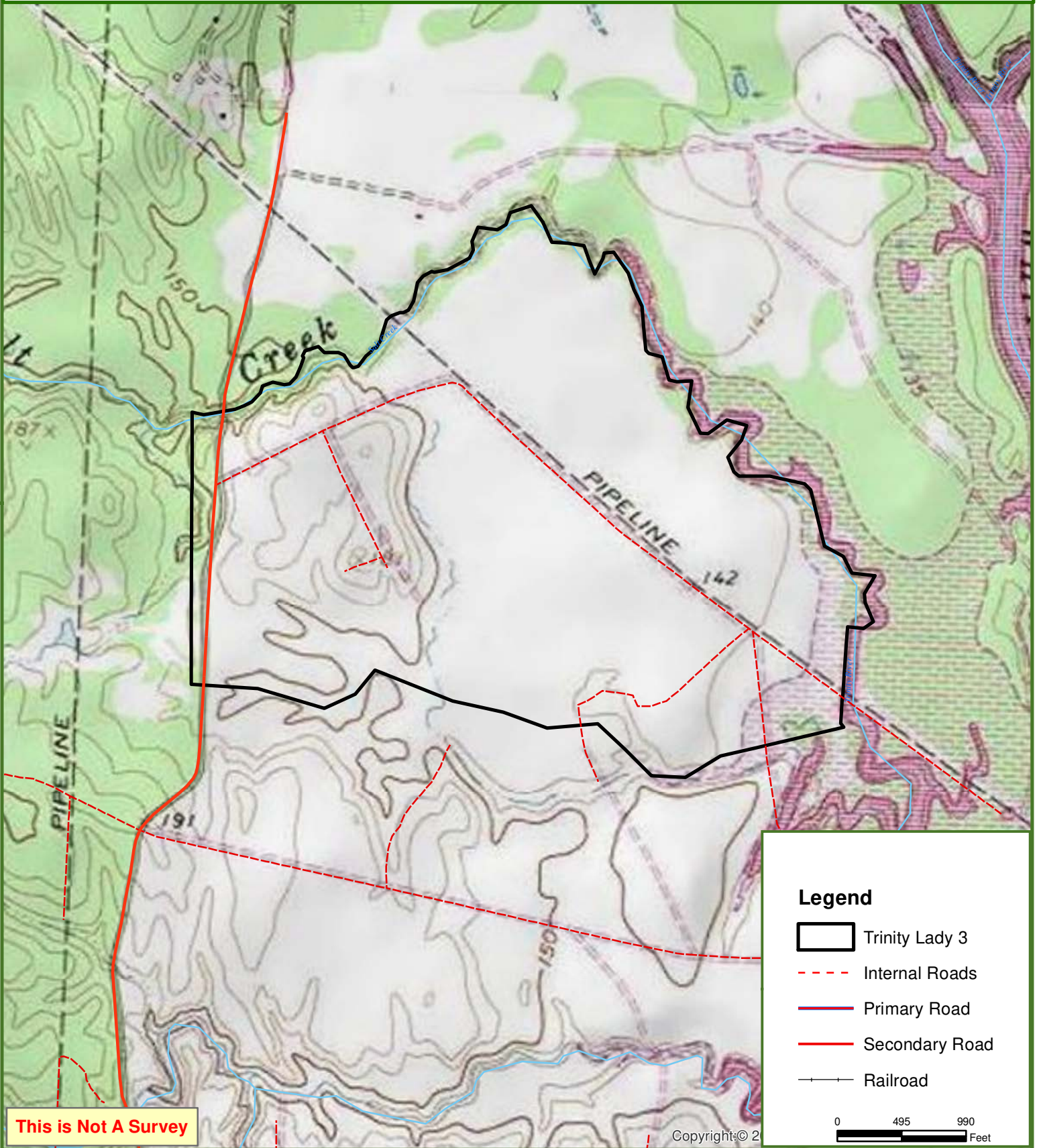
This map was produced from information supplied by the seller and the use of aerial photography. The boundary lines portrayed on this map are approximate and could be different than the actual location of the boundaries found in the field.



Trinity Lady 3

Trinity County, TX

332.00 ± Acres



This is Not A Survey

This map was produced from information supplied by the seller and the use of aerial photography. The boundary lines portrayed on this map are approximate and could be different than the actual location of the boundaries found in the field.