

1.1± ACRES
LEFLORE COUNTY, MS
\$85,000



SMALLTOWN
HUNTING PROPERTIES
& REAL ESTATESM

OFFICE (662) 846-1425

THE LEFLORE 1.1

PROPERTY PROFILE

LOCATION:

- Leflore County, MS
- Frontage on the Yalobusha River
- Frontage on County Road 150

COORDINATES:

- 33.55402, -90.1819

PROPERTY INFORMATION:

- Dead End Road
- River Access
- Hardwood Trees
- Utilities Available

PROPERTY USE:

- Residential



SMALLTOWN
HUNTING PROPERTIES
& REAL ESTATESM

WILSON BRITT

LAND SPECIALIST

C: 662-299-2367

O: 662-846-1425

wilson@smalltownproperties.com

701 W. Sunflower Rd - Cleveland, MS 38732

smalltownproperties.com

Information is believed to be accurate but not guaranteed.

WELCOME TO THE LEFLORE 1.1

ARE YOU LOOKING FOR A PLACE TO BUILD THE HOME OF YOUR DREAMS? This Leflore County 1.1± acre lot may be the one for you! Established just outside the city limits of Greenwood, MS, on the river, is an up-and-coming residential development. With this location, you won't have to sacrifice convenience for country living! This lot is located on Point Leflore (also known as Three Point), where the Tallahatchie and Yalobusha Rivers meet to create the Yazoo River. Coupled with the extensive hardwood trees and situated on a dead-end road, you are granted seclusion and beauty.

The Tallahatchie Bridge takes you directly to Grand Boulevard, Greenwood's most quaint street. This lot is just minutes away from Highway 82 and downtown Greenwood and less than one mile from Money Road. Whatever your goals, this is an ideal spot in the Mississippi Delta.

For additional information and to schedule a showing, call Wilson Britt today!



SMALLTOWN
HUNTING PROPERTIES
& REAL ESTATESM

WILSON BRITT

LAND SPECIALIST

C: 662-299-2367

O: 662-846-1425

wilson@smalltownproperties.com

701 W. Sunflower Rd - Cleveland, MS 38732

smalltownproperties.com

Information is believed to be accurate but not guaranteed.

1.1 ± ACRES

LEFLORE COUNTY, MISSISSIPPI



SMALLTOWN

HUNTING PROPERTIES
& REAL ESTATESM

WILSON BRITT

LAND SPECIALIST

C: 662-299-2367

O: 662-846-1425

wilson@smalltownproperties.com

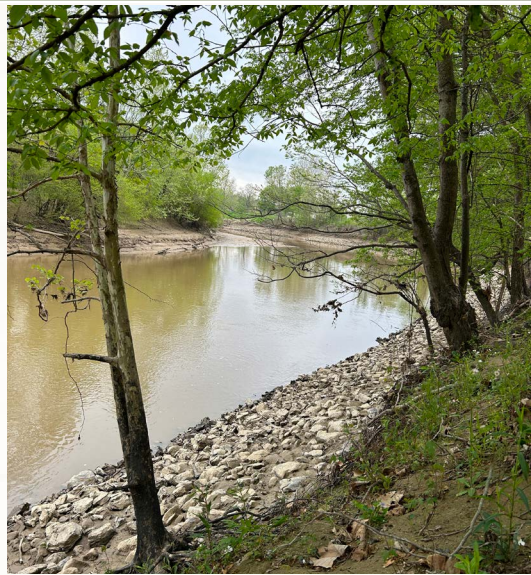
701 W. Sunflower Rd - Cleveland, MS 38732

smalltownproperties.com

Information is believed to be accurate but not guaranteed.

1.1 ± ACRES

LEFLORE COUNTY, MISSISSIPPI



SMALLTOWN
HUNTING PROPERTIES
& REAL ESTATESM

WILSON BRITT

LAND SPECIALIST

C: 662-299-2367

O: 662-846-1425

wilson@smalltownproperties.com

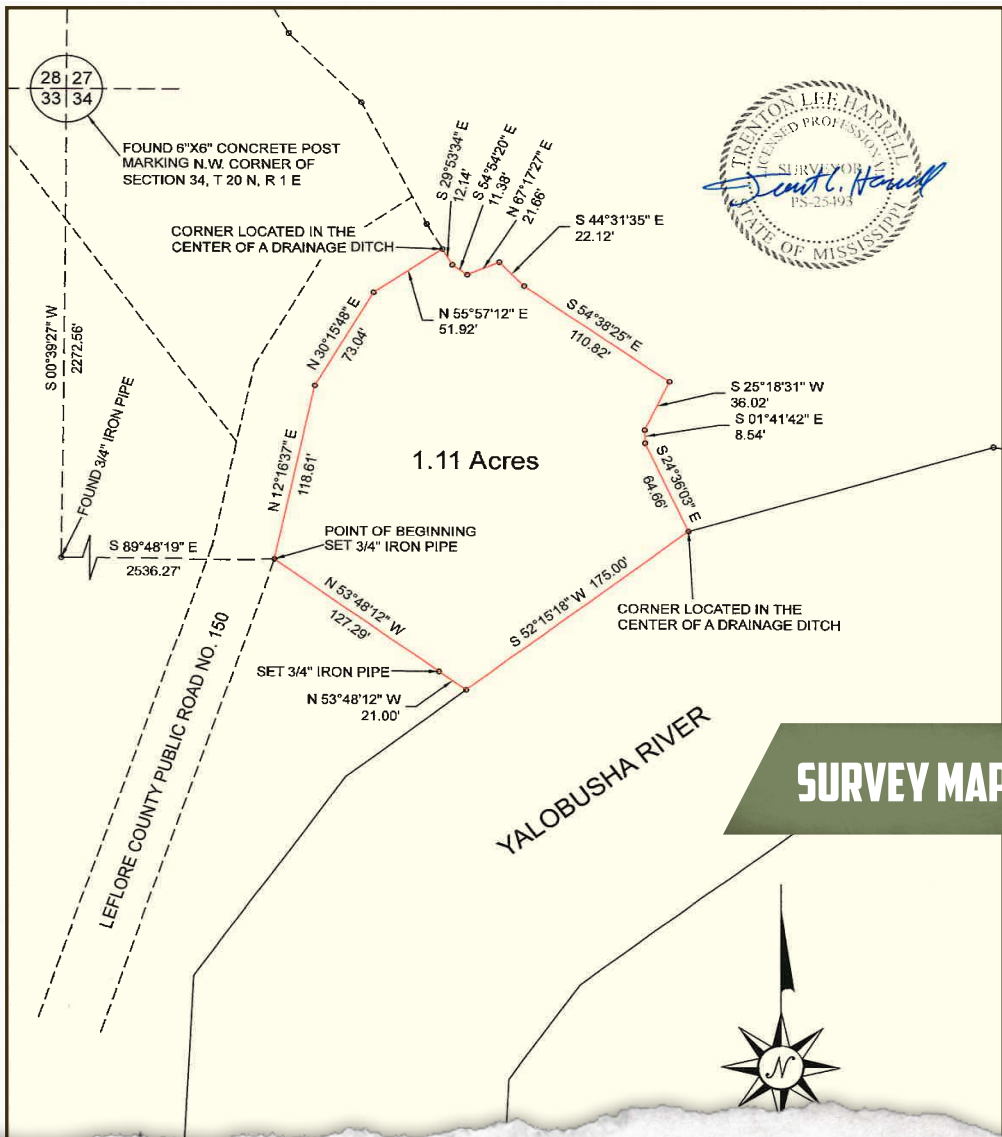
701 W. Sunflower Rd - Cleveland, MS 38732

smalltownproperties.com

Information is believed to be accurate but not guaranteed.

1.1 ± ACRES

LEFLORE COUNTY, MISSISSIPPI



SMALLTOWN
HUNTING PROPERTIES
& REAL ESTATESM

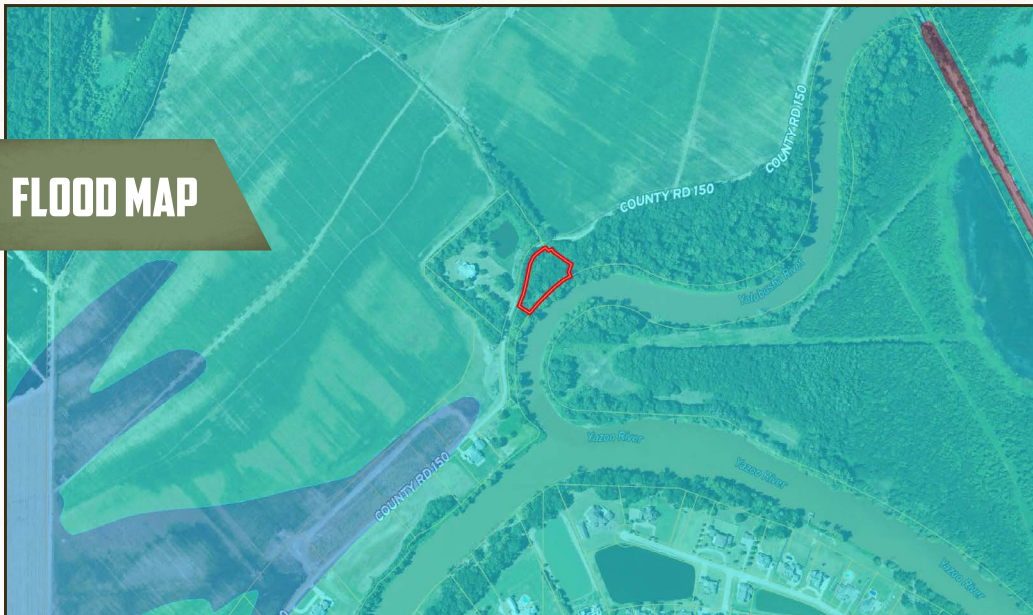
WILSON BRITT
LAND SPECIALIST
C: 662-299-2367
O: 662-846-1425
wilson@smalltownproperties.com
701 W. Sunflower Rd - Cleveland, MS 38732
smalltownproperties.com

Information is believed to be accurate but not guaranteed.

1.1 ± ACRES

LEFLORE COUNTY, MISSISSIPPI

FLOOD MAP



SMALLTOWN

HUNTING PROPERTIES
& REAL ESTATESM

WILSON BRITT

LAND SPECIALIST

C: 662-299-2367

O: 662-846-1425

wilson@smalltownproperties.com

701 W. Sunflower Rd - Cleveland, MS 38732

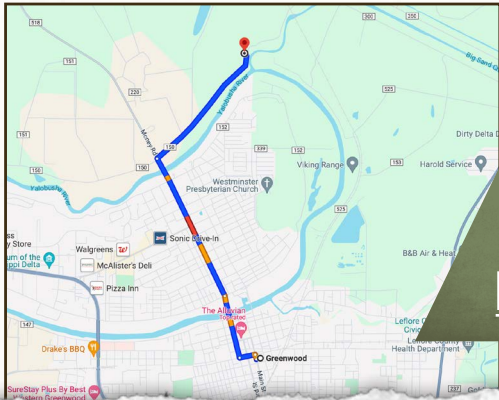
smalltownproperties.com

Information is believed to be accurate but not guaranteed.

1.1 ± ACRES

LEFLORE COUNTY, MISSISSIPPI

land id. LINK



Directions from Greenwood, MS:
 Proceed north on Grand Boulevard
 and cross the Tallahatchie Bridge. Take
 an immediate right off Money Road
 and drive 1.2 miles. The destination is on
 your right.

LINK TO GOOGLE MAP DIRECTIONS



SMALLTOWN
 HUNTING PROPERTIES
 & REAL ESTATESM

WILSON BRITT
 LAND SPECIALIST
 C: 662-299-2367
 O: 662-846-1425
 wilson@smalltownproperties.com
 701 W. Sunflower Rd - Cleveland, MS 38732
 smalltownproperties.com

Information is believed to be accurate but not guaranteed.