

# Jupiter 640 Acre Recreational Tract

St Hwy 711, Jupiter, Florida 33478

---

Bo Jahna  
863-557-0320  
bo@saundersrealestate.com



**Sale Price**

**\$7,900,000**

**Offering Summary**

**Acreage:** 640 Acres  
**Price / Acre:** \$12,344  
**State:** Florida  
**City:** Jupiter  
**County:** Martin County  
**Property Type:** Hunting and Recreational Land, Mitigation  
**Video:** [View Here](#)

**Property Overview**

For the first time in over 20 years, this beautiful 640-acre tract in Jupiter, Florida, is available to purchase.

Jupiter Recreational Tract borders the 17,000-acre Jones Hungryland Wildlife Management Area making this property a sportsman's paradise. Excellent hunting, fishing, and wildlife viewing opportunities benefit from the shared, unobstructed border with Jones Hungryland Wildlife Management Area. The undisturbed Florida habitat supports a healthy population of whitetail deer, Osceola turkeys, and waterfowl. Many dirt roads and ATV trails provide easy access to the sprawling pine and cypress throughout the tract. A conservation easement currently encumbers the majority of the property, with approximately 2 acres remaining unencumbered for a potential homesite. The easement removal is currently pending. Located just 30 minutes from beautiful beaches, world-class marinas, and popular dining, this property is in a perfect location to enjoy the great outdoors.

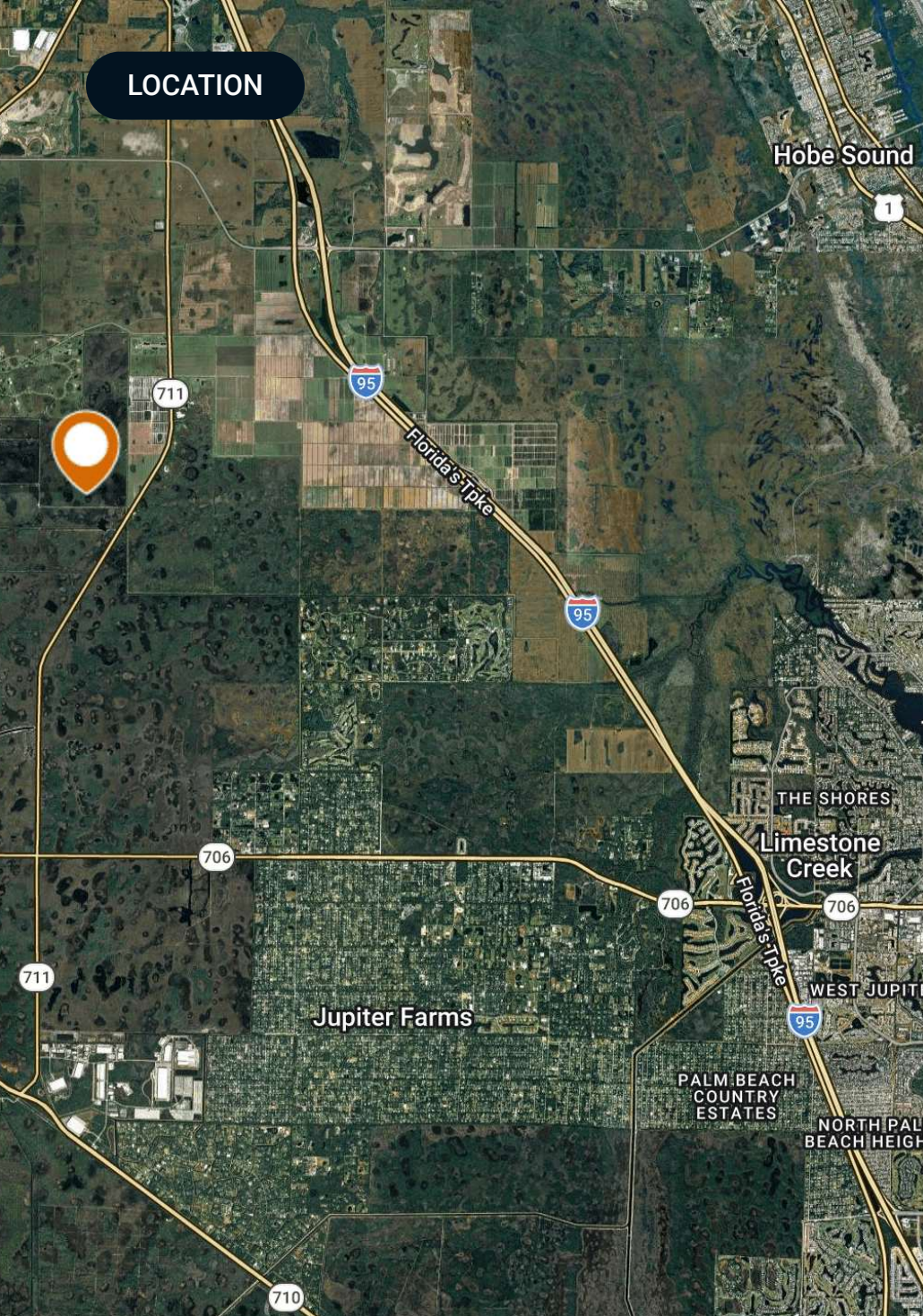
## SPECIFICATIONS & FEATURES



## Specifications & Features

<b>Uplands / Wetlands:</b>	181 ± uplands, 460 ± wetlands
<b>Soil Types:</b>	Oldsmar Fine Sand - 12.01 AC Wabasso Sand - 184.04 AC Pineda And Riviera Fine Sands - 232.88 AC Hallandale Sand - 4.3 AC Pinellas Fine Sand - 12.15 AC Riviera Fine Sand - 196.53 AC
<b>Taxes &amp; Tax Year:</b>	2025 - \$21,439.47
<b>Zoning / FLU:</b>	Ag-20
<b>Water Source &amp; Utilities:</b>	N/A
<b>Road Frontage:</b>	550 ± FT from Pratt Whitney
<b>Nearest Point of Interest:</b>	15 minutes to I-95 in Jupiter 15 minutes to Hobe Sound 20 Minutes to Jupiter Island 20 minutes to Downtown Jupiter 20 minutes to Palm Beach Gardens 25 minutes to Downtown Stuart 35 minutes to Downtown West Palm Beach 35 minutes to West Palm Beach Airport
<b>Current Use:</b>	Recreation land Long Term Investment Wetland Mitigation Bank
<b>Potential Recreational / Alt Uses:</b>	ATV Riding Horseback Riding Shooting Club Hunting Wetland mitigation bank
<b>Structures &amp; Year Built:</b>	N/A

## LOCATION



## Location & Driving Directions

Parcel: 07-40-41-000-000-00010-3

GPS: 27.0101849, -80.2786105

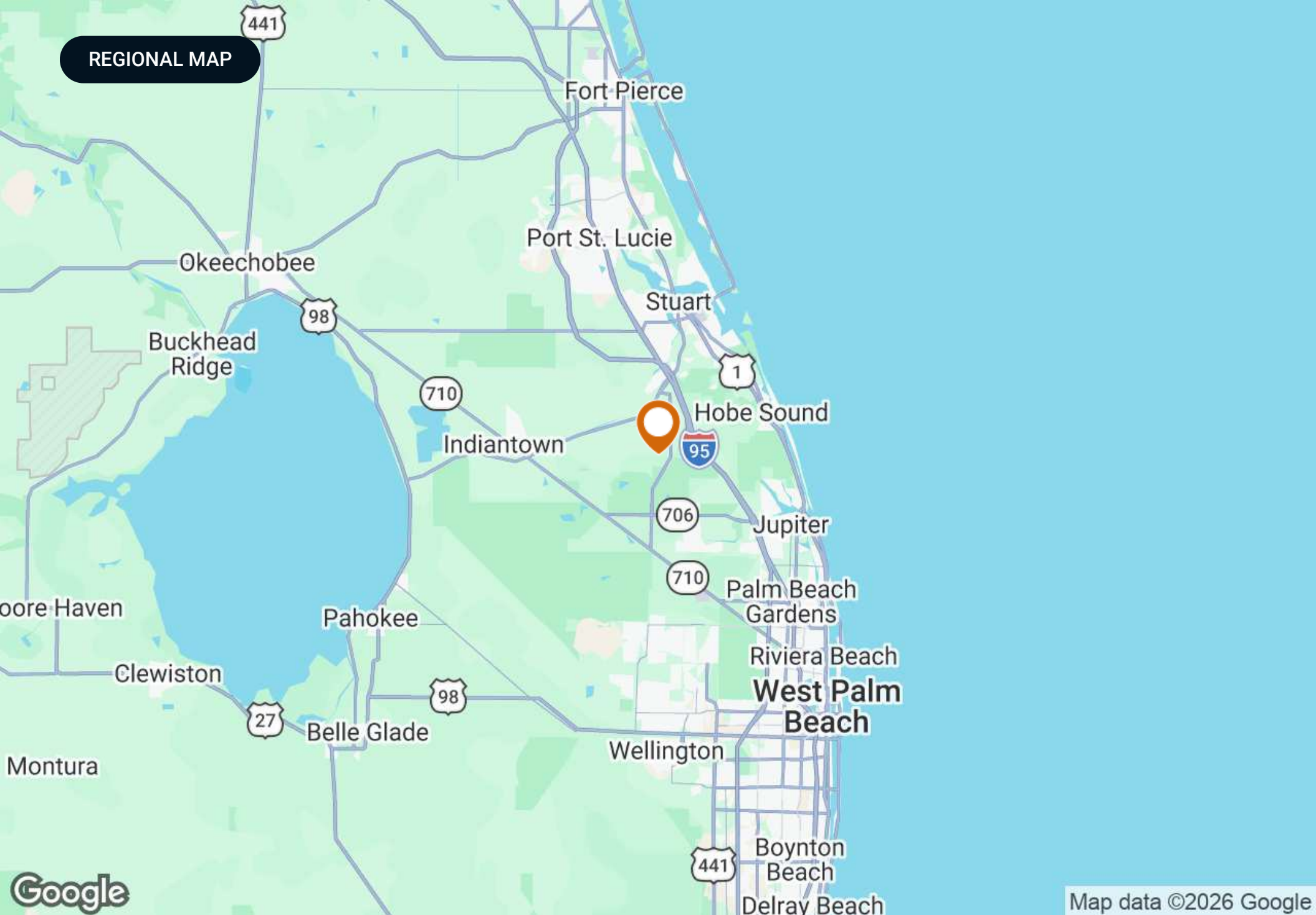
### Driving Directions:

- From I-95 Indiantown Exit: Head West on Indiantown Road (FL - 706 W) or 13.2 miles, turn right, and head North on State Highway 711 or 4.2 miles
- The property's entrance will be on the left-hand side of the road.

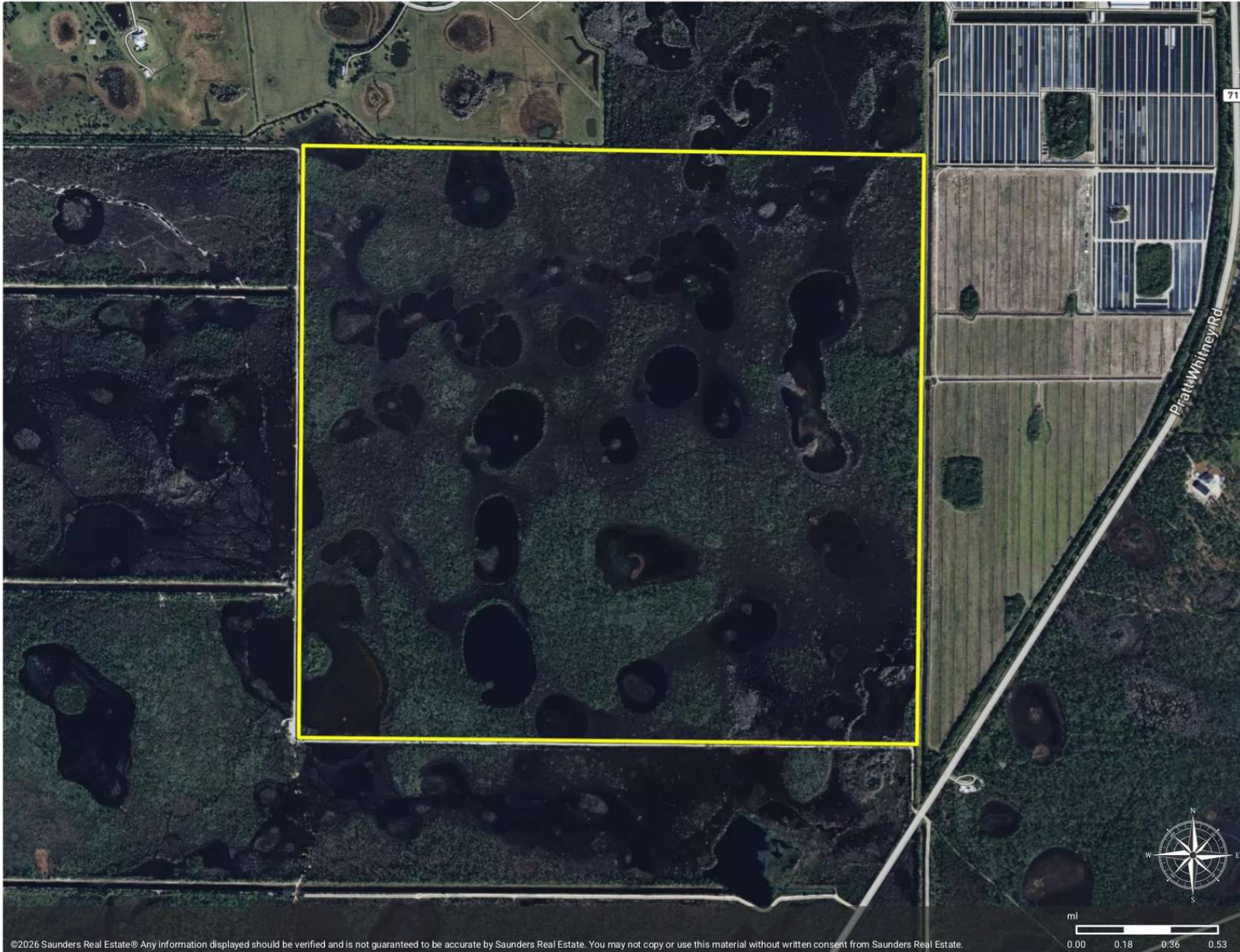
### Showing Instructions:

Call Bo Jahna - 863-557-0320

REGIONAL MAP



# PROPERTY OUTLINE



## Jupiter 640 Acre Recreational Tract

■ Polygon



©2026 Saunders Real Estate® Any information displayed should be verified and is not guaranteed to be accurate by Saunders Real Estate. You may not copy or use this material without written consent from Saunders Real Estate.







ADDITIONAL PHOTOS



ADDITIONAL PHOTOS



ADDITIONAL PHOTOS



## ADVISOR BIOGRAPHY



### Bo Jahna

Senior Advisor

bo@saundersrealestate.com

Direct: **877-518-5263 x366** | Cell: **863-557-0320**

## Professional Background

Bo Jahna is an Senior Advisor at Saunders Real Estate.

Bo is a licensed real estate associate located in Jupiter, Florida. His main focus is transitioning raw land into residential development properties along the east coast of Florida. Bo also specializes in mining and agricultural properties.

He is a 4th generation Floridian and landowner who comes from a family with long-time ties to Polk County and the mining industry.

Bo received his bachelor's degree in Business Administration from the University of Central Florida and his MBA with a finance specialization from the Huizenga School of Business at Nova Southeastern University. He also holds a certification for pricing analytics from Columbia University.

Previously, Bo was the CFO of a manufacturing company in Miami. After the sale of the company, his love of Florida land drew him to agricultural real estate

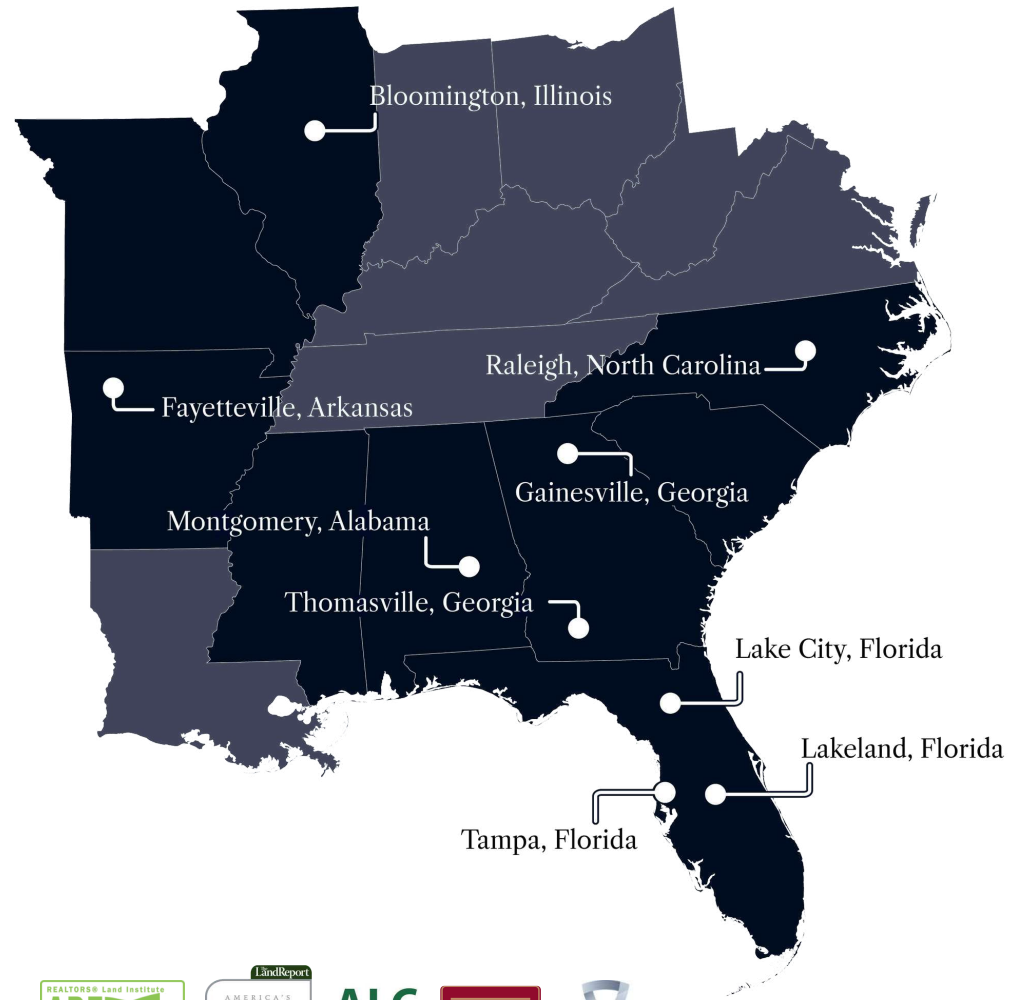
Bo's personal interests include traveling with family, hiking with his dogs, fishing and reading.

Bo specializes in:

- Residential Development
- Mining Properties
- Agricultural Land
- Ranchland
- Recreational Land



At Saunders Real Estate, we deliver full-service real estate solutions, built on more than 30 years of trusted experience. Our dedicated teams offer tailored guidance backed by deep regional insight and a proven track record. We believe that successful outcomes start with strong relationships built on trust and a shared commitment to your goals.



877-518-5263 • [info@saundersrealestate.com](mailto:info@saundersrealestate.com)



©2026 Saunders Real Estate, LLC. All rights reserved. The information contained in this communication is strictly confidential. This information has been obtained from sources believed to be reliable but has not been verified. NO WARRANTY OR REPRESENTATION, EXPRESS OR IMPLIED, IS MADE AS TO THE CONDITION OF THE PROPERTY (OR PROPERTIES) REFERENCED HEREIN OR AS TO THE ACCURACY OR COMPLETENESS OF THE INFORMATION CONTAINED HEREIN, AND SAME IS SUBMITTED SUBJECT TO ERRORS, OMISSIONS, CHANGE OF PRICE, RENTAL OR OTHER CONDITIONS, WITHDRAWAL WITHOUT NOTICE, AND TO ANY SPECIAL LISTING CONDITIONS IMPOSED BY THE PROPERTY OWNER(S). ANY PROJECTIONS, OPINIONS OR ESTIMATES ARE SUBJECT TO UNCERTAINTY AND DO NOT SIGNIFY CURRENT OR FUTURE PROPERTY PERFORMANCE.